

Amphiphysin I Polyclonal Antibody
Catalog # AP68397**Specification**

Amphiphysin I Polyclonal Antibody - Product Information

Application	WB
Primary Accession	P49418
Reactivity	Human, Mouse, Rat
Host	Rabbit
Clonality	Polyclonal

Amphiphysin I Polyclonal Antibody - Additional Information**Gene ID** 273**Other Names**

AMPH; AMPH1; Amphiphysin

Dilution

WB~~Western Blot: 1/500 - 1/2000. ELISA: 1/20000. Not yet tested in other applications.

Format

Liquid in PBS containing 50% glycerol, 0.5% BSA and 0.09% (W/V) sodium azide.

Storage Conditions

-20°C

Amphiphysin I Polyclonal Antibody - Protein Information**Name** AMPH**Synonyms** AMPH1**Function**

May participate in mechanisms of regulated exocytosis in synapses and certain endocrine cell types. May control the properties of the membrane associated cytoskeleton.

Cellular Location

Cytoplasmic vesicle, secretory vesicle, synaptic vesicle membrane; Peripheral membrane protein; Cytoplasmic side Cytoplasm, cytoskeleton

Tissue Location

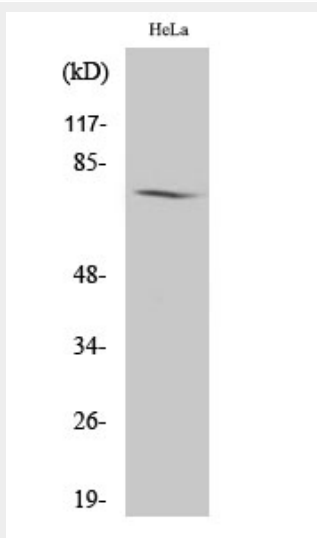
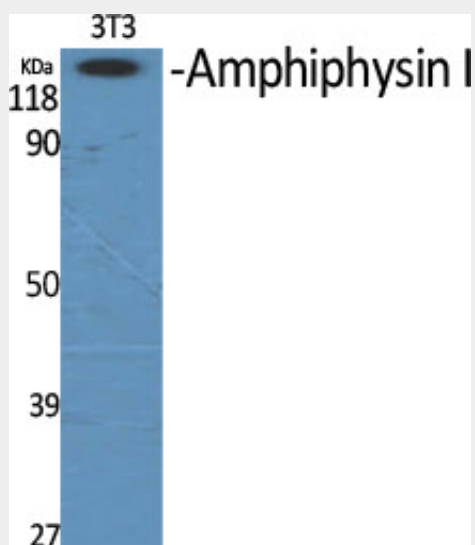
Neurons, certain endocrine cell types and spermatocytes

Amphiphysin I Polyclonal Antibody - Protocols

Provided below are standard protocols that you may find useful for product applications.

- [Western Blot](#)
- [Blocking Peptides](#)
- [Dot Blot](#)
- [Immunohistochemistry](#)
- [Immunofluorescence](#)
- [Immunoprecipitation](#)
- [Flow Cytometry](#)
- [Cell Culture](#)

Amphiphysin I Polyclonal Antibody - Images



Amphiphysin I Polyclonal Antibody - Background

May participate in mechanisms of regulated exocytosis in synapses and certain endocrine cell types. May control the properties of the membrane associated cytoskeleton.