

**PTP4A2 Antibody (Center)**  
**affinity Purified Rabbit Polyclonal Antibody (Pab)**  
**Catalog # AP6838C**

**Specification**

---

**PTP4A2 Antibody (Center) - Product Information**

Application	IF, WB, IHC-P, FC,E
Primary Accession	<a href="#">O12974</a>
Other Accession	<a href="#">O6P9X4</a> , <a href="#">O70274</a>
Reactivity	Human
Predicted	Mouse, Rat
Host	Rabbit
Clonality	Polyclonal
Isotype	Rabbit IgG
Antigen Region	32-59

**PTP4A2 Antibody (Center) - Additional Information**

**Gene ID** 8073

**Other Names**

Protein tyrosine phosphatase type IVA 2, HU-PP-1, OV-1, PTP(CAAXII), Protein-tyrosine phosphatase 4a2, Protein-tyrosine phosphatase of regenerating liver 2, PRL-2, PTP4A2, PRL2, PTPCAAX2

**Target/Specificity**

This PTP4A2 antibody is generated from rabbits immunized with a KLH conjugated synthetic peptide between 32-59 amino acids from the Central region of human PTP4A2.

**Dilution**

IF~~1:10~50  
WB~~1:1000  
IHC-P~~1:50~100  
FC~~1:10~50

**Format**

Purified polyclonal antibody supplied in PBS with 0.09% (W/V) sodium azide. This antibody is purified through a protein A column, followed by peptide affinity purification.

**Storage**

Maintain refrigerated at 2-8°C for up to 2 weeks. For long term storage store at -20°C in small aliquots to prevent freeze-thaw cycles.

**Precautions**

PTP4A2 Antibody (Center) is for research use only and not for use in diagnostic or therapeutic procedures.

**PTP4A2 Antibody (Center) - Protein Information**

**Name** PTP4A2

**Synonyms** PRL2, PTPCAAX2

**Function** Protein tyrosine phosphatase which stimulates progression from G1 into S phase during mitosis. Promotes tumors. Inhibits geranylgeranyl transferase type II activity by blocking the association between RABGGTA and RABGGTB.

**Cellular Location**

Cell membrane. Early endosome. Cytoplasm.

**Tissue Location**

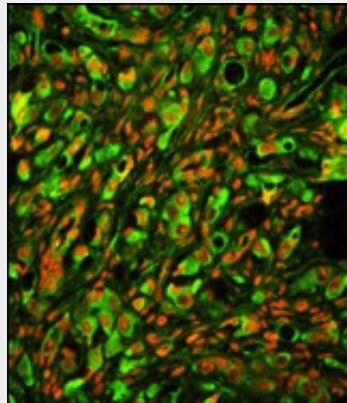
Ubiquitously expressed, with highest levels in skeletal muscle, heart and thymus. Overexpressed in prostate tumor tissue.

**PTP4A2 Antibody (Center) - Protocols**

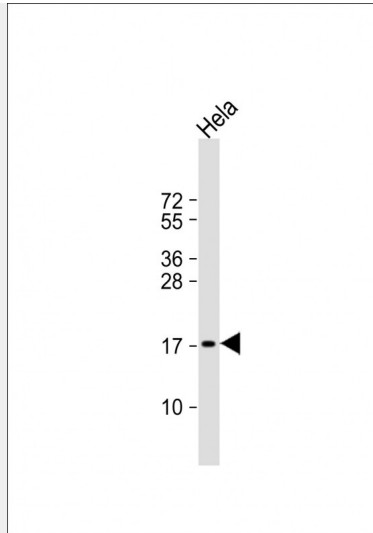
Provided below are standard protocols that you may find useful for product applications.

- [Western Blot](#)
- [Blocking Peptides](#)
- [Dot Blot](#)
- [Immunohistochemistry](#)
- [Immunofluorescence](#)
- [Immunoprecipitation](#)
- [Flow Cytometry](#)
- [Cell Culture](#)

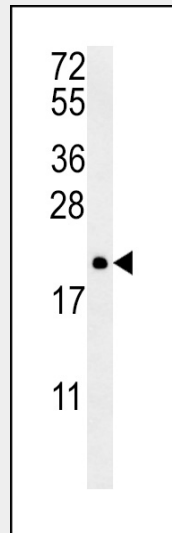
**PTP4A2 Antibody (Center) - Images**



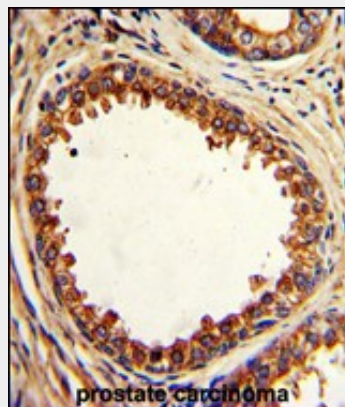
Immunofluorescence analysis of PTP4A2 Antibody (Center) with paraffin-embedded human prostate carcinoma tissue . 0.05 mg/ml primary antibody was followed by FITC-conjugated goat anti-rabbit IgG (whole molecule). FITC emits green fluorescence.Red counterstaining is PI.



Anti-PTP4A2 Antibody (Center) at 1:1000 dilution + HeLa whole cell lysate Lysates/proteins at 20  $\mu$ g per lane. Secondary Goat Anti-Rabbit IgG, (H+L), Peroxidase conjugated at 1/10000 dilution. Predicted band size : 19 kDa Blocking/Dilution buffer: 5% NFDM/TBST.

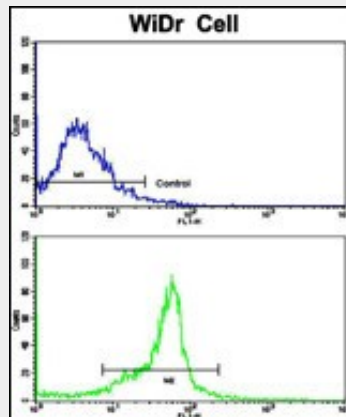


PTP4A2 Antibody (Center) (Cat. #AP6838c) western blot analysis in NCI-H460 cell line lysates (35ug/lane). This demonstrates the PTP4A2 antibody detected the PTP4A2 protein (arrow).



Formalin-fixed and paraffin-embedded human prostate carcinoma with PTP4A2 Antibody (Center), which was peroxidase-conjugated to the secondary antibody, followed by DAB staining. This data

demonstrates the use of this antibody for immunohistochemistry; clinical relevance has not been evaluated.



Flow cytometric analysis of wiDr cells using PTP4A2 Antibody (Center)(bottom histogram) compared to a negative control cell (top histogram). FITC-conjugated goat-anti-rabbit secondary antibodies were used for the analysis.

#### **PTP4A2 Antibody (Center) - Background**

PTP4A2 belongs to a small class of the protein tyrosine phosphatase (PTP) family. PTPs are cell signaling molecules that play regulatory roles in a variety of cellular processes. PTPs in this class contain a protein tyrosine phosphatase catalytic domain and a characteristic C-terminal prenylation motif. This PTP has been shown to primarily associate with plasmic and endosomal membrane through its C-terminal prenylation. This PTP was found to interact with the beta-subunit of Rab geranylgeranyltransferase II (beta GGT II), and thus may function as a regulator of GGT II activity.

#### **PTP4A2 Antibody (Center) - References**

Ewing,R.M., et.al., Mol. Syst. Biol. 3, 89 (2007)