

**ADAMTS-1 Polyclonal Antibody**  
Catalog # AP68295**Specification**

---

**ADAMTS-1 Polyclonal Antibody - Product Information**

|                   |                        |
|-------------------|------------------------|
| Application       | WB                     |
| Primary Accession | <a href="#">Q9UHI8</a> |
| Reactivity        | Human                  |
| Host              | Rabbit                 |
| Clonality         | Polyclonal             |

**ADAMTS-1 Polyclonal Antibody - Additional Information****Gene ID** 9510**Other Names**

ADAMTS1; KIAA1346; METH1; A disintegrin and metalloproteinase with thrombospondin motifs 1; ADAM-TS 1; ADAM-TS1; ADAMTS-1; METH-1

**Dilution**

WB~~Western Blot: 1/500 - 1/2000. ELISA: 1/5000. Not yet tested in other applications.

**Format**

Liquid in PBS containing 50% glycerol, 0.5% BSA and 0.09% (W/V) sodium azide.

**Storage Conditions**

-20°C

**ADAMTS-1 Polyclonal Antibody - Protein Information****Name** ADAMTS1**Synonyms** KIAA1346, METH1**Function**

Cleaves aggrecan, a cartilage proteoglycan, at the '1938- Glu-|-Leu-1939' site (within the chondroitin sulfate attachment domain), and may be involved in its turnover (By similarity). Has angiogenic inhibitor activity. Active metalloprotease, which may be associated with various inflammatory processes as well as development of cancer cachexia. May play a critical role in follicular rupture.

**Cellular Location**

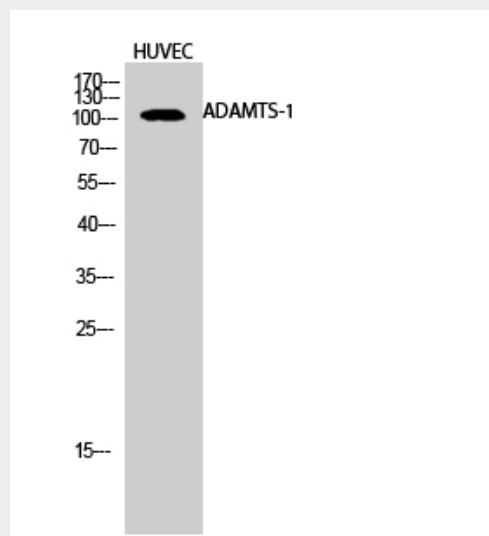
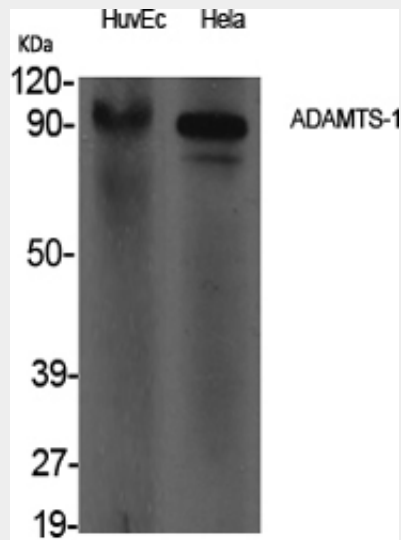
Secreted, extracellular space, extracellular matrix

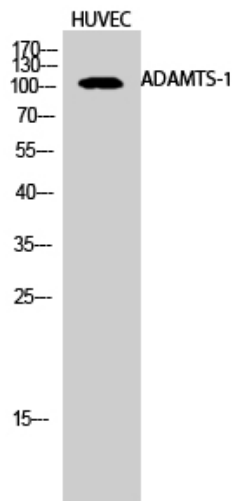
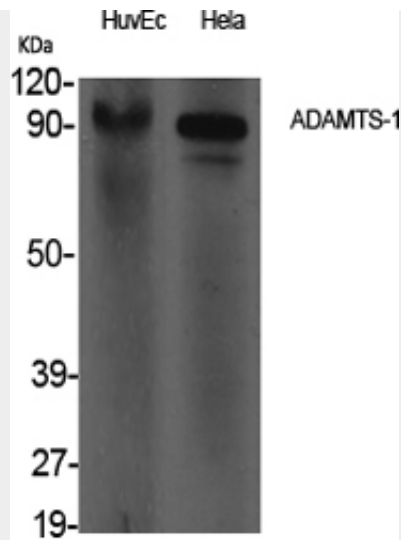
**ADAMTS-1 Polyclonal Antibody - Protocols**

Provided below are standard protocols that you may find useful for product applications.

- [Western Blot](#)
- [Blocking Peptides](#)
- [Dot Blot](#)
- [Immunohistochemistry](#)
- [Immunofluorescence](#)
- [Immunoprecipitation](#)
- [Flow Cytometry](#)
- [Cell Culture](#)

#### ADAMTS-1 Polyclonal Antibody - Images





### ADAMTS-1 Polyclonal Antibody - Background

Cleaves aggrecan, a cartilage proteoglycan, at the '1938-Glu-I-Leu-1939' site (within the chondroitin sulfate attachment domain), and may be involved in its turnover (By similarity). Has angiogenic inhibitor activity. Active metalloprotease, which may be associated with various inflammatory processes as well as development of cancer cachexia. May play a critical role in follicular rupture.