

ADAM32 Polyclonal Antibody
Catalog # AP68293**Specification**

ADAM32 Polyclonal Antibody - Product Information

Application	WB
Primary Accession	Q8TC27
Reactivity	Human
Host	Rabbit
Clonality	Polyclonal

ADAM32 Polyclonal Antibody - Additional Information**Gene ID** 203102**Other Names**

ADAM32; Disintegrin and metalloproteinase domain-containing protein 32; ADAM 32

Dilution

WB~~Western Blot: 1/500 - 1/2000. ELISA: 1/40000. Not yet tested in other applications.

Format

Liquid in PBS containing 50% glycerol, 0.5% BSA and 0.09% (W/V) sodium azide.

Storage Conditions

-20°C

ADAM32 Polyclonal Antibody - Protein Information**Name** ADAM32**Function**

May play a role in sperm development and fertilization This is a non-catalytic metalloprotease-like protein.

Cellular Location

Membrane; Single-pass type I membrane protein

Tissue Location

Testis specific..

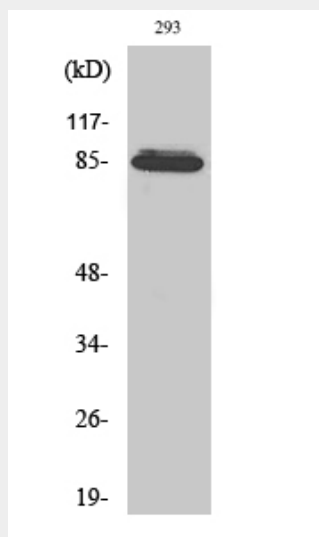
ADAM32 Polyclonal Antibody - Protocols

Provided below are standard protocols that you may find useful for product applications.

- [Western Blot](#)

- [Blocking Peptides](#)
- [Dot Blot](#)
- [Immunohistochemistry](#)
- [Immunofluorescence](#)
- [Immunoprecipitation](#)
- [Flow Cytometry](#)
- [Cell Culture](#)

ADAM32 Polyclonal Antibody - Images



ADAM32 Polyclonal Antibody - Background

May play a role in sperm development and fertilization This is a non-catalytic metalloprotease-like protein.