

**Actinin- $\alpha$ 3 Polyclonal Antibody**  
Catalog # AP68286**Specification**

---

**Actinin- $\alpha$ 3 Polyclonal Antibody - Product Information**

Application	WB
Primary Accession	<a href="#">Q08043</a>
Reactivity	Human, Mouse, Rat
Host	Rabbit
Clonality	Polyclonal

**Actinin- $\alpha$ 3 Polyclonal Antibody - Additional Information****Gene ID** 89**Other Names**

ACTN3; Alpha-actinin-3; Alpha-actinin skeletal muscle isoform 3; F-actin cross-linking protein

**Dilution**

WB~~Western Blot: 1/500 - 1/2000. Immunofluorescence: 1/200 - 1/1000. ELISA: 1/20000. Not yet tested in other applications.

**Format**

Liquid in PBS containing 50% glycerol, 0.5% BSA and 0.09% (W/V) sodium azide.

**Storage Conditions**

-20°C

**Actinin- $\alpha$ 3 Polyclonal Antibody - Protein Information****Name** ACTN3**Function**

F-actin cross-linking protein which is thought to anchor actin to a variety of intracellular structures. This is a bundling protein.

**Tissue Location**

Expression restricted to fast (type 2) skeletal muscle fibers (at protein level).

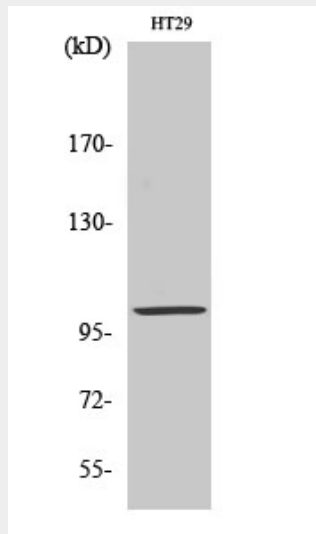
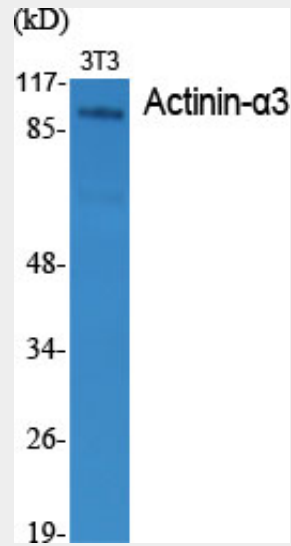
**Actinin- $\alpha$ 3 Polyclonal Antibody - Protocols**

Provided below are standard protocols that you may find useful for product applications.

- [Western Blot](#)
- [Blocking Peptides](#)
- [Dot Blot](#)

- [Immunohistochemistry](#)
- [Immunofluorescence](#)
- [Immunoprecipitation](#)
- [Flow Cytometry](#)
- [Cell Culture](#)

### Actinin- $\alpha$ 3 Polyclonal Antibody - Images



### Actinin- $\alpha$ 3 Polyclonal Antibody - Background

F-actin cross-linking protein which is thought to anchor actin to a variety of intracellular structures. This is a bundling protein.