

**AChR $\alpha$ 5 Polyclonal Antibody**  
Catalog # AP68266**Specification**

---

**AChR $\alpha$ 5 Polyclonal Antibody - Product Information**

Application	WB
Primary Accession	<a href="#">P30532</a>
Reactivity	Human, Mouse, Rat, Monkey
Host	Rabbit
Clonality	Polyclonal

**AChR $\alpha$ 5 Polyclonal Antibody - Additional Information****Gene ID** 1138**Other Names**

CHRNA5; NACHRA5; Neuronal acetylcholine receptor subunit alpha-5

**Dilution**

WB~~Western Blot: 1/500 - 1/2000. ELISA: 1/10000. Not yet tested in other applications.

**Format**

Liquid in PBS containing 50% glycerol, 0.5% BSA and 0.09% (W/V) sodium azide.

**Storage Conditions**

-20°C

**AChR $\alpha$ 5 Polyclonal Antibody - Protein Information****Name** CHRNA5**Synonyms** NACHRA5**Function**

After binding acetylcholine, the AChR responds by an extensive change in conformation that affects all subunits and leads to opening of an ion-conducting channel across the plasma membrane.

**Cellular Location**

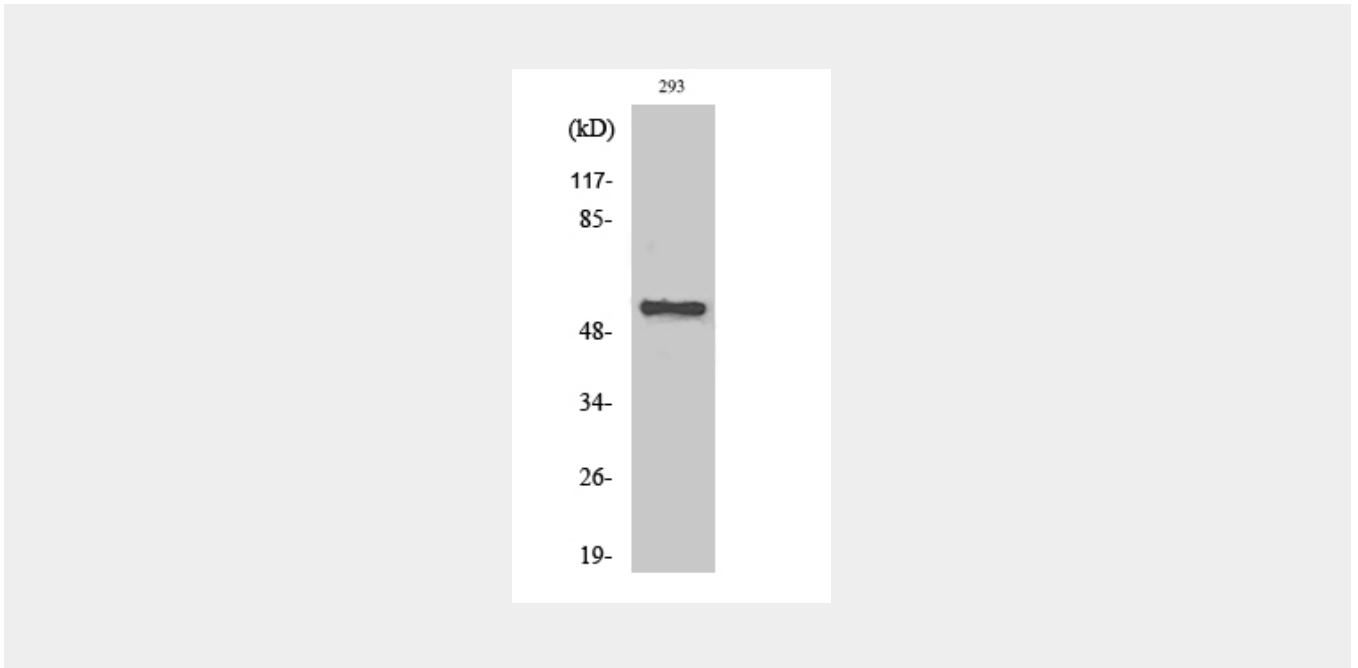
Postsynaptic cell membrane; Multi-pass membrane protein. Cell membrane; Multi-pass membrane protein

**AChR $\alpha$ 5 Polyclonal Antibody - Protocols**

Provided below are standard protocols that you may find useful for product applications.

- [Western Blot](#)
- [Blocking Peptides](#)
- [Dot Blot](#)
- [Immunohistochemistry](#)
- [Immunofluorescence](#)
- [Immunoprecipitation](#)
- [Flow Cytometry](#)
- [Cell Culture](#)

### **AChR $\alpha$ 5 Polyclonal Antibody - Images**



### **AChR $\alpha$ 5 Polyclonal Antibody - Background**

After binding acetylcholine, the AChR responds by an extensive change in conformation that affects all subunits and leads to opening of an ion-conducting channel across the plasma membrane.