

AChR α 3 Polyclonal Antibody
Catalog # AP68265**Specification**

AChR α 3 Polyclonal Antibody - Product Information

Application	WB
Primary Accession	P32297
Reactivity	Human, Mouse, Rat
Host	Rabbit
Clonality	Polyclonal

AChR α 3 Polyclonal Antibody - Additional Information**Gene ID** 1136**Other Names**

CHRNA3; NACHRA3; Neuronal acetylcholine receptor subunit alpha-3

Dilution

WB~~Western Blot: 1/500 - 1/2000. ELISA: 1/10000. Not yet tested in other applications.

Format

Liquid in PBS containing 50% glycerol, 0.5% BSA and 0.09% (W/V) sodium azide.

Storage Conditions

-20°C

AChR α 3 Polyclonal Antibody - Protein Information**Name** CHRNA3**Synonyms** NACHRA3**Function**

After binding acetylcholine, the AChR responds by an extensive change in conformation that affects all subunits and leads to opening of an ion-conducting channel across the plasma membrane.

Cellular Location

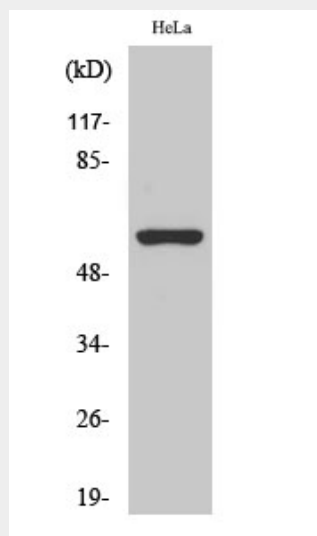
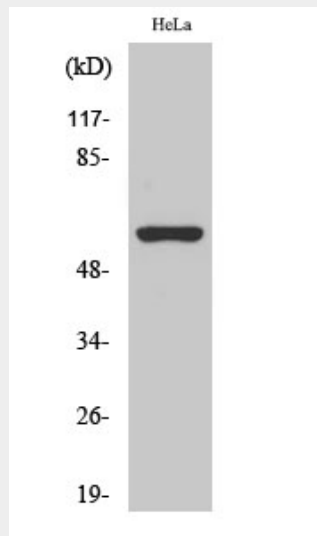
Postsynaptic cell membrane; Multi-pass membrane protein. Cell membrane; Multi-pass membrane protein. Endoplasmic reticulum {ECO:0000250|UniProtKB:P04757} Golgi apparatus {ECO:0000250|UniProtKB:P04757}. Note=Interaction with UBXN2A/UBXD4 promotes translocation to the plasma membrane {ECO:0000250|UniProtKB:P04757}

AChR α 3 Polyclonal Antibody - Protocols

Provided below are standard protocols that you may find useful for product applications.

- [Western Blot](#)
- [Blocking Peptides](#)
- [Dot Blot](#)
- [Immunohistochemistry](#)
- [Immunofluorescence](#)
- [Immunoprecipitation](#)
- [Flow Cytometry](#)
- [Cell Culture](#)

AChR α 3 Polyclonal Antibody - Images



AChR α 3 Polyclonal Antibody - Background

After binding acetylcholine, the AChR responds by an extensive change in conformation that affects all subunits and leads to opening of an ion-conducting channel across the plasma membrane.