

**ACAT-1 Polyclonal Antibody**  
Catalog # AP68254**Specification****ACAT-1 Polyclonal Antibody - Product Information**

Application	WB
Primary Accession	<a href="#">P24752</a>
Reactivity	Human, Mouse, Rat
Host	Rabbit
Clonality	Polyclonal

**ACAT-1 Polyclonal Antibody - Additional Information****Gene ID** 38**Other Names**

ACAT1; ACAT; MAT; Acetyl-CoA acetyltransferase; mitochondrial; Acetoacetyl-CoA thiolase; T2

**Dilution**

WB~~Western Blot: 1/500 - 1/2000. Immunohistochemistry: 1/100 - 1/300. ELISA: 1/40000. Not yet tested in other applications.

**Format**

Liquid in PBS containing 50% glycerol, 0.5% BSA and 0.09% (W/V) sodium azide.

**Storage Conditions**

-20°C

**ACAT-1 Polyclonal Antibody - Protein Information****Name** ACAT1**Synonyms** ACAT, MAT**Function**

This is one of the enzymes that catalyzes the last step of the mitochondrial beta-oxidation pathway, an aerobic process breaking down fatty acids into acetyl-CoA (PubMed: [1715688](http://www.uniprot.org/citations/1715688), PubMed: [7728148](http://www.uniprot.org/citations/7728148), PubMed: [9744475](http://www.uniprot.org/citations/9744475)). Using free coenzyme A/CoA, catalyzes the thiolytic cleavage of medium- to long-chain 3-oxoacyl-CoAs into acetyl-CoA and a fatty acyl-CoA shortened by two carbon atoms (PubMed: [1715688](http://www.uniprot.org/citations/1715688), PubMed: [7728148](http://www.uniprot.org/citations/7728148), PubMed: [9744475](http://www.uniprot.org/citations/9744475)). The activity of the enzyme is reversible and it can also catalyze the condensation of two acetyl-CoA molecules into acetoacetyl-CoA (PubMed: [17371050](http://www.uniprot.org/citations/17371050)). Thereby, it plays a major role in ketone body metabolism

(PubMed:<a href="http://www.uniprot.org/citations/1715688" target="\_blank">1715688</a>,  
PubMed:<a href="http://www.uniprot.org/citations/17371050" target="\_blank">17371050</a>,  
PubMed:<a href="http://www.uniprot.org/citations/7728148" target="\_blank">7728148</a>,  
PubMed:<a href="http://www.uniprot.org/citations/9744475" target="\_blank">9744475</a>).

### Cellular Location

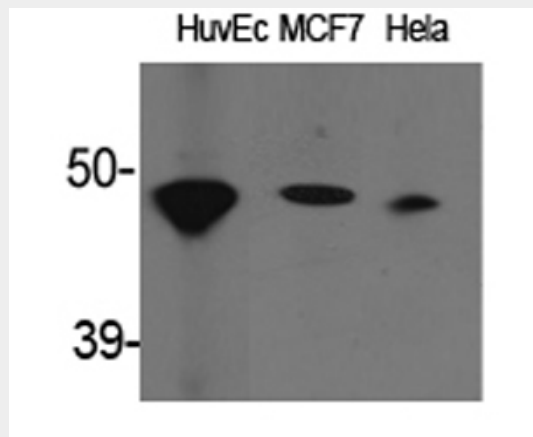
Mitochondrion.

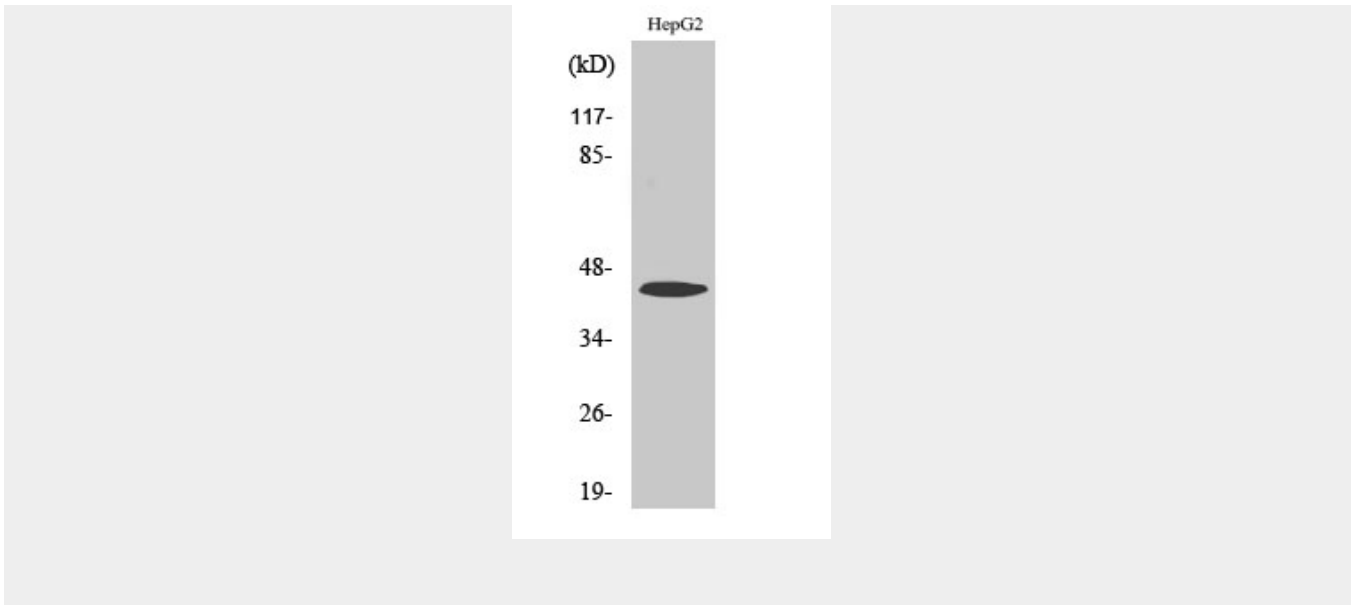
### ACAT-1 Polyclonal Antibody - Protocols

Provided below are standard protocols that you may find useful for product applications.

- [Western Blot](#)
- [Blocking Peptides](#)
- [Dot Blot](#)
- [Immunohistochemistry](#)
- [Immunofluorescence](#)
- [Immunoprecipitation](#)
- [Flow Cytometry](#)
- [Cell Culture](#)

### ACAT-1 Polyclonal Antibody - Images





### ACAT-1 Polyclonal Antibody - Background

Plays a major role in ketone body metabolism.