

AASS Polyclonal Antibody
Catalog # AP68224**Specification**

AASS Polyclonal Antibody - Product Information

Application	WB
Primary Accession	Q9UDR5
Reactivity	Human
Host	Rabbit
Clonality	Polyclonal

AASS Polyclonal Antibody - Additional Information**Gene ID** 10157**Other Names**

AASS; Alpha-aminoadipic semialdehyde synthase; mitochondrial; LKR/SDH

Dilution

WB~~Western Blot: 1/500 - 1/2000. ELISA: 1/10000. Not yet tested in other applications.

Format

Liquid in PBS containing 50% glycerol, 0.5% BSA and 0.09% (W/V) sodium azide.

Storage Conditions

-20°C

AASS Polyclonal Antibody - Protein Information**Name** AASS ([HGNC:17366](#))**Function**

Bifunctional enzyme that catalyzes the first two steps in lysine degradation.

Cellular Location

Mitochondrion.

Tissue Location

Expressed in all 16 tissues examined with highest expression in the liver

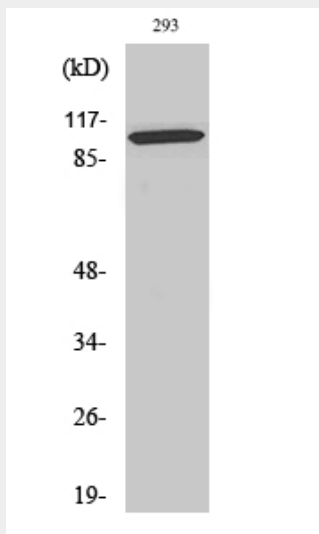
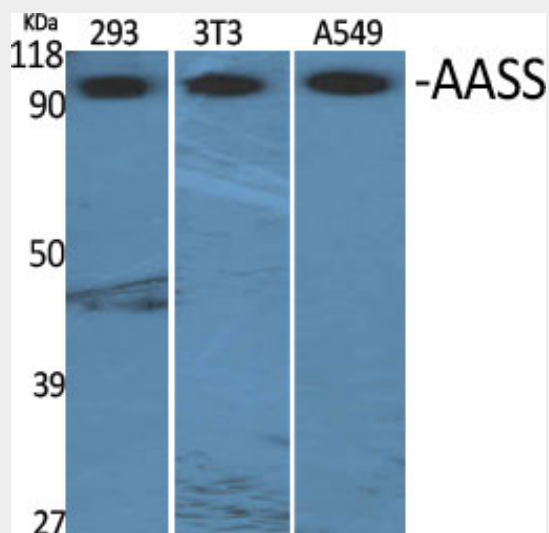
AASS Polyclonal Antibody - Protocols

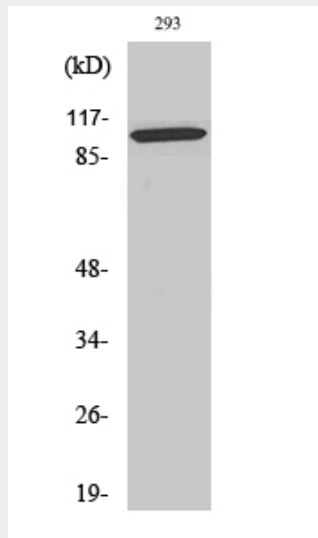
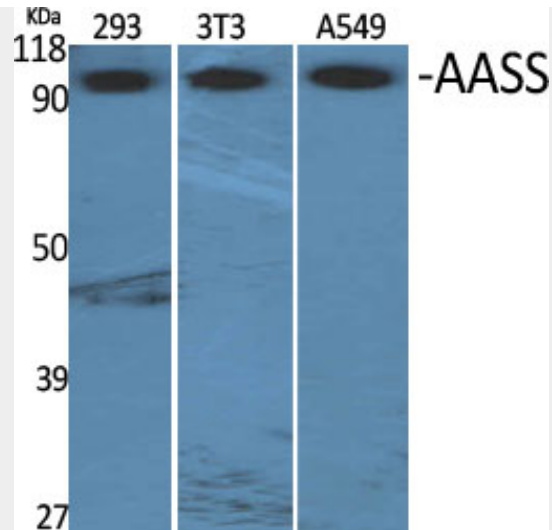
Provided below are standard protocols that you may find useful for product applications.

- [Western Blot](#)
- [Blocking Peptides](#)

- [Dot Blot](#)
- [Immunohistochemistry](#)
- [Immunofluorescence](#)
- [Immunoprecipitation](#)
- [Flow Cytometry](#)
- [Cell Culture](#)

AASS Polyclonal Antibody - Images





AASS Polyclonal Antibody - Background

Bifunctional enzyme that catalyzes the first two steps in lysine degradation. The N-terminal and the C-terminal contain lysine-ketoglutarate reductase and saccharopine dehydrogenase activity, respectively.