

A Cyclase IX Polyclonal Antibody
Catalog # AP68214**Specification****A Cyclase IX Polyclonal Antibody - Product Information**

Application	WB
Primary Accession	O60503
Reactivity	Human
Host	Rabbit
Clonality	Polyclonal

A Cyclase IX Polyclonal Antibody - Additional Information**Gene ID** 115**Other Names**

ADCY9; KIAA0520; Adenylate cyclase type 9; ATP pyrophosphate-lyase 9; Adenylate cyclase type IX; Adenylyl cyclase 9

Dilution

WB~~Western Blot: 1/500 - 1/2000. Immunohistochemistry: 1/100 - 1/300. ELISA: 1/10000. Not yet tested in other applications.

Format

Liquid in PBS containing 50% glycerol, 0.5% BSA and 0.09% (W/V) sodium azide.

Storage Conditions

-20°C

A Cyclase IX Polyclonal Antibody - Protein Information**Name** ADCY9**Synonyms** KIAA0520**Function**

Adenylyl cyclase that catalyzes the formation of the signaling molecule cAMP in response to activation of G protein-coupled receptors (PubMed: [10987815](http://www.uniprot.org/citations/10987815), PubMed: [12972952](http://www.uniprot.org/citations/12972952), PubMed: [15879435](http://www.uniprot.org/citations/15879435), PubMed: [9628827](http://www.uniprot.org/citations/9628827)). Contributes to signaling cascades activated by CRH (corticotropin-releasing factor), corticosteroids and beta-adrenergic receptors (PubMed: [9628827](http://www.uniprot.org/citations/9628827)).

Cellular Location

Cell membrane; Multi-pass membrane protein

Tissue Location

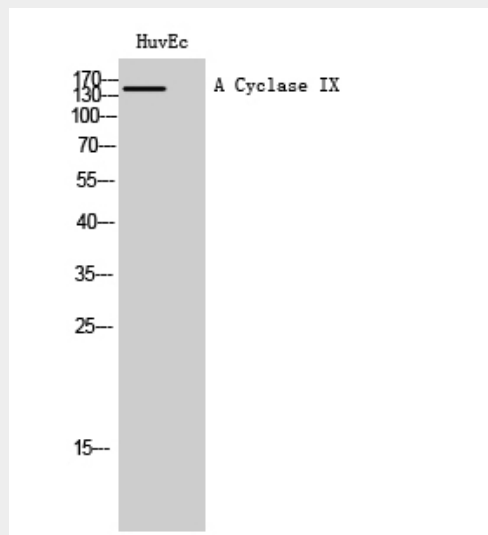
Detected in skeletal muscle, pancreas, lung, heart, kidney, liver, brain and placenta (PubMed:10987815, PubMed:9628827) Expressed in multiple cells of the lung, with expression highest in airway smooth muscle (PubMed:12972952).

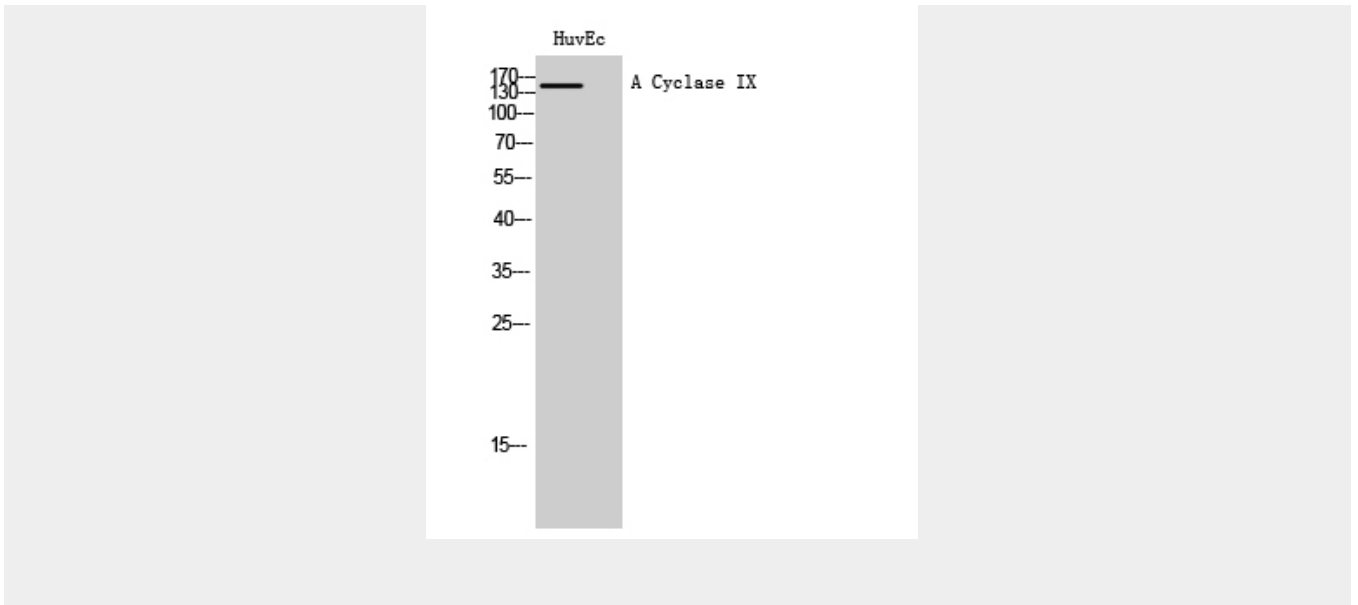
A Cyclase IX Polyclonal Antibody - Protocols

Provided below are standard protocols that you may find useful for product applications.

- [Western Blot](#)
- [Blocking Peptides](#)
- [Dot Blot](#)
- [Immunohistochemistry](#)
- [Immunofluorescence](#)
- [Immunoprecipitation](#)
- [Flow Cytometry](#)
- [Cell Culture](#)

A Cyclase IX Polyclonal Antibody - Images





A Cyclase IX Polyclonal Antibody - Background

Adenylyl cyclase that catalyzes the formation of the signaling molecule cAMP in response to activation of G protein- coupled receptors (PubMed:9628827, PubMed:12972952, PubMed:15879435, PubMed:10987815). Contributes to signaling cascades activated by CRH (corticotropin-releasing factor), corticosteroids and beta-adrenergic receptors (PubMed:9628827).