

A Cyclase IV Polyclonal Antibody
Catalog # AP68213**Specification**

A Cyclase IV Polyclonal Antibody - Product Information

Application	WB
Primary Accession	Q8NFM4
Reactivity	Human, Mouse, Rat
Host	Rabbit
Clonality	Polyclonal

A Cyclase IV Polyclonal Antibody - Additional Information**Gene ID** 196883**Other Names**

ADCY4; Adenylate cyclase type 4; ATP pyrophosphate-lyase 4; Adenylate cyclase type IV; Adenylyl cyclase 4

Dilution

WB~~Western Blot: 1/500 - 1/2000. ELISA: 1/20000. Not yet tested in other applications.

Format

Liquid in PBS containing 50% glycerol, 0.5% BSA and 0.09% (W/V) sodium azide.

Storage Conditions

-20°C

A Cyclase IV Polyclonal Antibody - Protein Information**Name** ADCY4**Function**

Catalyzes the formation of the signaling molecule cAMP in response to G-protein signaling.

Cellular Location

Cell membrane; Multi-pass membrane protein. Cytoplasm

Tissue Location

Detected in the zona glomerulosa and the zona fasciculata in the adrenal gland (at protein level)

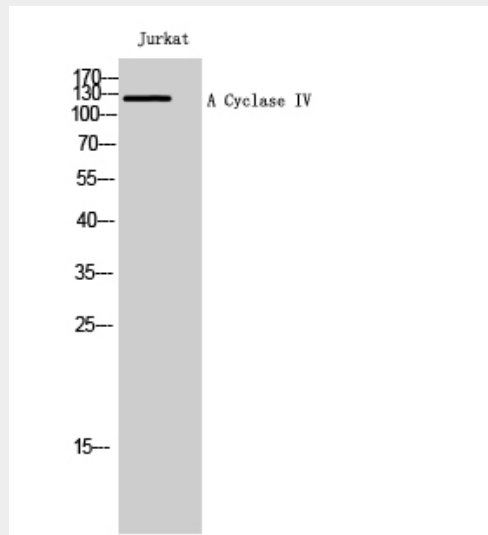
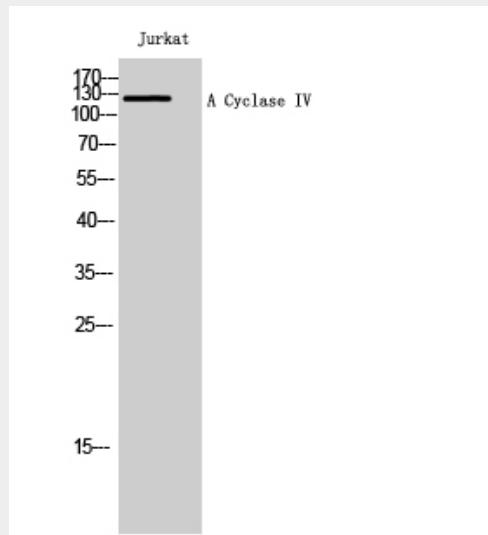
A Cyclase IV Polyclonal Antibody - Protocols

Provided below are standard protocols that you may find useful for product applications.

- [Western Blot](#)

- [Blocking Peptides](#)
- [Dot Blot](#)
- [Immunohistochemistry](#)
- [Immunofluorescence](#)
- [Immunoprecipitation](#)
- [Flow Cytometry](#)
- [Cell Culture](#)

A Cyclase IV Polyclonal Antibody - Images



A Cyclase IV Polyclonal Antibody - Background

Catalyzes the formation of the signaling molecule cAMP in response to G-protein signaling.