

A Cyclase I Polyclonal Antibody
Catalog # AP68212**Specification****A Cyclase I Polyclonal Antibody - Product Information**

Application	WB
Primary Accession	Q08828
Reactivity	Human, Mouse
Host	Rabbit
Clonality	Polyclonal

A Cyclase I Polyclonal Antibody - Additional Information**Gene ID** 107**Other Names**

ADCY1; Adenylate cyclase type 1; ATP pyrophosphate-lyase 1; Adenylate cyclase type I; Adenylyl cyclase 1; Ca(2+)/calmodulin-activated adenylyl cyclase

Dilution

WB~~Western Blot: 1/500 - 1/2000. Immunohistochemistry: 1/100 - 1/300. ELISA: 1/40000. Not yet tested in other applications.

Format

Liquid in PBS containing 50% glycerol, 0.5% BSA and 0.09% (W/V) sodium azide.

Storage Conditions

-20°C

A Cyclase I Polyclonal Antibody - Protein Information**Name** ADCY1**Function**

Catalyzes the formation of the signaling molecule cAMP in response to G-protein signaling. Mediates responses to increased cellular Ca(2+)/calmodulin levels (By similarity). May be involved in regulatory processes in the central nervous system. May play a role in memory and learning. Plays a role in the regulation of the circadian rhythm of daytime contrast sensitivity probably by modulating the rhythmic synthesis of cyclic AMP in the retina (By similarity).

Cellular Location

Membrane {ECO:0000250|UniProtKB:P19754}; Multi-pass membrane protein {ECO:0000250|UniProtKB:P19754}. Cell membrane; Multi-pass membrane protein. Cytoplasm {ECO:0000250|UniProtKB:O88444}. Membrane raft {ECO:0000250|UniProtKB:P19754}. Note=Expressed in the cytoplasm of supporting cells and hair cells of the cochlea vestibule, as well as to the cochlear hair cell nuclei and stereocilia {ECO:0000250|UniProtKB:O88444}

Tissue Location

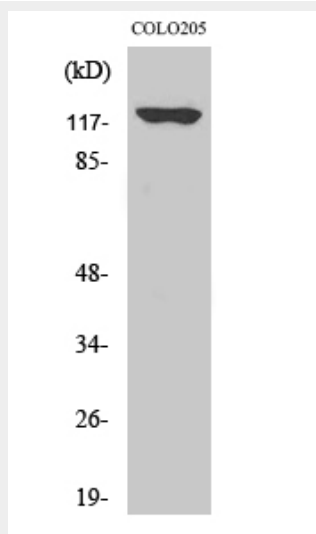
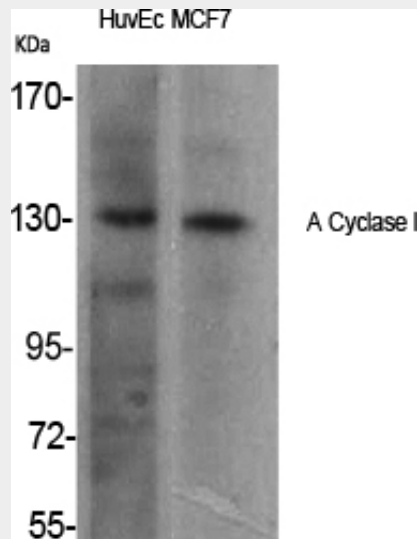
Detected in zona glomerulosa and zona fasciculata in the adrenal gland (at protein level) (PubMed:11549699). Brain, retina and adrenal medulla.

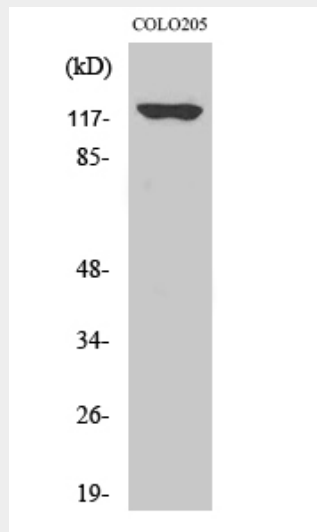
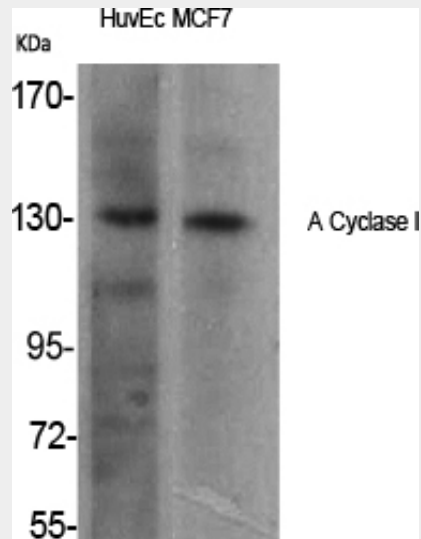
A Cyclase I Polyclonal Antibody - Protocols

Provided below are standard protocols that you may find useful for product applications.

- [Western Blot](#)
- [Blocking Peptides](#)
- [Dot Blot](#)
- [Immunohistochemistry](#)
- [Immunofluorescence](#)
- [Immunoprecipitation](#)
- [Flow Cytometry](#)
- [Cell Culture](#)

A Cyclase I Polyclonal Antibody - Images





A Cyclase I Polyclonal Antibody - Background

Catalyzes the formation of the signaling molecule cAMP in response to G-protein signaling. Mediates responses to increased cellular Ca^{2+} /calmodulin levels (By similarity). May be involved in regulatory processes in the central nervous system. May play a role in memory and learning. Plays a role in the regulation of the circadian rhythm of daytime contrast sensitivity probably by modulating the rhythmic synthesis of cyclic AMP in the retina (By similarity).