

HSP27 (Phospho S78/82) Polyclonal Antibody
Catalog # AP68182**Specification****HSP27 (Phospho S78/82) Polyclonal Antibody - Product Information**

Application	WB
Primary Accession	P04792
Reactivity	Human, Mouse, Rat
Host	Rabbit
Clonality	Polyclonal

HSP27 (Phospho S78/82) Polyclonal Antibody - Additional Information**Gene ID** 3315**Other Names**

Heat shock protein beta-1 (HspB1) (28 kDa heat shock protein) (Estrogen-regulated 24 kDa protein) (Heat shock 27 kDa protein) (HSP 27) (Stress-responsive protein 27) (SRP27)

Dilution

WB~~WB 1:500-2000, ELISA(peptide)1:5000-20000

Format

Liquid in PBS containing 50% glycerol, 0.5% BSA and 0.09% (W/V) sodium azide.

Storage Conditions

-20°C

HSP27 (Phospho S78/82) Polyclonal Antibody - Protein Information**Name** HSPB1**Synonyms** HSP27, HSP28**Function**

Small heat shock protein which functions as a molecular chaperone probably maintaining denatured proteins in a folding-competent state (PubMed: [10383393](http://www.uniprot.org/citations/10383393), PubMed: [20178975](http://www.uniprot.org/citations/20178975)). Plays a role in stress resistance and actin organization (PubMed: [19166925](http://www.uniprot.org/citations/19166925)). Through its molecular chaperone activity may regulate numerous biological processes including the phosphorylation and the axonal transport of neurofilament proteins (PubMed: [23728742](http://www.uniprot.org/citations/23728742)).

Cellular Location

Cytoplasm. Nucleus Cytoplasm, cytoskeleton, spindle Note=Cytoplasmic in interphase cells. Colocalizes with mitotic spindles in mitotic cells. Translocates to the nucleus during heat shock and

resides in sub-nuclear structures known as SC35 speckles or nuclear splicing speckles.

Tissue Location

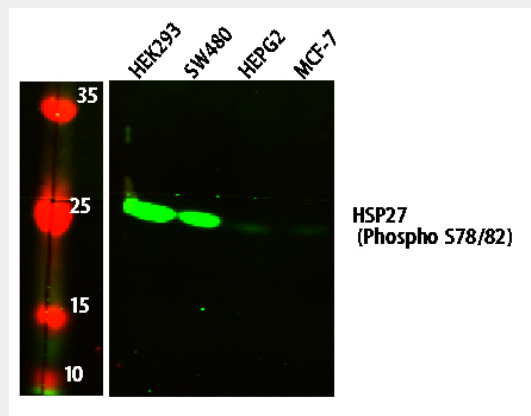
Detected in all tissues tested: skeletal muscle, heart, aorta, large intestine, small intestine, stomach, esophagus, bladder, adrenal gland, thyroid, pancreas, testis, adipose tissue, kidney, liver, spleen, cerebral cortex, blood serum and cerebrospinal fluid. Highest levels are found in the heart and in tissues composed of striated and smooth muscle.

HSP27 (Phospho S78/82) Polyclonal Antibody - Protocols

Provided below are standard protocols that you may find useful for product applications.

- [Western Blot](#)
- [Blocking Peptides](#)
- [Dot Blot](#)
- [Immunohistochemistry](#)
- [Immunofluorescence](#)
- [Immunoprecipitation](#)
- [Flow Cytometry](#)
- [Cell Culture](#)

HSP27 (Phospho S78/82) Polyclonal Antibody - Images



HSP27 (Phospho S78/82) Polyclonal Antibody - Background

Small heat shock protein which functions as a molecular chaperone probably maintaining denatured proteins in a folding-competent state (PubMed:10383393, PubMed:20178975). Plays a role in stress resistance and actin organization (PubMed:19166925). Through its molecular chaperone activity may regulate numerous biological processes including the phosphorylation and the axonal transport of neurofilament proteins (PubMed:23728742).