

HIP116A Antibody (Center)
Purified Rabbit Polyclonal Antibody (Pab)
Catalog # AP6812c**Specification**

HIP116A Antibody (Center) - Product Information

| | |
|-------------------|------------------------|
| Application | WB, FC,E |
| Primary Accession | Q14527 |
| Reactivity | Human |
| Host | Rabbit |
| Clonality | Polyclonal |
| Isotype | Rabbit IgG |
| Calculated MW | 113929 |
| Antigen Region | 409-437 |

HIP116A Antibody (Center) - Additional Information**Gene ID** 6596**Other Names**

Helicase-like transcription factor, 364-, 632-, DNA-binding protein/plasminogen activator inhibitor 1 regulator, HIP116, RING finger protein 80, SWI/SNF-related matrix-associated actin-dependent regulator of chromatin subfamily A member 3, Sucrose nonfermenting protein 2-like 3, HLTF, HIP116A, RNF80, SMARCA3, SNF2L3, ZBU1

Target/Specificity

This HIP116A antibody is generated from rabbits immunized with a KLH conjugated synthetic peptide between 409-437 amino acids from the Central region of human HIP116A.

Dilution

WB~~1:1000
FC~~1:10~50

Format

Purified polyclonal antibody supplied in PBS with 0.09% (W/V) sodium azide. This antibody is prepared by Saturated Ammonium Sulfate (SAS) precipitation followed by dialysis against PBS.

Storage

Maintain refrigerated at 2-8°C for up to 2 weeks. For long term storage store at -20°C in small aliquots to prevent freeze-thaw cycles.

Precautions

HIP116A Antibody (Center) is for research use only and not for use in diagnostic or therapeutic procedures.

HIP116A Antibody (Center) - Protein Information**Name** HLTF

Synonyms HIP116A, RNF80, SMARCA3, SNF2L3, ZBU1

Function Has both helicase and E3 ubiquitin ligase activities. Possesses intrinsic ATP-dependent nucleosome-remodeling activity; This activity may be required for transcriptional activation or repression of specific target promoters (By similarity). These may include the SERPINE1 and HIV-1 promoters and the SV40 enhancer, to which this protein can bind directly. Plays a role in error-free postreplication repair (PRR) of damaged DNA and maintains genomic stability through acting as a ubiquitin ligase for 'Lys-63'-linked polyubiquitination of chromatin-bound PCNA.

Cellular Location

Cytoplasm. Nucleus. Nucleus, nucleolus Nucleus, nucleoplasm. Note=Nuclear localization is stimulated by progesterone.

Tissue Location

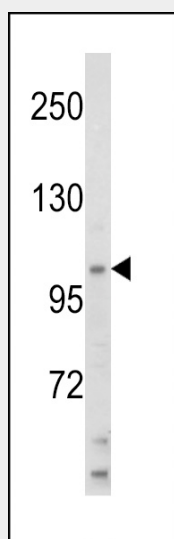
Expressed in brain, heart, kidney, liver, lung, pancreas, placenta and skeletal muscle.

HIP116A Antibody (Center) - Protocols

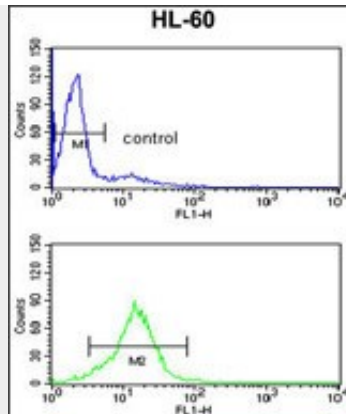
Provided below are standard protocols that you may find useful for product applications.

- [Western Blot](#)
- [Blocking Peptides](#)
- [Dot Blot](#)
- [Immunohistochemistry](#)
- [Immunofluorescence](#)
- [Immunoprecipitation](#)
- [Flow Cytometry](#)
- [Cell Culture](#)

HIP116A Antibody (Center) - Images



Western blot analysis of HIP116A Antibody (Center) (Cat. #AP6812c) in HL60 cell line lysates (35ug/lane). HIP116A (arrow) was detected using the purified Pab.



HIP116A Antibody (Center) (Cat. #AP6812c) flow cytometry analysis of HL-60 cells (bottom histogram) compared to a negative control cell (top histogram). FITC-conjugated goat-anti-rabbit secondary antibodies were used for the analysis.

HIP116A Antibody (Center) - Background

HIP116A is a member of the SWI/SNF family. Members of this family have helicase and ATPase activities and are thought to regulate transcription of certain genes by altering the chromatin structure around those genes. This protein contains a RING finger DNA binding motif.

HIP116A Antibody (Center) - References

Ding, H., et al., DNA Cell Biol. 15 (6), 429-442 (1996)