

Bim (phospho Ser59) Polyclonal Antibody
Catalog # AP67997**Specification****Bim (phospho Ser59) Polyclonal Antibody - Product Information**

Application	IHC
Primary Accession	O43521
Reactivity	Human, Mouse, Rat
Host	Rabbit
Clonality	Polyclonal

Bim (phospho Ser59) Polyclonal Antibody - Additional Information**Gene ID** 10018**Other Names**

BCL2L11; BIM; Bcl-2-like protein 11; Bcl2-L-11; Bcl2-interacting mediator of cell death

Dilution

IHC~~Immunohistochemistry: 1/100 - 1/300. ELISA: 1/40000. Not yet tested in other applications.

Format

Liquid in PBS containing 50% glycerol, 0.5% BSA and 0.09% (W/V) sodium azide.

Storage Conditions

-20°C

Bim (phospho Ser59) Polyclonal Antibody - Protein Information**Name** BCL2L11**Synonyms** BIM**Function**

Induces apoptosis and anoikis. Isoform BimL is more potent than isoform BimEL. Isoform Bim-alpha1, isoform Bim-alpha2 and isoform Bim-alpha3 induce apoptosis, although less potent than isoform BimEL, isoform BimL and isoform BimS. Isoform Bim-gamma induces apoptosis. Isoform Bim-alpha3 induces apoptosis possibly through a caspase-mediated pathway. Isoform BimAC and isoform BimABC lack the ability to induce apoptosis.

Cellular Location

Endomembrane system; Peripheral membrane protein. Note=Associated with intracytoplasmic membranes. [Isoform BimL]: Mitochondrion. [Isoform Bim-alpha1]: Mitochondrion.

Tissue Location

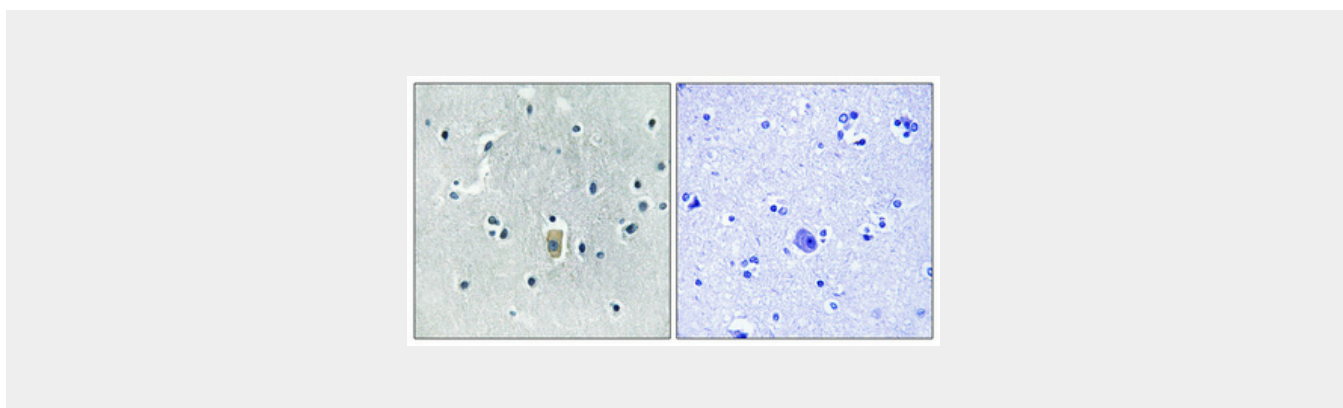
Isoform BimEL, isoform BimL and isoform BimS are the predominant isoforms and are widely expressed with tissue-specific variation. Isoform Bim-gamma is most abundantly expressed in small intestine and colon, and in lower levels in spleen, prostate, testis, heart, liver and kidney.

Bim (phospho Ser59) Polyclonal Antibody - Protocols

Provided below are standard protocols that you may find useful for product applications.

- [Western Blot](#)
- [Blocking Peptides](#)
- [Dot Blot](#)
- [Immunohistochemistry](#)
- [Immunofluorescence](#)
- [Immunoprecipitation](#)
- [Flow Cytometry](#)
- [Cell Culture](#)

Bim (phospho Ser59) Polyclonal Antibody - Images



Bim (phospho Ser59) Polyclonal Antibody - Background

Induces apoptosis and anoikis. Isoform BimL is more potent than isoform BimEL. Isoform Bim-alpha1, isoform Bim-alpha2 and isoform Bim-alpha3 induce apoptosis, although less potent than isoform BimEL, isoform BimL and isoform BimS. Isoform Bim-gamma induces apoptosis. Isoform Bim-alpha3 induces apoptosis possibly through a caspase-mediated pathway. Isoform BimAC and isoform BimABC lack the ability to induce apoptosis.