

HMGCS2 Antibody (C-term)
Purified Rabbit Polyclonal Antibody (Pab)
Catalog # AP6793b

Specification

HMGCS2 Antibody (C-term) - Product Information

Application	WB, IHC-P, FC,E
Primary Accession	P54868
Reactivity	Human
Host	Rabbit
Clonality	Polyclonal
Isotype	Rabbit IgG
Calculated MW	56635
Antigen Region	478-508

HMGCS2 Antibody (C-term) - Additional Information

Gene ID 3158

Other Names

Hydroxymethylglutaryl-CoA synthase, mitochondrial, HMG-CoA synthase,
3-hydroxy-3-methylglutaryl coenzyme A synthase, HMGCS2

Target/Specificity

This HMGCS2 antibody is generated from rabbits immunized with a KLH conjugated synthetic peptide between 478-508 amino acids from the C-terminal region of human HMGCS2.

Dilution

WB~~1:1000
IHC-P~~1:10~50
FC~~1:10~50

Format

Purified polyclonal antibody supplied in PBS with 0.09% (W/V) sodium azide. This antibody is prepared by Saturated Ammonium Sulfate (SAS) precipitation followed by dialysis against PBS.

Storage

Maintain refrigerated at 2-8°C for up to 2 weeks. For long term storage store at -20°C in small aliquots to prevent freeze-thaw cycles.

Precautions

HMGCS2 Antibody (C-term) is for research use only and not for use in diagnostic or therapeutic procedures.

HMGCS2 Antibody (C-term) - Protein Information

Name HMGCS2

Function Catalyzes the first irreversible step in ketogenesis, condensing acetyl-CoA to acetoacetyl-CoA to form HMG-CoA, which is converted by HMG-CoA reductase (HMGCR) into mevalonate.

Cellular Location

Mitochondrion {ECO:0000250|UniProtKB:P22791}.

Tissue Location

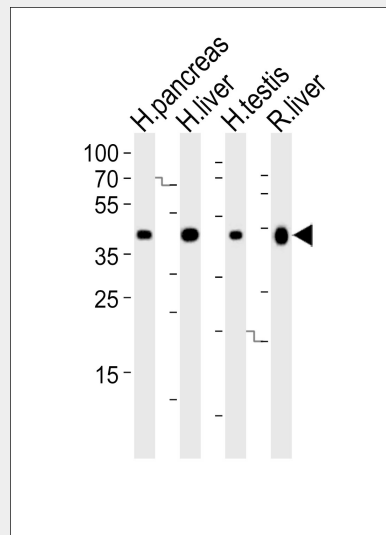
Expression in liver is 200-fold higher than in any other tissue. Low expression in colon, kidney, testis, and pancreas Very low expression in heart and skeletal muscle (PubMed:16940161, PubMed:21952825, PubMed:7893153). Not detected in brain (PubMed:21952825).

HMGCS2 Antibody (C-term) - Protocols

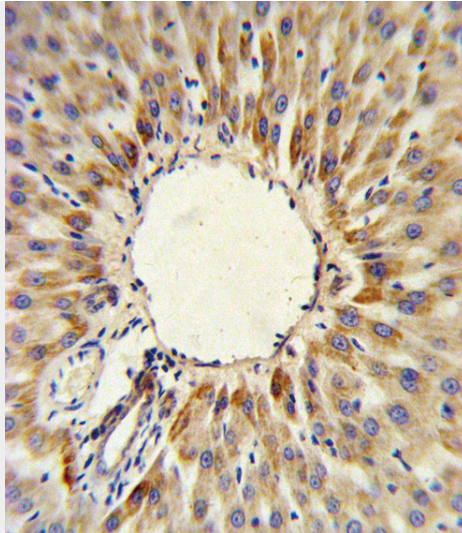
Provided below are standard protocols that you may find useful for product applications.

- [Western Blot](#)
- [Blocking Peptides](#)
- [Dot Blot](#)
- [Immunohistochemistry](#)
- [Immunofluorescence](#)
- [Immunoprecipitation](#)
- [Flow Cytometry](#)
- [Cell Culture](#)

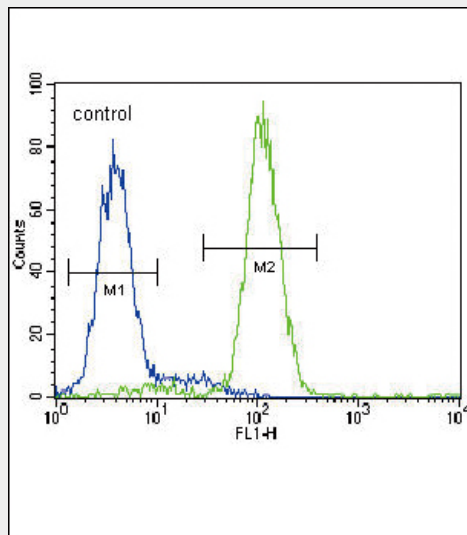
HMGCS2 Antibody (C-term) - Images



Western blot analysis of lysates from human pancreas, liver, testis and rat liver tissue lysate (from left to right), using HMGCS2 Antibody (C-term)(Cat. #AP6793b). AP6793b was diluted at 1:1000 at each lane. A goat anti-rabbit IgG H&L(HRP) at 1:10000 dilution was used as the secondary antibody. Lysates at 35ug per lane.



HMGCs2 Antibody (C-term) (Cat. #AP6793b) IHC analysis in formalin fixed and paraffin embedded human hepatocarcinoma followed by peroxidase conjugation of the secondary antibody and DAB staining. This data demonstrates the use of the HMGCs2 Antibody (C-term) for immunohistochemistry. Clinical relevance has not been evaluated.



HMGCs2 Antibody (C-term) (Cat. #AP6793b) flow cytometric analysis of HepG2 cells (right histogram) compared to a negative control cell (left histogram). FITC-conjugated goat-anti-rabbit secondary antibodies were used for the analysis.

HMGCs2 Antibody (C-term) - Background

HMGCs2 belongs to the HMG-CoA synthase family. It is a mitochondrial enzyme that catalyzes the first reaction of ketogenesis, a metabolic pathway that provides lipid-derived energy for various organs during times of carbohydrate deprivation, such as fasting.

HMGCs2 Antibody (C-term) - References

Lu, Y., et al., J. Lipid Res. 49 (12), 2582-2589 (2008)

HMGCs2 Antibody (C-term) - Citations

- [Hepatocellular carcinoma redirects to ketolysis for progression under nutrition deprivation stress.](#)

