

FKBP11 Antibody (C-term)
Affinity Purified Rabbit Polyclonal Antibody (Pab)
Catalog # AP6790b**Specification**

FKBP11 Antibody (C-term) - Product Information

Application	WB, IHC-P, FC,E
Primary Accession	O9NYL4
Reactivity	Human, Mouse
Host	Rabbit
Clonality	Polyclonal
Isotype	Rabbit IgG
Calculated MW	22180
Antigen Region	159-188

FKBP11 Antibody (C-term) - Additional Information**Gene ID** 51303**Other Names**

Peptidyl-prolyl cis-trans isomerase FKBP11, PPIase FKBP11, 19 kDa FK506-binding protein, 19 kDa FKBP, FKBP-19, FK506-binding protein 11, FKBP-11, Rotamase, FKBP11, FKBP19

Target/Specificity

This FKBP11 antibody is generated from rabbits immunized with a KLH conjugated synthetic peptide between 159-188 amino acids from the C-terminal region of human FKBP11.

DilutionWB~~1:1000
IHC-P~~1:50~100
FC~~1:10~50**Format**

Purified polyclonal antibody supplied in PBS with 0.09% (W/V) sodium azide. This antibody is prepared by Saturated Ammonium Sulfate (SAS) precipitation followed by dialysis against PBS.

Storage

Maintain refrigerated at 2-8°C for up to 2 weeks. For long term storage store at -20°C in small aliquots to prevent freeze-thaw cycles.

Precautions

FKBP11 Antibody (C-term) is for research use only and not for use in diagnostic or therapeutic procedures.

FKBP11 Antibody (C-term) - Protein Information**Name** FKBP11

Synonyms FKBP19

Function PPlases accelerate the folding of proteins during protein synthesis.

Cellular Location

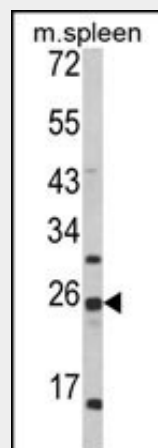
Membrane; Single-pass membrane protein

FKBP11 Antibody (C-term) - Protocols

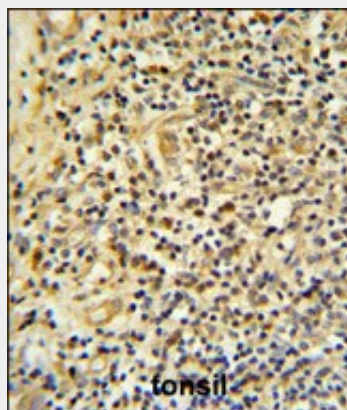
Provided below are standard protocols that you may find useful for product applications.

- [Western Blot](#)
- [Blocking Peptides](#)
- [Dot Blot](#)
- [Immunohistochemistry](#)
- [Immunofluorescence](#)
- [Immunoprecipitation](#)
- [Flow Cytometry](#)
- [Cell Culture](#)

FKBP11 Antibody (C-term) - Images

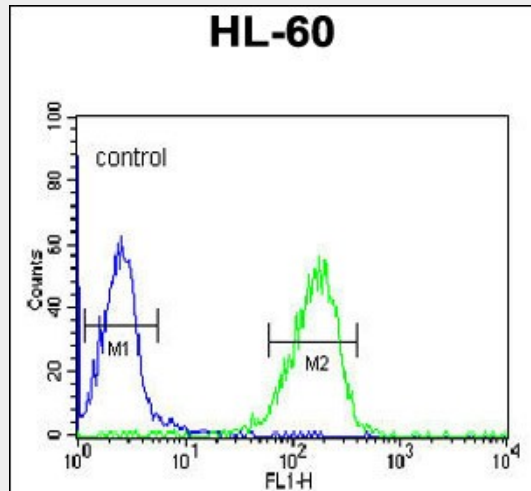


Western blot analysis of FKBP11 Antibody (C-term) (Cat. #AP6790b) in mouse spleen tissue lysates (35ug/lane). FKBP11 (arrow) was detected using the purified Pab.



FKBP11 Antibody (C-term) (Cat. #AP6790b) IHC analysis in formalin fixed and paraffin embedded

human tonsil tissue followed by peroxidase conjugation of the secondary antibody and DAB staining. This data demonstrates the use of the FKBP11 Antibody (C-term) for immunohistochemistry. Clinical relevance has not been evaluated.



FKBP11 Antibody (C-term) (Cat. #AP6790b) flow cytometric analysis of HL-60 cells (right histogram) compared to a negative control cell (left histogram). FITC-conjugated goat-anti-rabbit secondary antibodies were used for the analysis.

FKBP11 Antibody (C-term) - Background

FKBP11 belongs to the FKBP family of peptidyl-prolyl cis/trans isomerases, which catalyze the folding of proline-containing polypeptides. The peptidyl-prolyl isomerase activity of FKBP proteins is inhibited by the immunosuppressant compounds FK506 and rapamycin.

FKBP11 Antibody (C-term) - References

Rulten, S.L., et al., Mamm. Genome 17 (4), 322-331 (2006)