

## Net (phospho Ser357) Polyclonal Antibody Catalog # AP67852

### Specification

---

#### Net (phospho Ser357) Polyclonal Antibody - Product Information

Application	WB
Primary Accession	<a href="#">P41970</a>
Reactivity	Human, Mouse, Monkey
Host	Rabbit
Clonality	Polyclonal

#### Net (phospho Ser357) Polyclonal Antibody - Additional Information

Gene ID 2004

#### Other Names

ELK3; NET; SAP2; ETS domain-containing protein Elk-3; ETS-related protein ERP; ETS-related protein NET; Serum response factor accessory protein 2; SAP-2; SRF accessory protein 2

#### Dilution

WB~~Western Blot: 1/500 - 1/2000. Immunohistochemistry: 1/100 - 1/300. Immunofluorescence: 1/200 - 1/1000. ELISA: 1/20000. Not yet tested in other applications.

#### Format

Liquid in PBS containing 50% glycerol, 0.5% BSA and 0.09% (W/V) sodium azide.

#### Storage Conditions

-20°C

#### Net (phospho Ser357) Polyclonal Antibody - Protein Information

Name ELK3

Synonyms NET, SAP2

#### Function

May be a negative regulator of transcription, but can activate transcription when coexpressed with Ras, Src or Mos. Forms a ternary complex with the serum response factor and the ETS and SRF motifs of the Fos serum response element.

#### Cellular Location

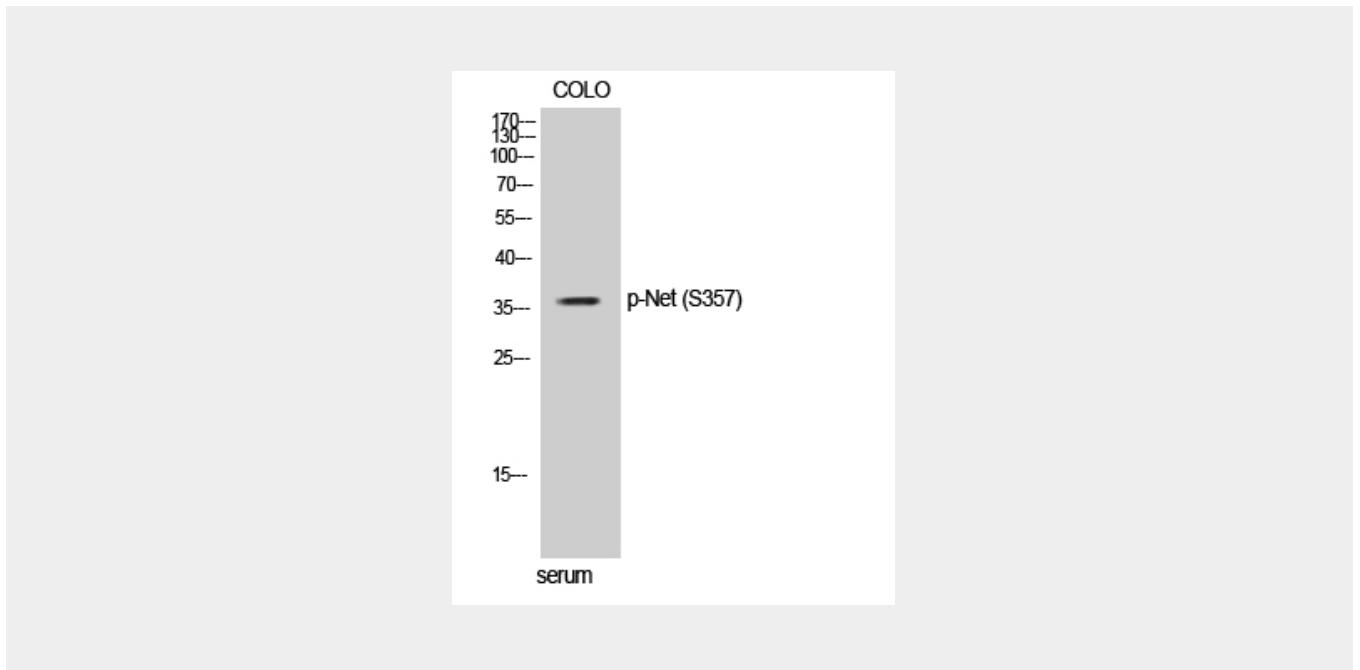
Nucleus.

#### Net (phospho Ser357) Polyclonal Antibody - Protocols

Provided below are standard protocols that you may find useful for product applications.

- [Western Blot](#)
- [Blocking Peptides](#)
- [Dot Blot](#)
- [Immunohistochemistry](#)
- [Immunofluorescence](#)
- [Immunoprecipitation](#)
- [Flow Cytometry](#)
- [Cell Culture](#)

### Net (phospho Ser357) Polyclonal Antibody - Images



### Net (phospho Ser357) Polyclonal Antibody - Background

May be a negative regulator of transcription, but can activate transcription when coexpressed with Ras, Src or Mos. Forms a ternary complex with the serum response factor and the ETS and SRF motifs of the Fos serum response element.