

p120 (phospho Tyr228) Polyclonal Antibody
Catalog # AP67851**Specification****p120 (phospho Tyr228) Polyclonal Antibody - Product Information**

Application	WB
Primary Accession	O60716
Reactivity	Human, Mouse, Rat
Host	Rabbit
Clonality	Polyclonal

p120 (phospho Tyr228) Polyclonal Antibody - Additional Information**Gene ID** 1500**Other Names**

CTNND1; KIAA0384; Catenin delta-1; Cadherin-associated Src substrate; CAS; p120 catenin; p120(ctn); p120(cas)

Dilution

WB~~Western Blot: 1/500 - 1/2000. Immunohistochemistry: 1/100 - 1/300. Immunofluorescence: 1/200 - 1/1000. ELISA: 1/10000. Not yet tested in other applications.

Format

Liquid in PBS containing 50% glycerol, 0.5% BSA and 0.09% (W/V) sodium azide.

Storage Conditions

-20°C

p120 (phospho Tyr228) Polyclonal Antibody - Protein Information**Name** CTNND1**Synonyms** KIAA0384**Function**

Key regulator of cell-cell adhesion that associates with and regulates the cell adhesion properties of both C-, E- and N-cadherins, being critical for their surface stability (PubMed: [14610055](http://www.uniprot.org/citations/14610055), PubMed: [20371349](http://www.uniprot.org/citations/20371349)). Beside cell-cell adhesion, regulates gene transcription through several transcription factors including ZBTB33/Kaiso2 and GLIS2, and the activity of Rho family GTPases and downstream cytoskeletal dynamics (PubMed: [10207085](http://www.uniprot.org/citations/10207085), PubMed: [20371349](http://www.uniprot.org/citations/20371349)). Implicated both in cell transformation by SRC and in ligand-induced receptor signaling through the EGF, PDGF, CSF-1 and ERBB2 receptors (PubMed: [17344476](http://www.uniprot.org/citations/17344476)).

Cellular Location

Cell junction, adherens junction. Cytoplasm. Nucleus. Cell membrane Note=Interaction with GLIS2 promotes nuclear translocation (By similarity). Detected at cell-cell contacts (PubMed:15240885, PubMed:17047063). NANOS1 induces its translocation from sites of cell- cell contact to the cytoplasm (PubMed:17047063). CDH1 enhances cell membrane localization (PubMed:15240885). Isoforms 4A and 1AB are excluded from the nucleus (PubMed:11896187) {ECO:0000250|UniProtKB:P30999, ECO:0000269|PubMed:11896187, ECO:0000269|PubMed:15240885, ECO:0000269|PubMed:17047063} [Isoform 2A]: Nucleus

Tissue Location

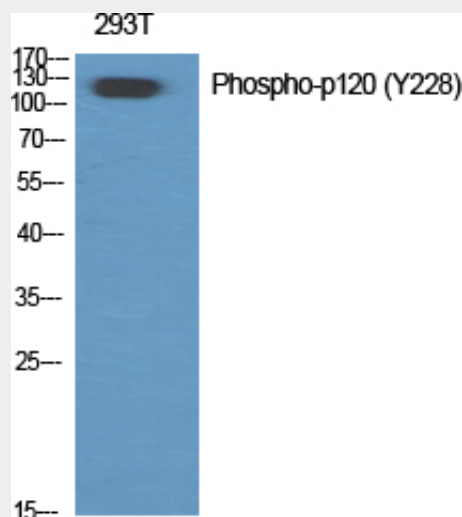
Expressed in vascular endothelium. Melanocytes and melanoma cells primarily express the long isoform 1A, whereas keratinocytes express shorter isoforms, especially 3A. The shortest isoform 4A, is detected in normal keratinocytes and melanocytes, and generally lost from cells derived from squamous cell carcinomas or melanomas. The C-terminal alternatively spliced exon B is present in the p120ctn transcripts in the colon, intestine and prostate, but lost in several tumor tissues derived from these organs

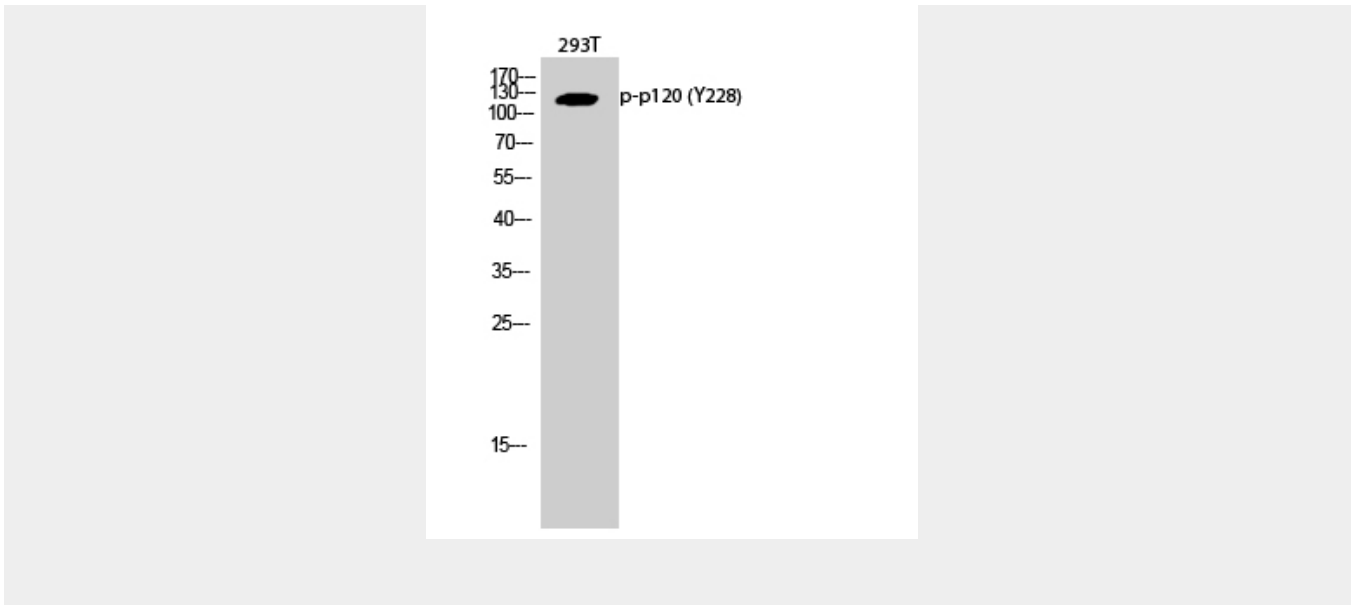
p120 (phospho Tyr228) Polyclonal Antibody - Protocols

Provided below are standard protocols that you may find useful for product applications.

- [Western Blot](#)
- [Blocking Peptides](#)
- [Dot Blot](#)
- [Immunohistochemistry](#)
- [Immunofluorescence](#)
- [Immunoprecipitation](#)
- [Flow Cytometry](#)
- [Cell Culture](#)

p120 (phospho Tyr228) Polyclonal Antibody - Images





p120 (phospho Tyr228) Polyclonal Antibody - Background

Binds to and inhibits the transcriptional repressor ZBTB33, which may lead to activation of target genes of the Wnt signaling pathway (By similarity). Associates with and regulates the cell adhesion properties of both C-, E- and N-cadherins, being critical for their surface stability. Implicated both in cell transformation by SRC and in ligand-induced receptor signaling through the EGF, PDGF, CSF-1 and ERBB2 receptors. Promotes GLIS2 C-terminal cleavage.