

**Gab 1 (phospho Tyr659) Polyclonal Antibody**  
Catalog # AP67839**Specification****Gab 1 (phospho Tyr659) Polyclonal Antibody - Product Information**

Application	WB
Primary Accession	<a href="#">Q13480</a>
Reactivity	Human, Mouse, Rat
Host	Rabbit
Clonality	Polyclonal

**Gab 1 (phospho Tyr659) Polyclonal Antibody - Additional Information****Gene ID** 2549**Other Names**

GAB1; GRB2-associated-binding protein 1; GRB2-associated binder 1; Growth factor receptor bound protein 2-associated protein 1

**Dilution**

WB~~Western Blot: 1/500 - 1/2000. Immunohistochemistry: 1/100 - 1/300. Immunofluorescence: 1/200 - 1/1000. ELISA: 1/5000. Not yet tested in other applications.

**Format**

Liquid in PBS containing 50% glycerol, 0.5% BSA and 0.09% (W/V) sodium azide.

**Storage Conditions**

-20°C

**Gab 1 (phospho Tyr659) Polyclonal Antibody - Protein Information****Name** GAB1**Function**

Adapter protein that plays a role in intracellular signaling cascades triggered by activated receptor-type kinases. Plays a role in FGFR1 signaling. Probably involved in signaling by the epidermal growth factor receptor (EGFR) and the insulin receptor (INSR). Involved in the MET/HGF-signaling pathway (PubMed:&lt;a href="http://www.uniprot.org/citations/29408807" target="\_blank"&gt;29408807&lt;/a&gt;).

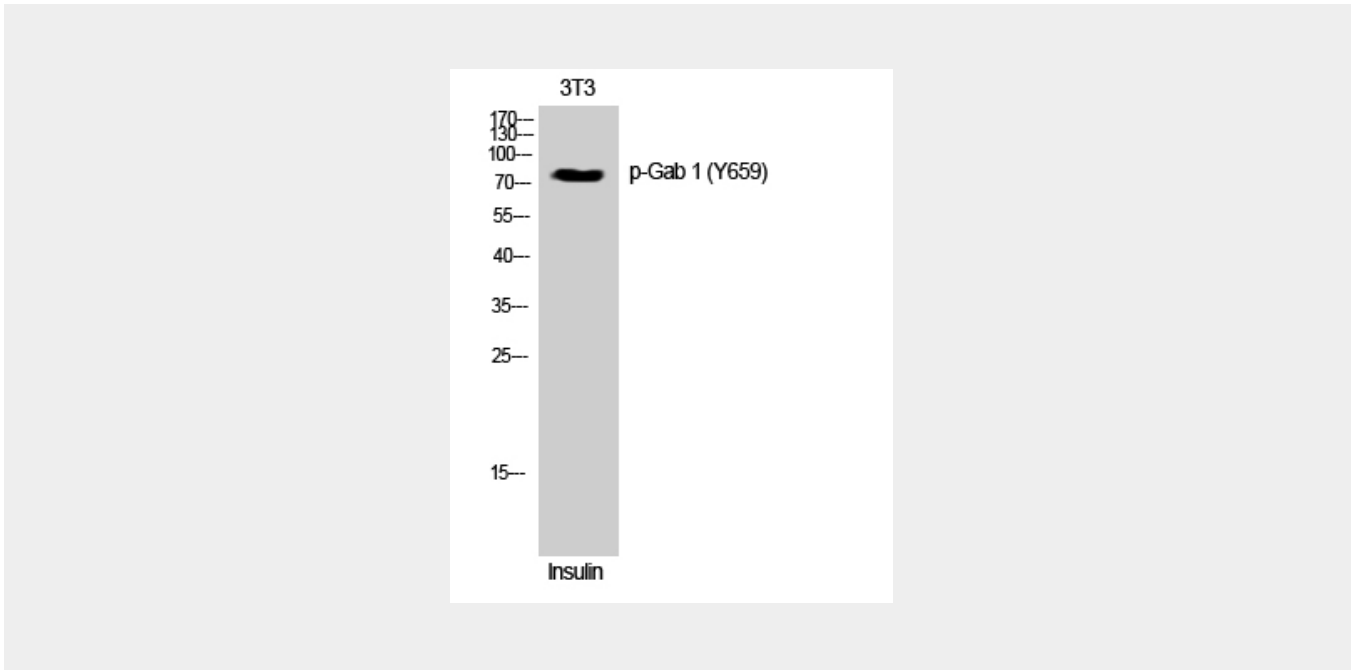
**Gab 1 (phospho Tyr659) Polyclonal Antibody - Protocols**

Provided below are standard protocols that you may find useful for product applications.

- [Western Blot](#)
- [Blocking Peptides](#)

- [Dot Blot](#)
- [Immunohistochemistry](#)
- [Immunofluorescence](#)
- [Immunoprecipitation](#)
- [Flow Cytometry](#)
- [Cell Culture](#)

### **Gab 1 (phospho Tyr659) Polyclonal Antibody - Images**



### **Gab 1 (phospho Tyr659) Polyclonal Antibody - Background**

Adapter protein that plays a role in intracellular signaling cascades triggered by activated receptor-type kinases. Plays a role in FGFR1 signaling. Probably involved in signaling by the epidermal growth factor receptor (EGFR) and the insulin receptor (INSR). Involved in the MET/HGF-signaling pathway (PubMed:29408807).