

Splicing factor 1 (phospho Ser82) Polyclonal Antibody
Catalog # AP67826**Specification****Splicing factor 1 (phospho Ser82) Polyclonal Antibody - Product Information**

Application	WB
Primary Accession	Q15637
Reactivity	Human, Mouse, Monkey
Host	Rabbit
Clonality	Polyclonal

Splicing factor 1 (phospho Ser82) Polyclonal Antibody - Additional Information**Gene ID** 7536**Other Names**

SF1; ZFM1; ZNF162; Splicing factor 1; Mammalian branch point-binding protein; BBP; mBBP; Transcription factor ZFM1; Zinc finger gene in MEN1 locus; Zinc finger protein 162

Dilution

WB~~Western Blot: 1/500 - 1/2000. Immunohistochemistry: 1/100 - 1/300. Immunofluorescence: 1/200 - 1/1000. ELISA: 1/5000. Not yet tested in other applications.

Format

Liquid in PBS containing 50% glycerol, 0.5% BSA and 0.09% (W/V) sodium azide.

Storage Conditions

-20°C

Splicing factor 1 (phospho Ser82) Polyclonal Antibody - Protein Information**Name** SF1**Synonyms** ZFM1, ZNF162**Function**

Necessary for the ATP-dependent first step of spliceosome assembly. Binds to the intron branch point sequence (BPS) 5'-UACUAAC-3' of the pre-mRNA. May act as transcription repressor.

Cellular Location

Nucleus.

Tissue Location

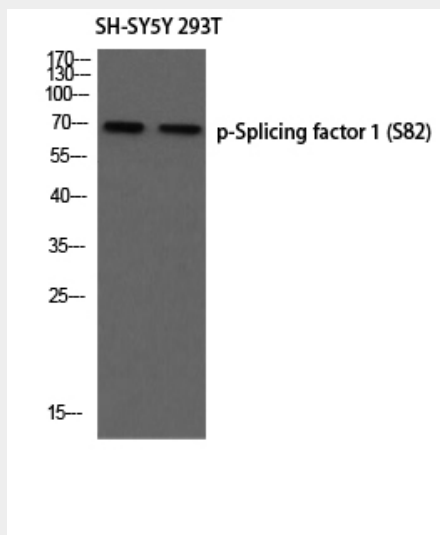
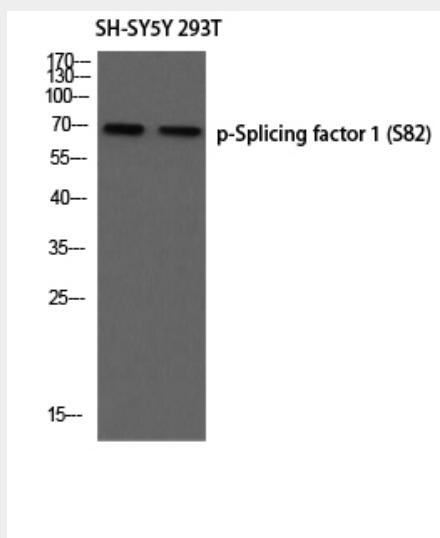
Detected in lung, ovary, adrenal gland, colon, kidney, muscle, pancreas, thyroid, placenta, brain, liver and heart

Splicing factor 1 (phospho Ser82) Polyclonal Antibody - Protocols

Provided below are standard protocols that you may find useful for product applications.

- [Western Blot](#)
- [Blocking Peptides](#)
- [Dot Blot](#)
- [Immunohistochemistry](#)
- [Immunofluorescence](#)
- [Immunoprecipitation](#)
- [Flow Cytometry](#)
- [Cell Culture](#)

Splicing factor 1 (phospho Ser82) Polyclonal Antibody - Images



Splicing factor 1 (phospho Ser82) Polyclonal Antibody - Background

Necessary for the ATP-dependent first step of spliceosome assembly. Binds to the intron branch

point sequence (BPS) 5'-UACU AAC-3' of the pre-mRNA. May act as transcription repressor.