

**EF-2 (phospho Thr56) Polyclonal Antibody**  
Catalog # AP67802**Specification****EF-2 (phospho Thr56) Polyclonal Antibody - Product Information**

|                   |                        |
|-------------------|------------------------|
| Application       | WB                     |
| Primary Accession | <a href="#">P13639</a> |
| Reactivity        | Human, Mouse, Rat      |
| Host              | Rabbit                 |
| Clonality         | Polyclonal             |

**EF-2 (phospho Thr56) Polyclonal Antibody - Additional Information****Gene ID** 1938**Other Names**

EEF2; EF2; Elongation factor 2; EF-2

**Dilution**

WB~~Western Blot: 1/500 - 1/2000. Immunohistochemistry: 1/100 - 1/300. Immunofluorescence: 1/200 - 1/1000. ELISA: 1/10000. Not yet tested in other applications.

**Format**

Liquid in PBS containing 50% glycerol, 0.5% BSA and 0.09% (W/V) sodium azide.

**Storage Conditions**

-20°C

**EF-2 (phospho Thr56) Polyclonal Antibody - Protein Information****Name** EEF2**Synonyms** EF2**Function**

Catalyzes the GTP-dependent ribosomal translocation step during translation elongation (PubMed: [26593721](http://www.uniprot.org/citations/26593721)). During this step, the ribosome changes from the pre-translocational (PRE) to the post-translocational (POST) state as the newly formed A-site-bound peptidyl- tRNA and P-site-bound deacylated tRNA move to the P and E sites, respectively (PubMed: [26593721](http://www.uniprot.org/citations/26593721)). Catalyzes the coordinated movement of the two tRNA molecules, the mRNA and conformational changes in the ribosome (PubMed: [26593721](http://www.uniprot.org/citations/26593721)).

**Cellular Location**

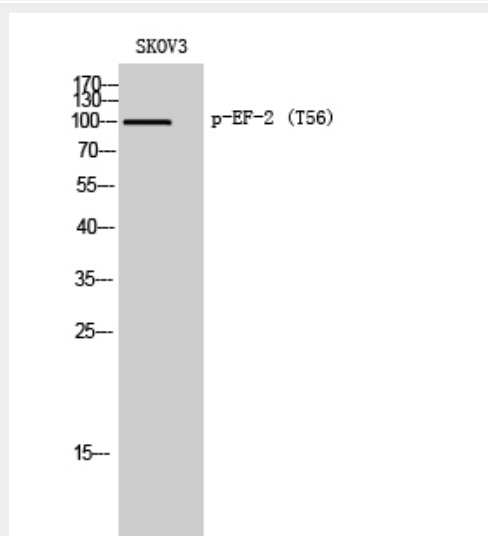
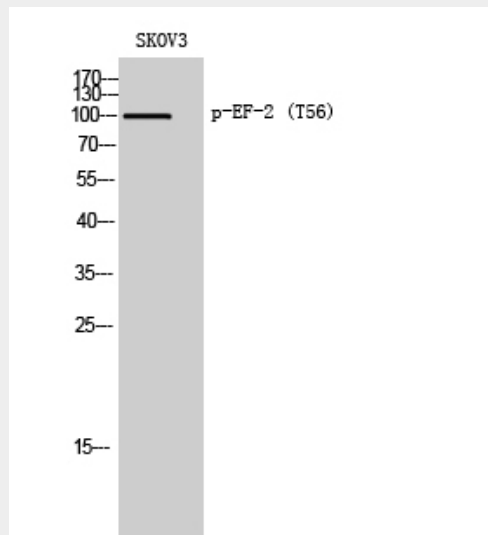
Cytoplasm. Nucleus. Note=Phosphorylation by CSK promotes cleavage and SUMOylation-dependent nuclear translocation of the C- terminal cleavage product.

## EF-2 (phospho Thr56) Polyclonal Antibody - Protocols

Provided below are standard protocols that you may find useful for product applications.

- [Western Blot](#)
- [Blocking Peptides](#)
- [Dot Blot](#)
- [Immunohistochemistry](#)
- [Immunofluorescence](#)
- [Immunoprecipitation](#)
- [Flow Cytometry](#)
- [Cell Culture](#)

## EF-2 (phospho Thr56) Polyclonal Antibody - Images



## EF-2 (phospho Thr56) Polyclonal Antibody - Background

Catalyzes the GTP-dependent ribosomal translocation step during translation elongation. During this step, the ribosome changes from the pre-translocational (PRE) to the post-translocational (POST) state as the newly formed A-site-bound peptidyl-tRNA and P-site-bound deacylated tRNA move to the P and E sites, respectively. Catalyzes the coordinated movement of the two tRNA molecules, the mRNA and conformational changes in the ribosome.