

**Crk-L (phospho Tyr207) Polyclonal Antibody**  
Catalog # AP67801**Specification**

---

**Crk-L (phospho Tyr207) Polyclonal Antibody - Product Information**

Application	WB
Primary Accession	<a href="#">P46109</a>
Reactivity	Human, Mouse, Rat, Monkey
Host	Rabbit
Clonality	Polyclonal

**Crk-L (phospho Tyr207) Polyclonal Antibody - Additional Information****Gene ID** 1399**Other Names**

CRKL; Crk-like protein

**Dilution**

WB~Western Blot: 1/500 - 1/2000. Immunohistochemistry: 1/100 - 1/300. Immunofluorescence: 1/200 - 1/1000. ELISA: 1/5000. Not yet tested in other applications.

**Format**

Liquid in PBS containing 50% glycerol, 0.5% BSA and 0.09% (W/V) sodium azide.

**Storage Conditions**

-20°C

**Crk-L (phospho Tyr207) Polyclonal Antibody - Protein Information****Name** CRKL**Function**

May mediate the transduction of intracellular signals.

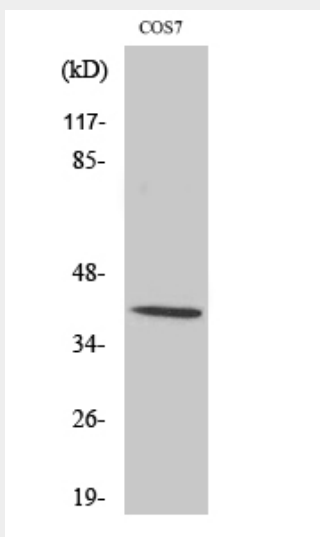
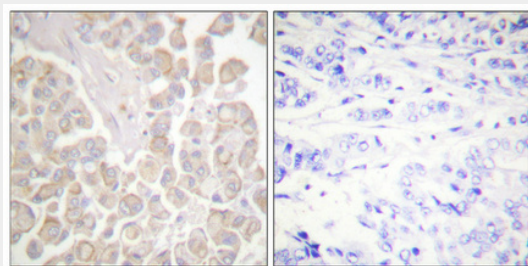
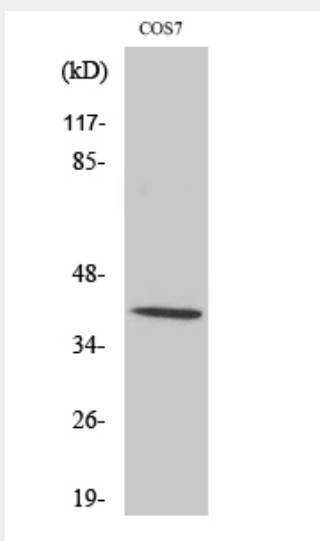
**Crk-L (phospho Tyr207) Polyclonal Antibody - Protocols**

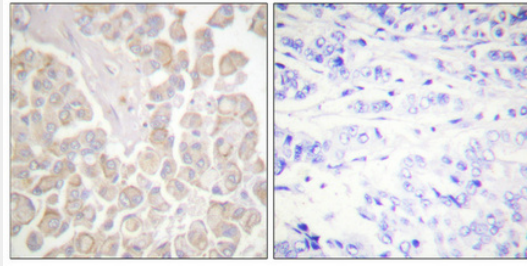
Provided below are standard protocols that you may find useful for product applications.

- [Western Blot](#)
- [Blocking Peptides](#)
- [Dot Blot](#)
- [Immunohistochemistry](#)
- [Immunofluorescence](#)
- [Immunoprecipitation](#)
- [Flow Cytometry](#)

- [Cell Culture](#)

### Crk-L (phospho Tyr207) Polyclonal Antibody - Images





### **Crk-L (phospho Tyr207) Polyclonal Antibody - Background**

May mediate the transduction of intracellular signals.