

14-3-3 ζ (phospho Ser58) Polyclonal Antibody
Catalog # AP67785**Specification****14-3-3 ζ (phospho Ser58) Polyclonal Antibody - Product Information**

Application	WB
Primary Accession	P63104
Reactivity	Human, Mouse, Rat
Host	Rabbit
Clonality	Polyclonal

14-3-3 ζ (phospho Ser58) Polyclonal Antibody - Additional Information

Gene ID 7534

Other Names

YWHAZ; 14-3-3 protein zeta/delta; Protein kinase C inhibitor protein 1; KCIP-1

Dilution

WB~Western Blot: 1/500 - 1/2000. Immunohistochemistry: 1/100 - 1/300. Immunofluorescence: 1/200 - 1/1000. ELISA: 1/40000. Not yet tested in other applications.

Format

Liquid in PBS containing 50% glycerol, 0.5% BSA and 0.09% (W/V) sodium azide.

Storage Conditions

-20°C

14-3-3 ζ (phospho Ser58) Polyclonal Antibody - Protein Information

Name YWHAZ

Function

Adapter protein implicated in the regulation of a large spectrum of both general and specialized signaling pathways (PubMed: [14578935](http://www.uniprot.org/citations/14578935), PubMed: [15071501](http://www.uniprot.org/citations/15071501), PubMed: [15644438](http://www.uniprot.org/citations/15644438), PubMed: [16376338](http://www.uniprot.org/citations/16376338), PubMed: [16959763](http://www.uniprot.org/citations/16959763), PubMed: [31024343](http://www.uniprot.org/citations/31024343), PubMed: [9360956](http://www.uniprot.org/citations/9360956)). Binds to a large number of partners, usually by recognition of a phosphoserine or phosphothreonine motif (PubMed: [35662396](http://www.uniprot.org/citations/35662396)). Binding generally results in the modulation of the activity of the binding partner (PubMed: [35662396](http://www.uniprot.org/citations/35662396)). Promotes cytosolic retention and inactivation of TFEB transcription factor by binding to phosphorylated TFEB (PubMed: [35662396](http://www.uniprot.org/citations/35662396)).

Induces ARHGEF7 activity on RAC1 as well as lamellipodia and membrane ruffle formation (PubMed:16959763). In neurons, regulates spine maturation through the modulation of ARHGEF7 activity (By similarity).

Cellular Location

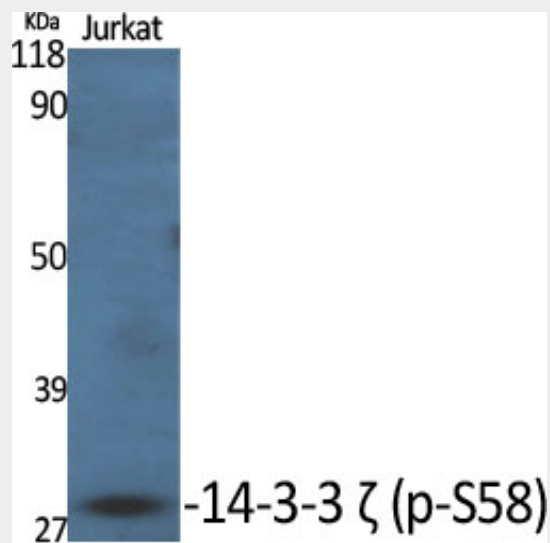
Cytoplasm. Melanosome. Note=Located to stage I to stage IV melanosomes.

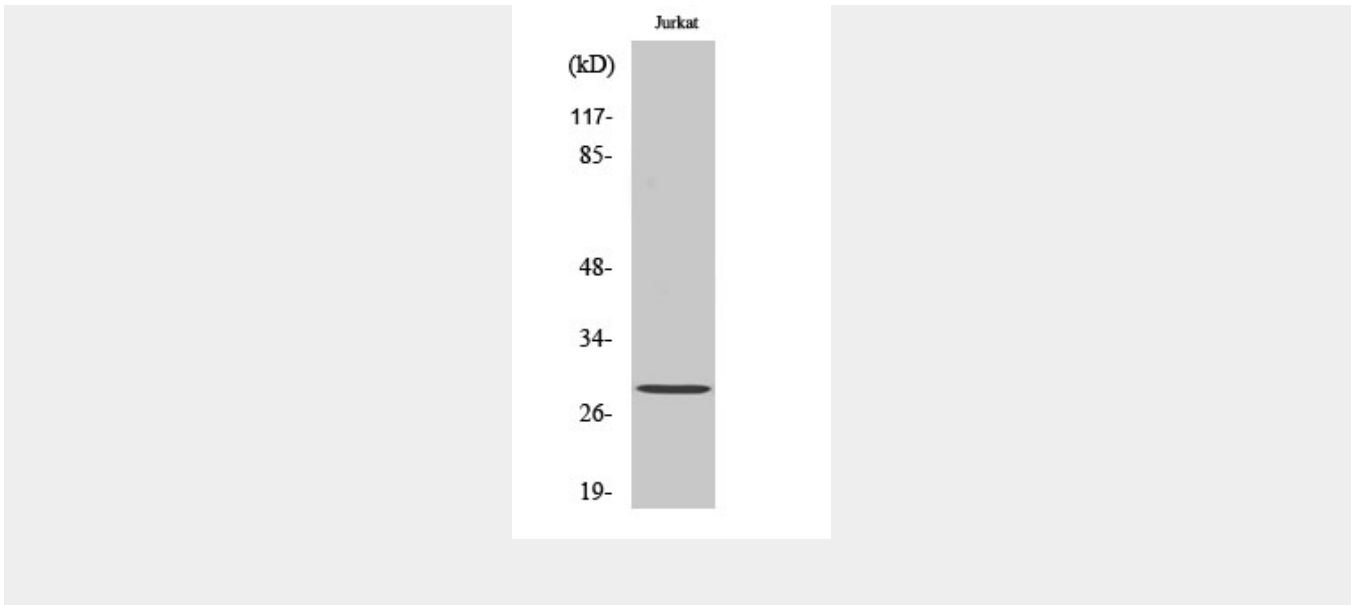
14-3-3 ζ (phospho Ser58) Polyclonal Antibody - Protocols

Provided below are standard protocols that you may find useful for product applications.

- [Western Blot](#)
- [Blocking Peptides](#)
- [Dot Blot](#)
- [Immunohistochemistry](#)
- [Immunofluorescence](#)
- [Immunoprecipitation](#)
- [Flow Cytometry](#)
- [Cell Culture](#)

14-3-3 ζ (phospho Ser58) Polyclonal Antibody - Images





14-3-3 ζ (phospho Ser58) Polyclonal Antibody - Background

Adapter protein implicated in the regulation of a large spectrum of both general and specialized signaling pathways. Binds to a large number of partners, usually by recognition of a phosphoserine or phosphothreonine motif. Binding generally results in the modulation of the activity of the binding partner.