

p16 (phospho Ser326) Polyclonal Antibody
Catalog # AP67759**Specification**

p16 (phospho Ser326) Polyclonal Antibody - Product Information

Application	WB
Primary Accession	P42771
Reactivity	Human
Host	Rabbit
Clonality	Polyclonal

p16 (phospho Ser326) Polyclonal Antibody - Additional Information**Gene ID** 1029**Other Names**

CDKN2A; CDKN2; MTS1; Cyclin-dependent kinase inhibitor 2A; isoforms 1/2/3; Cyclin-dependent kinase 4 inhibitor A; CDK4I; Multiple tumor suppressor 1; MTS-1; p16-INK4a; p16-INK4; p16INK4A

Dilution

WB~~Western Blot: 1/500 - 1/2000. Immunohistochemistry: 1/100 - 1/300. ELISA: 1/5000. Not yet tested in other applications.

Format

Liquid in PBS containing 50% glycerol, 0.5% BSA and 0.09% (W/V) sodium azide.

Storage Conditions

-20°C

p16 (phospho Ser326) Polyclonal Antibody - Protein Information**Name** CDKN2A ([HGNC:1787](#))**Synonyms** CDKN2, MTS1**Function**

Acts as a negative regulator of the proliferation of normal cells by interacting strongly with CDK4 and CDK6. This inhibits their ability to interact with cyclins D and to phosphorylate the retinoblastoma protein.

Cellular Location

Cytoplasm. Nucleus

Tissue Location

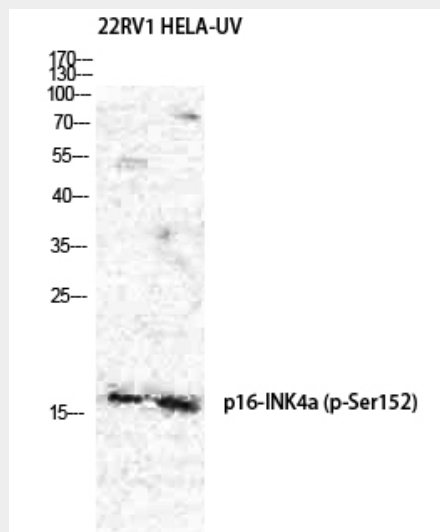
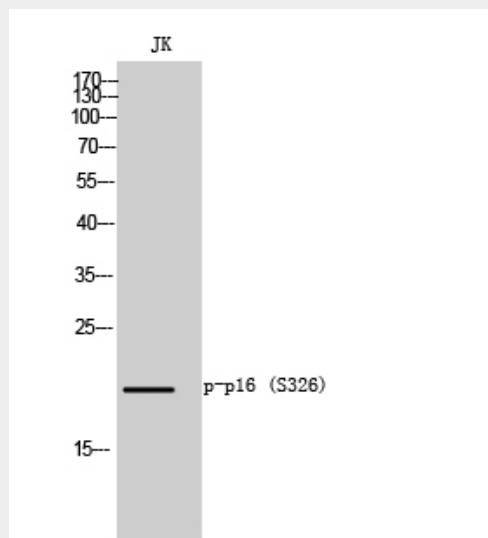
Widely expressed but not detected in brain or skeletal muscle. Isoform 3 is pancreas-specific

p16 (phospho Ser326) Polyclonal Antibody - Protocols

Provided below are standard protocols that you may find useful for product applications.

- [Western Blot](#)
- [Blocking Peptides](#)
- [Dot Blot](#)
- [Immunohistochemistry](#)
- [Immunofluorescence](#)
- [Immunoprecipitation](#)
- [Flow Cytometry](#)
- [Cell Culture](#)

p16 (phospho Ser326) Polyclonal Antibody - Images



p16 (phospho Ser326) Polyclonal Antibody - Background

Acts as a negative regulator of the proliferation of normal cells by interacting strongly with CDK4

and CDK6. This inhibits their ability to interact with cyclins D and to phosphorylate the retinoblastoma protein.