

**CtBP1 (phospho Ser422) Polyclonal Antibody**  
Catalog # AP67747**Specification**

---

**CtBP1 (phospho Ser422) Polyclonal Antibody - Product Information**

Application	WB
Primary Accession	<a href="#">Q13363</a>
Reactivity	Human, Mouse, Rat
Host	Rabbit
Clonality	Polyclonal

**CtBP1 (phospho Ser422) Polyclonal Antibody - Additional Information****Gene ID** 1487**Other Names**

CTBP1; CTBP; C-terminal-binding protein 1; CtBP1

**Dilution**

WB~~Western Blot: 1/500 - 1/2000. Immunohistochemistry: 1/100 - 1/300. ELISA: 1/10000. Not yet tested in other applications.

**Format**

Liquid in PBS containing 50% glycerol, 0.5% BSA and 0.09% (W/V) sodium azide.

**Storage Conditions**

-20°C

**CtBP1 (phospho Ser422) Polyclonal Antibody - Protein Information****Name** CTBP1**Synonyms** CTBP**Function**

Corepressor targeting diverse transcription regulators such as GLIS2 or BCL6. Has dehydrogenase activity. Involved in controlling the equilibrium between tubular and stacked structures in the Golgi complex. Functions in brown adipose tissue (BAT) differentiation.

**Cellular Location**

Cytoplasm. Nucleus

**Tissue Location**

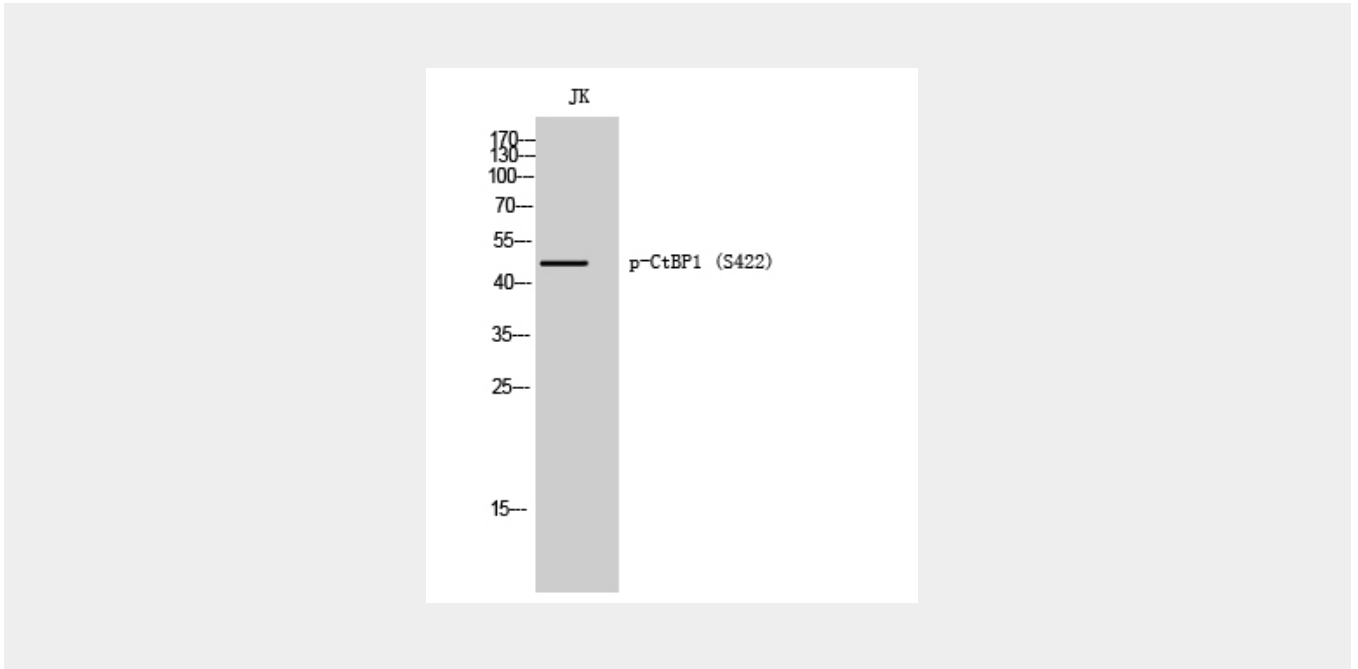
Expressed in germinal center B-cells.

**CtBP1 (phospho Ser422) Polyclonal Antibody - Protocols**

Provided below are standard protocols that you may find useful for product applications.

- [Western Blot](#)
- [Blocking Peptides](#)
- [Dot Blot](#)
- [Immunohistochemistry](#)
- [Immunofluorescence](#)
- [Immunoprecipitation](#)
- [Flow Cytometry](#)
- [Cell Culture](#)

### **CtBP1 (phospho Ser422) Polyclonal Antibody - Images**



### **CtBP1 (phospho Ser422) Polyclonal Antibody - Background**

Corepressor targeting diverse transcription regulators such as GLIS2 or BCL6. Has dehydrogenase activity. Involved in controlling the equilibrium between tubular and stacked structures in the Golgi complex. Functions in brown adipose tissue (BAT) differentiation.