

**PI 3-kinase p85 $\alpha$  (phospho Tyr607) Polyclonal Antibody**  
Catalog # AP67697**Specification****PI 3-kinase p85 $\alpha$  (phospho Tyr607) Polyclonal Antibody - Product Information**

Application	IF
Primary Accession	<a href="#">P27986</a>
Reactivity	Human, Mouse, Rat, Chicken
Host	Rabbit
Clonality	Polyclonal

**PI 3-kinase p85 $\alpha$  (phospho Tyr607) Polyclonal Antibody - Additional Information**

Gene ID 5295

**Other Names**

PIK3R1; GRB1; Phosphatidylinositol 3-kinase regulatory subunit alpha; PI3-kinase regulatory subunit alpha; PI3K regulatory subunit alpha; PtdIns-3-kinase regulatory subunit alpha; Phosphatidylinositol 3-kinase 85 kDa regulatory subunit alpha

**Dilution**

IF~IF: 1:50-200 Western Blot: 1/500 - 1/2000. Immunohistochemistry: 1/100 - 1/300. ELISA: 1/10000. Not yet tested in other applications.

**Format**

Liquid in PBS containing 50% glycerol, 0.5% BSA and 0.09% (W/V) sodium azide.

**Storage Conditions**

-20°C

**PI 3-kinase p85 $\alpha$  (phospho Tyr607) Polyclonal Antibody - Protein Information**

Name PIK3R1

Synonyms GRB1

**Function**

Binds to activated (phosphorylated) protein-Tyr kinases, through its SH2 domain, and acts as an adapter, mediating the association of the p110 catalytic unit to the plasma membrane. Necessary for the insulin-stimulated increase in glucose uptake and glycogen synthesis in insulin-sensitive tissues. Plays an important role in signaling in response to FGFR1, FGFR2, FGFR3, FGFR4, KITLG/SCF, KIT, PDGFRA and PDGFRB. Likewise, plays a role in ITGB2 signaling (PubMed: [17626883](http://www.uniprot.org/citations/17626883), PubMed: [19805105](http://www.uniprot.org/citations/19805105), PubMed: [7518429](http://www.uniprot.org/citations/7518429)). Modulates the cellular response to ER stress by promoting nuclear translocation of XBP1 isoform 2 in a ER stress- and/or insulin-dependent manner during metabolic overloading in the liver and hence plays a role in glucose tolerance improvement (PubMed: [20348923](http://www.uniprot.org/citations/20348923))

target="\_blank">20348923</a>).

### Tissue Location

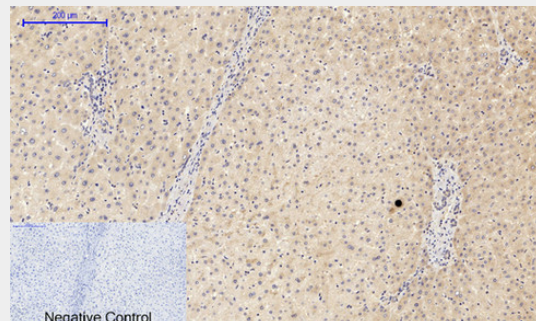
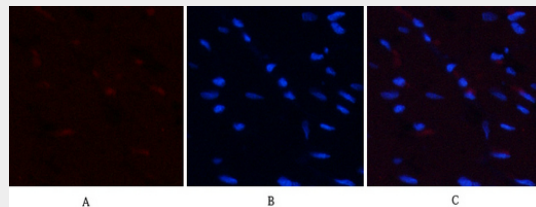
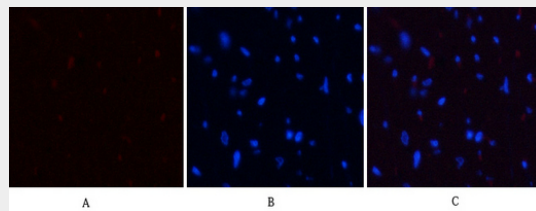
Isoform 2 is expressed in skeletal muscle and brain, and at lower levels in kidney and cardiac muscle. Isoform 2 and isoform 4 are present in skeletal muscle (at protein level)

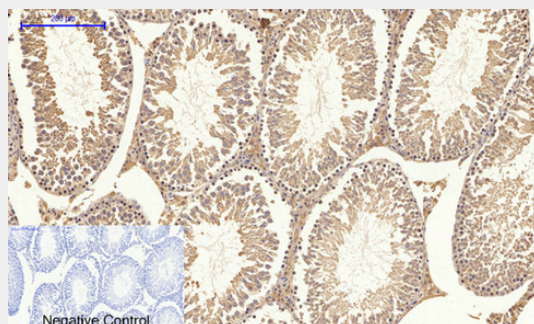
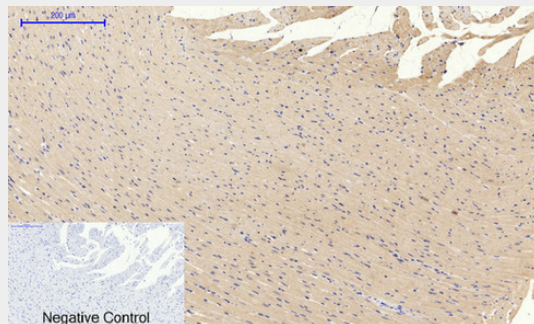
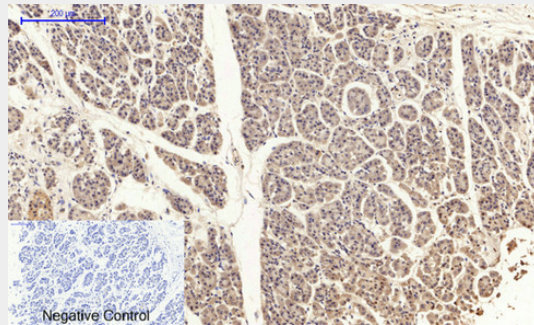
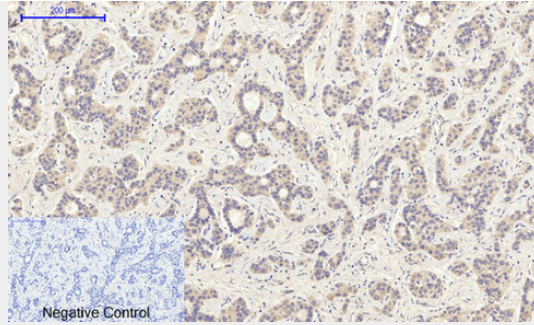
### PI 3-kinase p85 $\alpha$ (phospho Tyr607) Polyclonal Antibody - Protocols

Provided below are standard protocols that you may find useful for product applications.

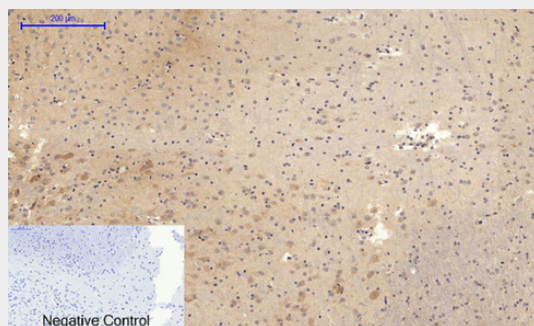
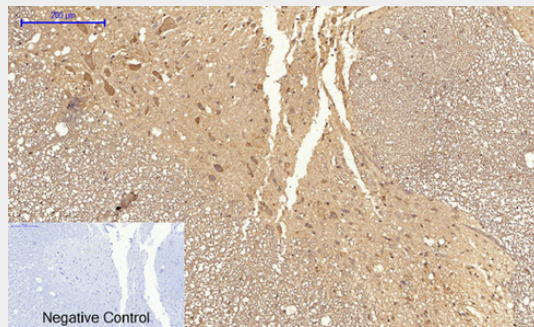
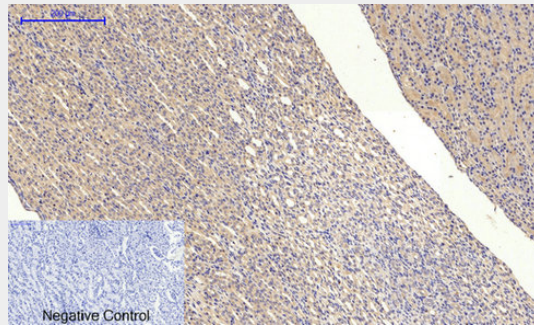
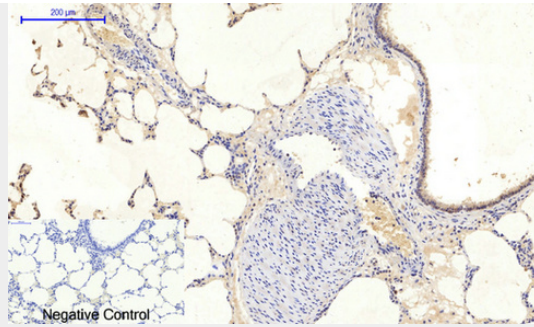
- [Western Blot](#)
- [Blocking Peptides](#)
- [Dot Blot](#)
- [Immunohistochemistry](#)
- [Immunofluorescence](#)
- [Immunoprecipitation](#)
- [Flow Cytometry](#)
- [Cell Culture](#)

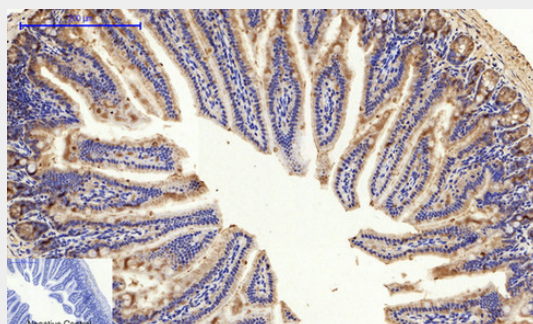
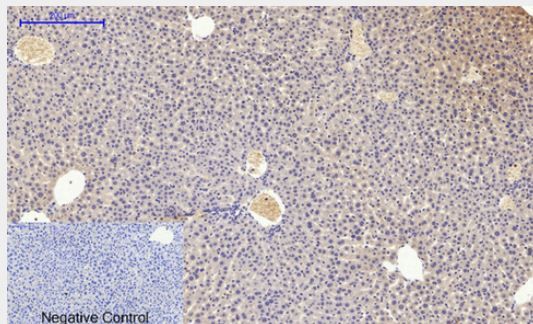
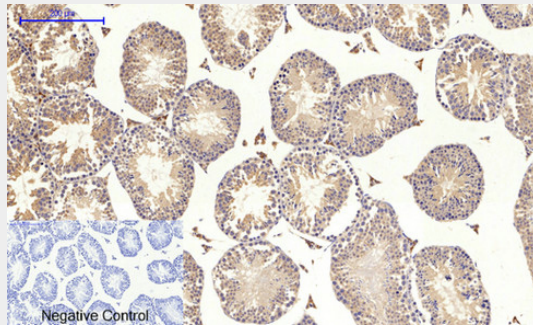
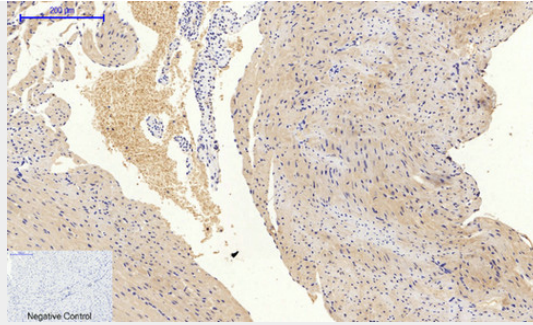
### PI 3-kinase p85 $\alpha$ (phospho Tyr607) Polyclonal Antibody - Images



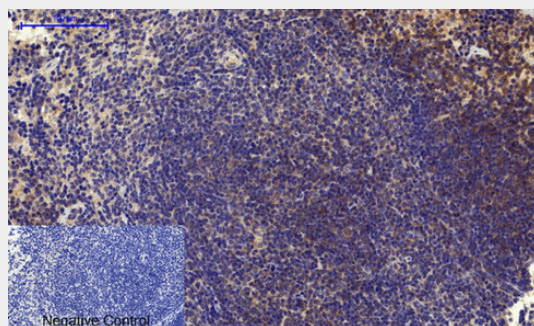
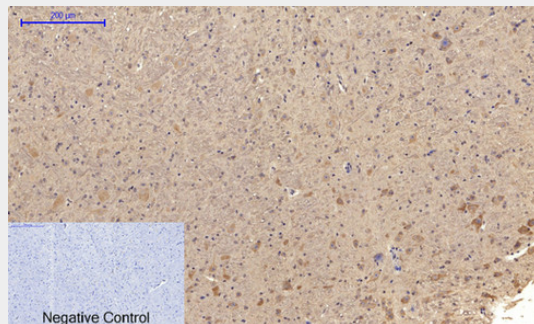
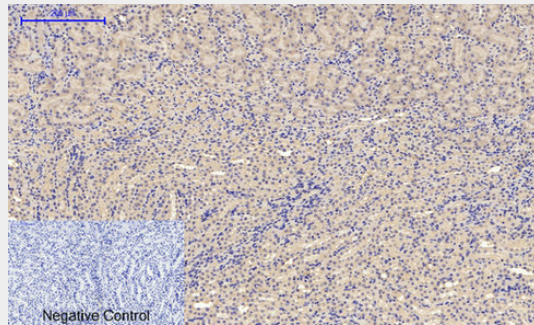
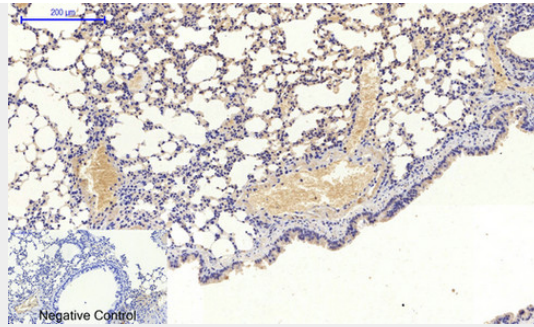


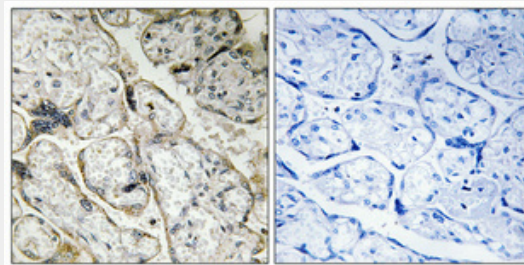
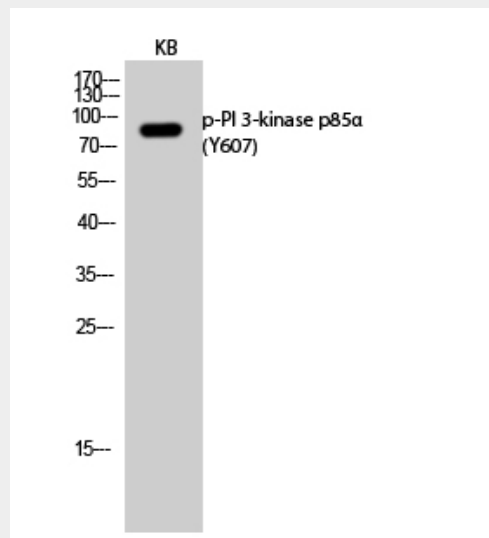
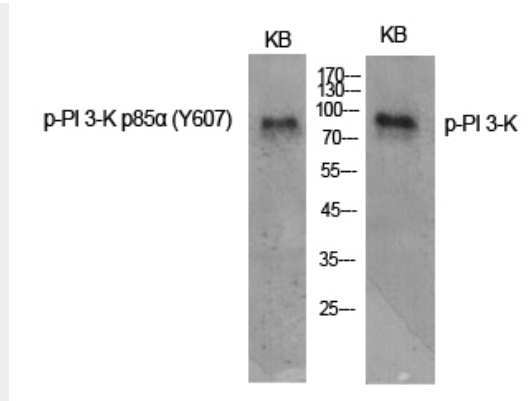












### PI 3-kinase p85 $\alpha$ (phospho Tyr607) Polyclonal Antibody - Background

Binds to activated (phosphorylated) protein-Tyr kinases, through its SH2 domain, and acts as an adapter, mediating the association of the p110 catalytic unit to the plasma membrane. Necessary for the insulin-stimulated increase in glucose uptake and glycogen synthesis in insulin-sensitive tissues. Plays an important role in signaling in response to FGFR1, FGFR2, FGFR3, FGFR4, KITLG/SCF, KIT, PDGFRA and PDGFRB. Likewise, plays a role in ITGB2 signaling (PubMed:17626883, PubMed:19805105, PubMed:7518429). Modulates the cellular response to ER stress by promoting nuclear translocation of XBP1 isoform 2 in a ER stress- and/or insulin-dependent manner during metabolic overloading in the liver and hence plays a role in glucose tolerance improvement (PubMed:20348923).