

PFK-2 car (phospho Ser483) Polyclonal Antibody
Catalog # AP67643

Specification

PFK-2 car (phospho Ser483) Polyclonal Antibody - Product Information

Application	WB
Primary Accession	O60825
Reactivity	Human, Mouse, Rat
Host	Rabbit
Clonality	Polyclonal

PFK-2 car (phospho Ser483) Polyclonal Antibody - Additional Information

Gene ID 5208

Other Names

PFKFB2; 6-phosphofructo-2-kinase/fructose-2; 6-bisphosphatase 2; 6PF-2-K/Fru-2, 6-P2ase 2; PFK/FBPase 2; 6PF-2-K/Fru-2, 6-P2ase heart-type isozyme

Dilution

WB~~Western Blot: 1/500 - 1/2000. Immunohistochemistry: 1/100 - 1/300. ELISA: 1/40000. Not yet tested in other applications.

Format

Liquid in PBS containing 50% glycerol, 0.5% BSA and 0.09% (W/V) sodium azide.

Storage Conditions

-20°C

PFK-2 car (phospho Ser483) Polyclonal Antibody - Protein Information

Name PFKFB2 ([HGNC:8873](#))

Function

Synthesis and degradation of fructose 2,6-bisphosphate.

Tissue Location

Heart.

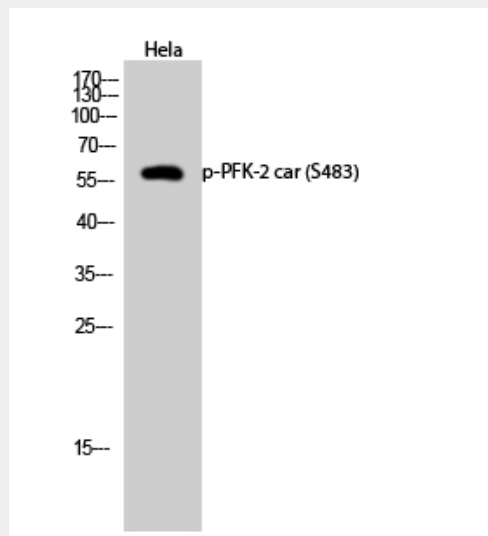
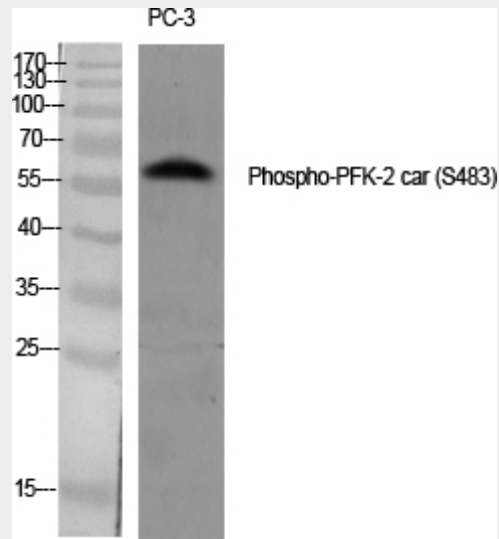
PFK-2 car (phospho Ser483) Polyclonal Antibody - Protocols

Provided below are standard protocols that you may find useful for product applications.

- [Western Blot](#)
- [Blocking Peptides](#)
- [Dot Blot](#)

- [Immunohistochemistry](#)
- [Immunofluorescence](#)
- [Immunoprecipitation](#)
- [Flow Cytometry](#)
- [Cell Culture](#)

PFK-2 car (phospho Ser483) Polyclonal Antibody - Images



PFK-2 car (phospho Ser483) Polyclonal Antibody - Background

Synthesis and degradation of fructose 2,6-bisphosphate.