

**p23 (phospho Ser113) Polyclonal Antibody**  
Catalog # AP67605**Specification****p23 (phospho Ser113) Polyclonal Antibody - Product Information**

Application	WB
Primary Accession	<a href="#">Q15185</a>
Reactivity	Human, Mouse, Rat
Host	Rabbit
Clonality	Polyclonal

**p23 (phospho Ser113) Polyclonal Antibody - Additional Information****Gene ID** 10728**Other Names**

PTGES3; P23; TEBP; Prostaglandin E synthase 3; Cytosolic prostaglandin E2 synthase; cPGES; Hsp90 co-chaperone; Progesterone receptor complex p23; Telomerase-binding protein p23

**Dilution**

WB~~Western Blot: 1/500 - 1/2000. Immunohistochemistry: 1/100 - 1/300. ELISA: 1/10000. Not yet tested in other applications.

**Format**

Liquid in PBS containing 50% glycerol, 0.5% BSA and 0.09% (W/V) sodium azide.

**Storage Conditions**

-20°C

**p23 (phospho Ser113) Polyclonal Antibody - Protein Information****Name** PTGES3**Synonyms** P23, TEBP**Function**

Cytosolic prostaglandin synthase that catalyzes the oxidoreduction of prostaglandin endoperoxide H2 (PGH2) to prostaglandin E2 (PGE2) (PubMed: [10922363](http://www.uniprot.org/citations/10922363)). Molecular chaperone that localizes to genomic response elements in a hormone-dependent manner and disrupts receptor-mediated transcriptional activation, by promoting disassembly of transcriptional regulatory complexes (PubMed: [11274138](http://www.uniprot.org/citations/11274138), PubMed: [12077419](http://www.uniprot.org/citations/12077419)). Facilitates HIF alpha proteins hydroxylation via interaction with EGLN1/PHD2, leading to recruit EGLN1/PHD2 to the HSP90 pathway (PubMed: [24711448](http://www.uniprot.org/citations/24711448)).

**Cellular Location**

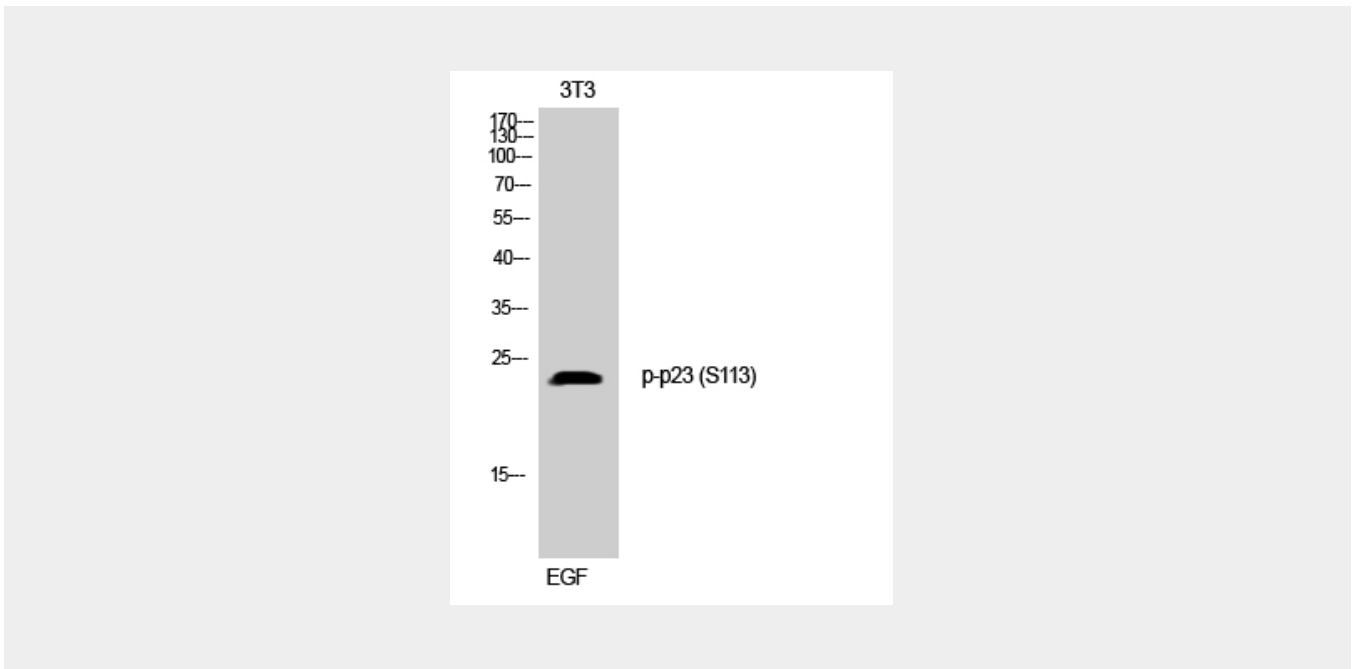
Cytoplasm {ECO:0000250|UniProtKB:Q3ZBF7}.

### p23 (phospho Ser113) Polyclonal Antibody - Protocols

Provided below are standard protocols that you may find useful for product applications.

- [Western Blot](#)
- [Blocking Peptides](#)
- [Dot Blot](#)
- [Immunohistochemistry](#)
- [Immunofluorescence](#)
- [Immunoprecipitation](#)
- [Flow Cytometry](#)
- [Cell Culture](#)

### p23 (phospho Ser113) Polyclonal Antibody - Images



### p23 (phospho Ser113) Polyclonal Antibody - Background

Cytosolic prostaglandin synthase that catalyzes the oxidoreduction of prostaglandin endoperoxide H<sub>2</sub> (PGH<sub>2</sub>) to prostaglandin E<sub>2</sub> (PGE<sub>2</sub>) (PubMed:10922363). Molecular chaperone that localizes to genomic response elements in a hormone-dependent manner and disrupts receptor-mediated transcriptional activation, by promoting disassembly of transcriptional regulatory complexes (PubMed:11274138, PubMed:12077419). Facilitates HIF alpha proteins hydroxylation via interaction with EGLN1/PHD2, leading to recruit EGLN1/PHD2 to the HSP90 pathway (PubMed:24711448).