

Glycogen Synthase 1 (phospho Ser645) Polyclonal Antibody
Catalog # AP67565**Specification**

Glycogen Synthase 1 (phospho Ser645) Polyclonal Antibody - Product Information

Application	WB
Primary Accession	P13807
Reactivity	Human, Mouse, Rat
Host	Rabbit
Clonality	Polyclonal

Glycogen Synthase 1 (phospho Ser645) Polyclonal Antibody - Additional Information**Gene ID** 2997**Other Names**

GYS1; GYS; Glycogen [starch] synthase; muscle

Dilution

WB~~Western Blot: 1/500 - 1/2000. Immunohistochemistry: 1/100 - 1/300. ELISA: 1/5000. Not yet tested in other applications.

Format

Liquid in PBS containing 50% glycerol, 0.5% BSA and 0.09% (W/V) sodium azide.

Storage Conditions

-20°C

Glycogen Synthase 1 (phospho Ser645) Polyclonal Antibody - Protein Information**Name** GYS1 ([HGNC:4706](#))**Synonyms** GYS**Function**

Glycogen synthase participates in the glycogen biosynthetic process along with glycogenin and glycogen branching enzyme. Extends the primer composed of a few glucose units formed by glycogenin by adding new glucose units to it. In this context, glycogen synthase transfers the glycosyl residue from UDP-Glc to the non-reducing end of alpha-1,4-glucan.

Tissue Location

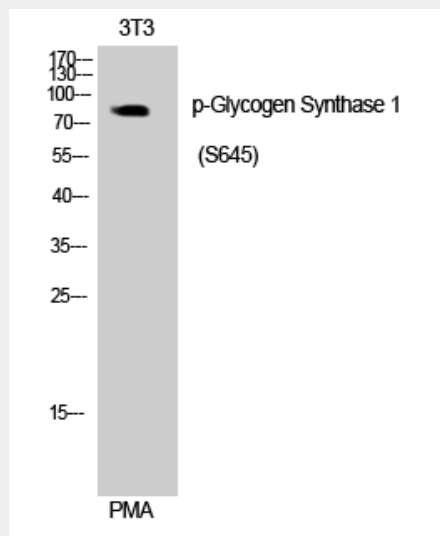
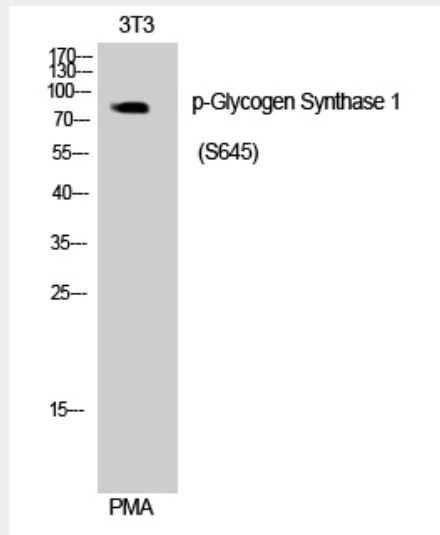
Expressed in skeletal muscle and most other cell types where glycogen is present.

Glycogen Synthase 1 (phospho Ser645) Polyclonal Antibody - Protocols

Provided below are standard protocols that you may find useful for product applications.

- [Western Blot](#)
- [Blocking Peptides](#)
- [Dot Blot](#)
- [Immunohistochemistry](#)
- [Immunofluorescence](#)
- [Immunoprecipitation](#)
- [Flow Cytometry](#)
- [Cell Culture](#)

Glycogen Synthase 1 (phospho Ser645) Polyclonal Antibody - Images



Glycogen Synthase 1 (phospho Ser645) Polyclonal Antibody - Background

Transfers the glycosyl residue from UDP-Glc to the non-reducing end of alpha-1,4-glucan.