

PLC γ 2 (phospho Tyr753) Polyclonal Antibody
Catalog # AP67540**Specification**

PLC γ 2 (phospho Tyr753) Polyclonal Antibody - Product Information

Application	WB
Primary Accession	P16885
Reactivity	Human, Mouse, Rat
Host	Rabbit
Clonality	Polyclonal

PLC γ 2 (phospho Tyr753) Polyclonal Antibody - Additional Information**Gene ID** 5336**Other Names**

PLCG2; 1-phosphatidylinositol 4; 5-bisphosphate phosphodiesterase gamma-2; Phosphoinositide phospholipase C-gamma-2; Phospholipase C-IV; PLC-IV; Phospholipase C-gamma-2; PLC-gamma-2

Dilution

WB~~Western Blot: 1/500 - 1/2000. Immunohistochemistry: 1/100 - 1/300. ELISA: 1/5000. Not yet tested in other applications.

Format

Liquid in PBS containing 50% glycerol, 0.5% BSA and 0.09% (W/V) sodium azide.

Storage Conditions

-20°C

PLC γ 2 (phospho Tyr753) Polyclonal Antibody - Protein Information**Name** PLCG2 ([HGNC:9066](#))**Function**

The production of the second messenger molecules diacylglycerol (DAG) and inositol 1,4,5-trisphosphate (IP3) is mediated by activated phosphatidylinositol-specific phospholipase C enzymes. It is a crucial enzyme in transmembrane signaling.

Cellular Location

Membrane raft {ECO:0000250|UniProtKB:Q8CIH5}.

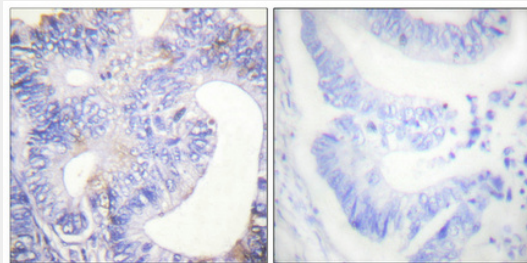
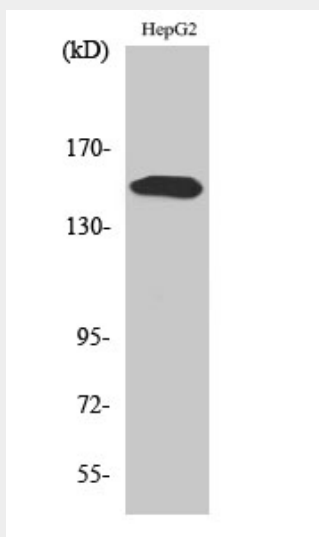
PLC γ 2 (phospho Tyr753) Polyclonal Antibody - Protocols

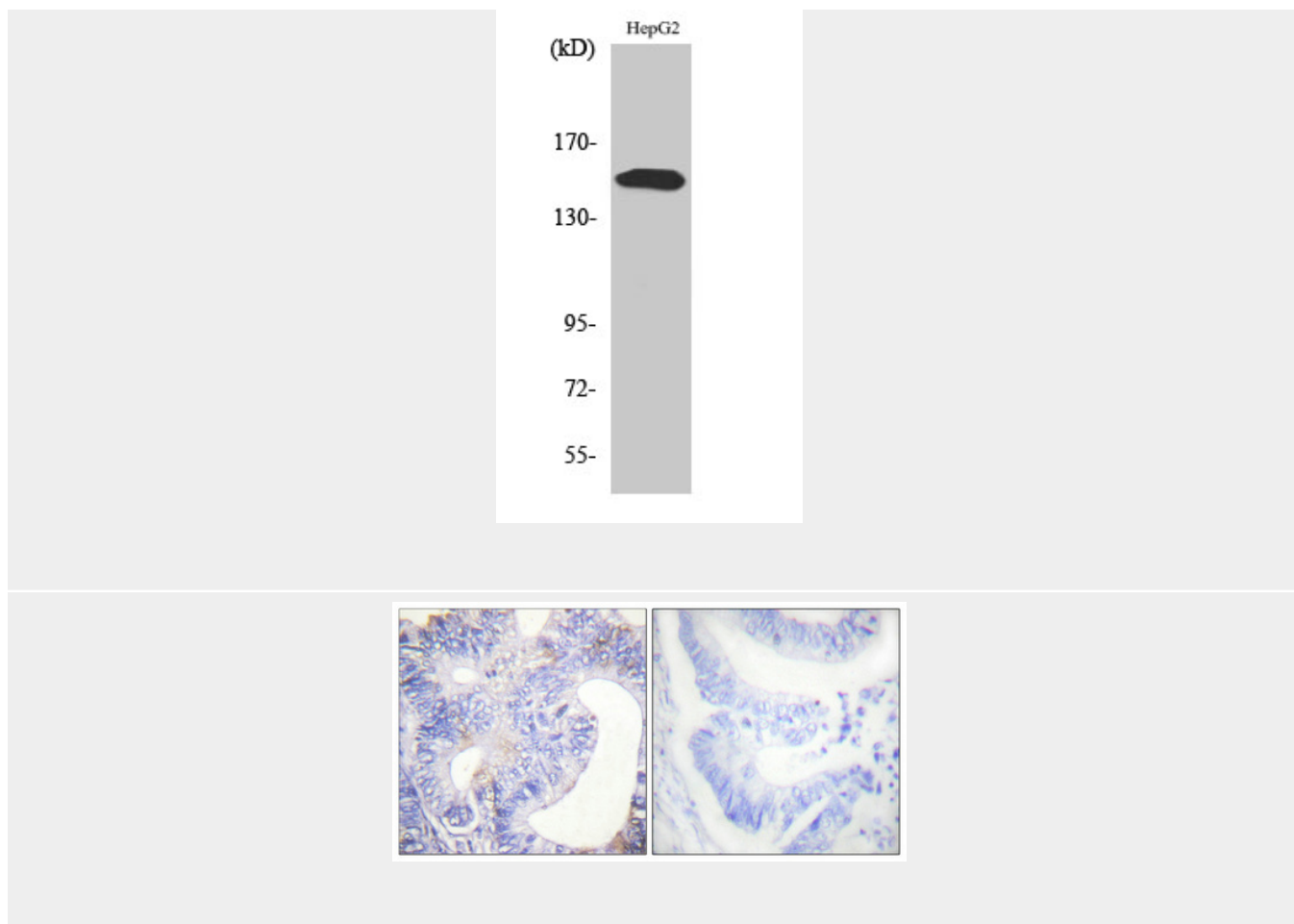
Provided below are standard protocols that you may find useful for product applications.

- [Western Blot](#)

- [Blocking Peptides](#)
- [Dot Blot](#)
- [Immunohistochemistry](#)
- [Immunofluorescence](#)
- [Immunoprecipitation](#)
- [Flow Cytometry](#)
- [Cell Culture](#)

PLC γ 2 (phospho Tyr753) Polyclonal Antibody - Images





PLC γ 2 (phospho Tyr753) Polyclonal Antibody - Background

The production of the second messenger molecules diacylglycerol (DAG) and inositol 1,4,5-trisphosphate (IP3) is mediated by activated phosphatidylinositol-specific phospholipase C enzymes. It is a crucial enzyme in transmembrane signaling.