

IL-13R α 1 (phospho Tyr405) Polyclonal Antibody
Catalog # AP67490**Specification**

IL-13R α 1 (phospho Tyr405) Polyclonal Antibody - Product Information

Application	WB
Primary Accession	P78552
Reactivity	Human, Mouse, Rat
Host	Rabbit
Clonality	Polyclonal

IL-13R α 1 (phospho Tyr405) Polyclonal Antibody - Additional Information**Gene ID** 3597**Other Names**

IL13RA1; IL13R; IL13RA; Interleukin-13 receptor subunit alpha-1; IL-13 receptor subunit alpha-1; IL-13R subunit alpha-1; IL-13R-alpha-1; IL-13RA1; Cancer/testis antigen 19; CT19; CD antigen CD213a1

Dilution

WB~~Western Blot: 1/500 - 1/2000. Immunofluorescence: 1/200 - 1/1000. ELISA: 1/10000. Not yet tested in other applications.

Format

Liquid in PBS containing 50% glycerol, 0.5% BSA and 0.09% (W/V) sodium azide.

Storage Conditions

-20°C

IL-13R α 1 (phospho Tyr405) Polyclonal Antibody - Protein Information**Name** IL13RA1**Synonyms** IL13R, IL13RA**Function**

Binds with low affinity to interleukin-13 (IL13). Together with IL4RA can form a functional receptor for IL13. Also serves as an alternate accessory protein to the common cytokine receptor gamma chain for interleukin-4 (IL4) signaling, but cannot replace the function of IL2RG in allowing enhanced interleukin-2 (IL2) binding activity.

Cellular Location

Membrane; Single-pass type I membrane protein.

Tissue Location

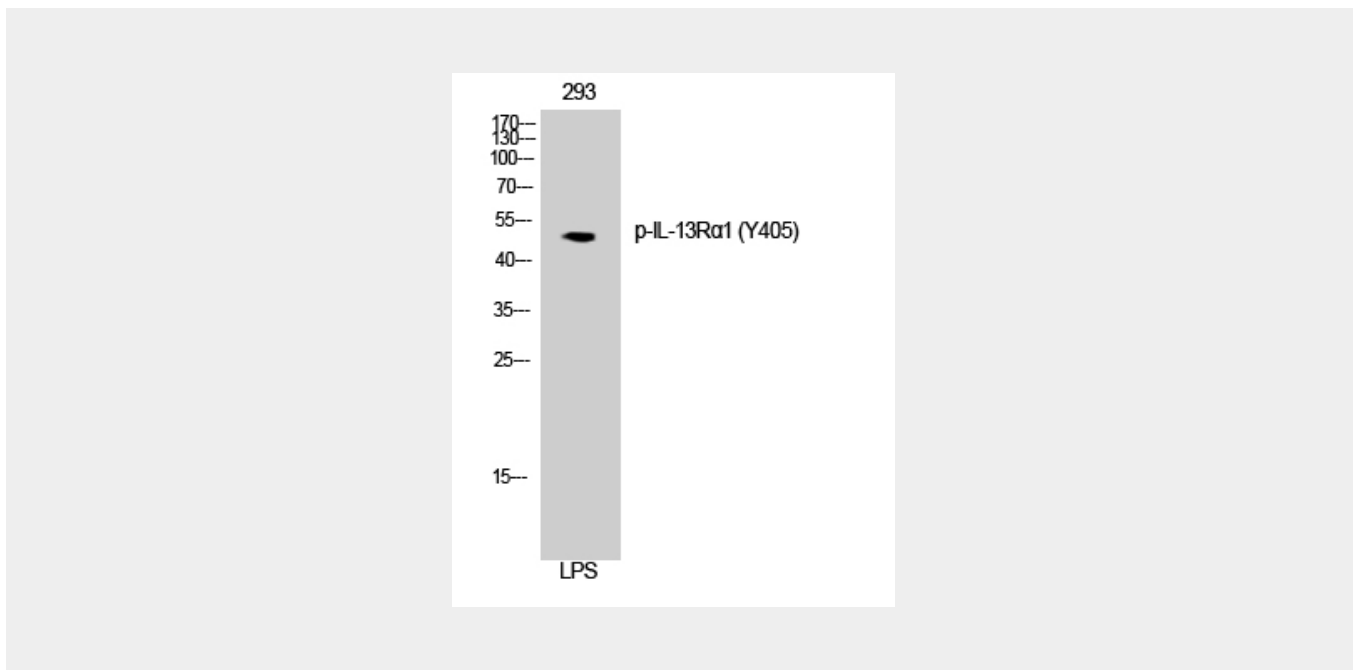
Ubiquitous. Highest levels in heart, liver, skeletal muscle and ovary; lowest levels in brain, lung and kidney Also found in B-cells, T-cells and endothelial cells

IL-13R α 1 (phospho Tyr405) Polyclonal Antibody - Protocols

Provided below are standard protocols that you may find useful for product applications.

- [Western Blot](#)
- [Blocking Peptides](#)
- [Dot Blot](#)
- [Immunohistochemistry](#)
- [Immunofluorescence](#)
- [Immunoprecipitation](#)
- [Flow Cytometry](#)
- [Cell Culture](#)

IL-13R α 1 (phospho Tyr405) Polyclonal Antibody - Images



IL-13R α 1 (phospho Tyr405) Polyclonal Antibody - Background

Binds with low affinity to interleukin-13 (IL13). Together with IL4RA can form a functional receptor for IL13. Also serves as an alternate accessory protein to the common cytokine receptor gamma chain for interleukin-4 (IL4) signaling, but cannot replace the function of IL2RG in allowing enhanced interleukin-2 (IL2) binding activity.