

**TOMM70A Antibody (C-term)**  
**Purified Rabbit Polyclonal Antibody (Pab)**  
**Catalog # AP6745b**

**Specification**

---

**TOMM70A Antibody (C-term) - Product Information**

Application	WB, IHC-P, FC,E
Primary Accession	<a href="#">O94826</a>
Other Accession	<a href="#">O75039</a> , <a href="#">O9CZW5</a>
Reactivity	Human
Predicted	Mouse, Rat
Host	Rabbit
Clonality	Polyclonal
Isotype	Rabbit IgG
Antigen Region	579-608

**TOMM70A Antibody (C-term) - Additional Information**

**Gene ID** 9868

**Other Names**

Mitochondrial import receptor subunit TOM70, Mitochondrial precursor proteins import receptor, Translocase of outer membrane 70 kDa subunit, TOMM70A, KIAA0719, TOM70

**Target/Specificity**

This TOMM70A antibody is generated from rabbits immunized with a KLH conjugated synthetic peptide between 579-608 amino acids from the C-terminal region of human TOMM70A.

**Dilution**

WB~~1:1000  
IHC-P~~1:50~100  
FC~~1:10~50

**Format**

Purified polyclonal antibody supplied in PBS with 0.09% (W/V) sodium azide. This antibody is prepared by Saturated Ammonium Sulfate (SAS) precipitation followed by dialysis against PBS.

**Storage**

Maintain refrigerated at 2-8°C for up to 2 weeks. For long term storage store at -20°C in small aliquots to prevent freeze-thaw cycles.

**Precautions**

TOMM70A Antibody (C-term) is for research use only and not for use in diagnostic or therapeutic procedures.

**TOMM70A Antibody (C-term) - Protein Information**

**Name** TOMM70 ([HGNC:11985](#))

**Function** Acts as a receptor of the preprotein translocase complex of the outer mitochondrial membrane (TOM complex) (PubMed:[12526792](#)). Recognizes and mediates the translocation of mitochondrial preproteins from the cytosol into the mitochondria in a chaperone dependent manner (PubMed:[12526792](#), PubMed:[35025629](#)). Mediates TBK1 and IRF3 activation induced by MAVS in response to Sendai virus infection and promotes host antiviral responses during virus infection (PubMed:[20628368](#), PubMed:[25609812](#), PubMed:[32728199](#)). Upon Sendai virus infection, recruits HSP90AA1:IRF3:BAX in mitochondrion and the complex induces apoptosis (PubMed:[25609812](#)).

#### **Cellular Location**

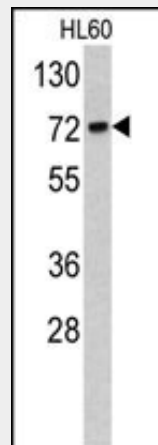
Mitochondrion outer membrane; Single-pass membrane protein

#### **TOMM70A Antibody (C-term) - Protocols**

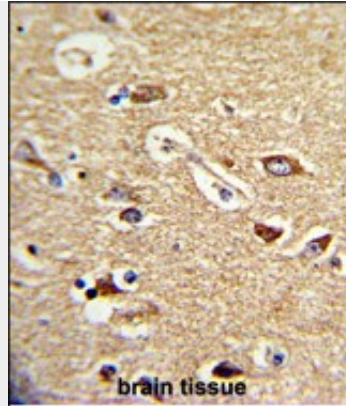
Provided below are standard protocols that you may find useful for product applications.

- [Western Blot](#)
- [Blocking Peptides](#)
- [Dot Blot](#)
- [Immunohistochemistry](#)
- [Immunofluorescence](#)
- [Immunoprecipitation](#)
- [Flow Cytometry](#)
- [Cell Culture](#)

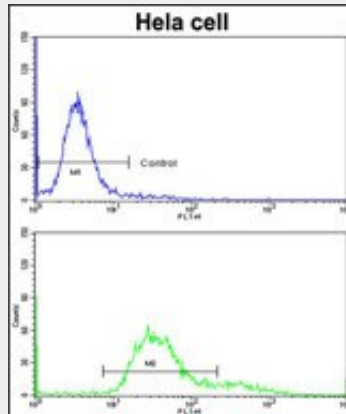
#### **TOMM70A Antibody (C-term) - Images**



Western blot analysis of TOMM70A antibody (C-term) (Cat. #AP6745b) in HL60 cell line lysates (35ug/lane). TOMM70A (arrow) was detected using the purified Pab.



Formalin-fixed and paraffin-embedded human brain tissue reacted with TOMM70A Antibody (C-term), which was peroxidase-conjugated to the secondary antibody, followed by DAB staining. This data demonstrates the use of this antibody for immunohistochemistry; clinical relevance has not been evaluated.



Flow cytometric analysis of hela cells using TOMM70A Antibody (C-term)(bottom histogram) compared to a negative control cell (top histogram)FITC-conjugated goat-anti-rabbit secondary antibodies were used for the analysis.

### **TOMM70A Antibody (C-term) - Background**

The translocase of outer mitochondrial membrane (TOM) complex is a multisubunit complex involved in the recognition, unfolding, and translocation of preproteins into the mitochondria.

### **TOMM70A Antibody (C-term) - References**

Blesa,J.R., Gene 427 (1-2), 58-64 (2008)  
 Chou,C.H., Mol. Biol. Cell 17 (9), 3952-3963 (2006)  
 Edmonson,A.M., Cell Commun. Adhes. 9 (1), 15-27 (2002)

### **TOMM70A Antibody (C-term) - Citations**

- [Endothelial Mitochondrial Preprotein Translocase Tomm7-Rac1 Signaling Axis Dominates Cerebrovascular Network Homeostasis.](#)
- [Proteomic analysis of mitochondria in respiratory epithelial cells infected with human respiratory syncytial virus and functional implications for virus and cell biology.](#)