

**TOMM70A Antibody (N-term)**  
**Affinity Purified Rabbit Polyclonal Antibody (Pab)**  
**Catalog # AP6745a****Specification**

---

**TOMM70A Antibody (N-term) - Product Information**

Application	<b>WB, IHC-P,E</b>
Primary Accession	<a href="#">O94826</a>
Other Accession	<a href="#">O75039</a> , <a href="#">O9CZW5</a>
Reactivity	<b>Human</b>
Predicted	<b>Mouse, Rat</b>
Host	<b>Rabbit</b>
Clonality	<b>Polyclonal</b>
Isotype	<b>Rabbit IgG</b>
Antigen Region	<b>177-205</b>

**TOMM70A Antibody (N-term) - Additional Information****Gene ID** 9868**Other Names**

Mitochondrial import receptor subunit TOM70, Mitochondrial precursor proteins import receptor, Translocase of outer membrane 70 kDa subunit, TOMM70A, KIAA0719, TOM70

**Target/Specificity**

This TOMM70A antibody is generated from rabbits immunized with a KLH conjugated synthetic peptide between 177-205 amino acids from the N-terminal region of human TOMM70A.

**Dilution**WB~~1:1000  
IHC-P~~1:50~100**Format**

Purified polyclonal antibody supplied in PBS with 0.09% (W/V) sodium azide. This antibody is purified through a protein A column, followed by peptide affinity purification.

**Storage**

Maintain refrigerated at 2-8°C for up to 2 weeks. For long term storage store at -20°C in small aliquots to prevent freeze-thaw cycles.

**Precautions**

TOMM70A Antibody (N-term) is for research use only and not for use in diagnostic or therapeutic procedures.

**TOMM70A Antibody (N-term) - Protein Information****Name** TOMM70 ([HGNC:11985](#))

**Function** Acts as a receptor of the preprotein translocase complex of the outer mitochondrial membrane (TOM complex) (PubMed:[12526792](#)). Recognizes and mediates the translocation of mitochondrial preproteins from the cytosol into the mitochondria in a chaperone dependent manner (PubMed:[12526792](#), PubMed:[35025629](#)). Mediates TBK1 and IRF3 activation induced by MAVS in response to Sendai virus infection and promotes host antiviral responses during virus infection (PubMed:[20628368](#), PubMed:[25609812](#), PubMed:[32728199](#)). Upon Sendai virus infection, recruits HSP90AA1:IRF3:BAX in mitochondrion and the complex induces apoptosis (PubMed:[25609812](#)).

#### Cellular Location

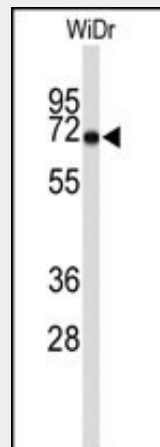
Mitochondrion outer membrane; Single-pass membrane protein

#### TOMM70A Antibody (N-term) - Protocols

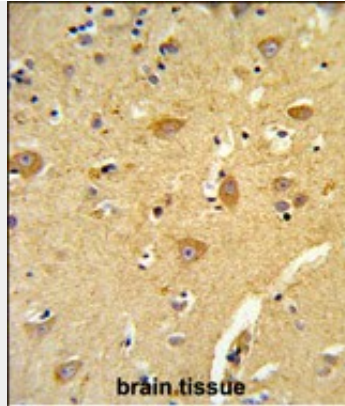
Provided below are standard protocols that you may find useful for product applications.

- [Western Blot](#)
- [Blocking Peptides](#)
- [Dot Blot](#)
- [Immunohistochemistry](#)
- [Immunofluorescence](#)
- [Immunoprecipitation](#)
- [Flow Cytometry](#)
- [Cell Culture](#)

#### TOMM70A Antibody (N-term) - Images



Western blot analysis of TOMM70A Antibody (N-term) (Cat.#AP6745a) in WiDr cell line lysates (35ug/lane). TOMM70A (arrow) was detected using the purified Pab.



Formalin-fixed and paraffin-embedded human brain tissue reacted with TOMM70A Antibody (N-term), which was peroxidase-conjugated to the secondary antibody, followed by DAB staining. This data demonstrates the use of this antibody for immunohistochemistry; clinical relevance has not been evaluated.

#### **TOMM70A Antibody (N-term) - Background**

The translocase of outer mitochondrial membrane (TOM) complex is a multisubunit complex involved in the recognition, unfolding, and translocation of preproteins into the mitochondria.

#### **TOMM70A Antibody (N-term) - References**

Blesa, J.R., et al., *Gene* 427 (1-2), 58-64 (2008)  
Chou, C.H., et al., *Mol. Biol. Cell* 17 (9), 3952-3963 (2006)  
Edmonson, A.M., et al., *Cell Commun. Adhes.* 9 (1), 15-27 (2002)

#### **TOMM70A Antibody (N-term) - Citations**

- [Proteomic analysis of mitochondria in respiratory epithelial cells infected with human respiratory syncytial virus and functional implications for virus and cell biology.](#)