

**CHC1L Antibody (N-term)**  
**Purified Rabbit Polyclonal Antibody (Pab)**  
**Catalog # AP6741a**

**Specification**

---

**CHC1L Antibody (N-term) - Product Information**

Application	WB, IHC-P, FC,E
Primary Accession	<a href="#">O95199</a>
Reactivity	Human
Host	Rabbit
Clonality	Polyclonal
Isotype	Rabbit IgG
Calculated MW	60315
Antigen Region	71-99

**CHC1L Antibody (N-term) - Additional Information**

**Gene ID** 1102

**Other Names**

RCC1 and BTB domain-containing protein 2, Chromosome condensation 1-like, CHC1-L, RCC1-like G exchanging factor, Regulator of chromosome condensation and BTB domain-containing protein 2, RCBTB2, CHC1L, RLG

**Target/Specificity**

This CHC1L antibody is generated from rabbits immunized with a KLH conjugated synthetic peptide between 71-99 amino acids from the N-terminal region of human CHC1L.

**Dilution**

WB~~1:2000  
IHC-P~~1:50~100  
FC~~1:10~50

**Format**

Purified polyclonal antibody supplied in PBS with 0.09% (W/V) sodium azide. This antibody is purified through a protein A column, followed by peptide affinity purification.

**Storage**

Maintain refrigerated at 2-8°C for up to 2 weeks. For long term storage store at -20°C in small aliquots to prevent freeze-thaw cycles.

**Precautions**

CHC1L Antibody (N-term) is for research use only and not for use in diagnostic or therapeutic procedures.

**CHC1L Antibody (N-term) - Protein Information**

**Name** RCBTB2

**Synonyms** CHC1L, RLG

**Cellular Location**

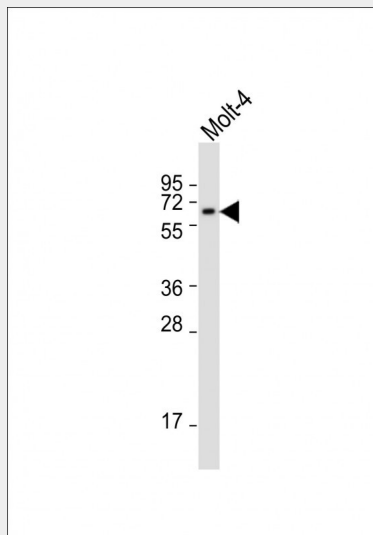
Cytoplasmic vesicle, secretory vesicle, acrosome {ECO:0000250|UniProtKB:Q99LJ7}. Note=Mainly found in the acrosomal cap region. {ECO:0000250|UniProtKB:Q99LJ7}

**CHC1L Antibody (N-term) - Protocols**

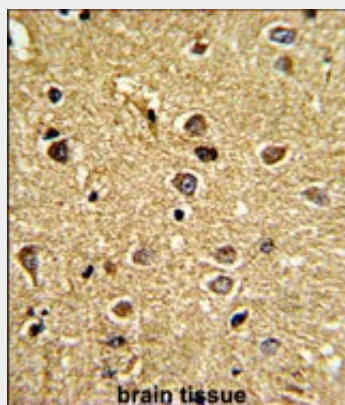
Provided below are standard protocols that you may find useful for product applications.

- [Western Blot](#)
- [Blocking Peptides](#)
- [Dot Blot](#)
- [Immunohistochemistry](#)
- [Immunofluorescence](#)
- [Immunoprecipitation](#)
- [Flow Cytometry](#)
- [Cell Culture](#)

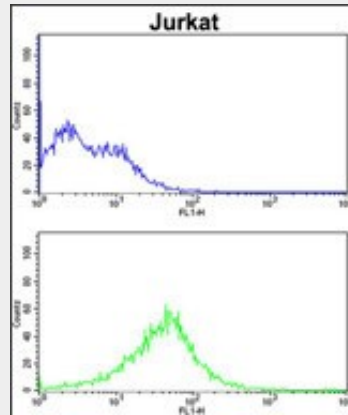
**CHC1L Antibody (N-term) - Images**



Anti-CHC1L Antibody (N-term) at 1:2000 dilution + Molt-4 whole cell lysate Lysates/proteins at 20 µg per lane. Secondary Goat Anti-Rabbit IgG, (H+L), Peroxidase conjugated at 1/10000 dilution. Predicted band size : 60 kDa Blocking/Dilution buffer: 5% NFDm/TBST.



Formalin-fixed and paraffin-embedded human brain tissue reacted with CHC1L Antibody (N-term), which was peroxidase-conjugated to the secondary antibody, followed by DAB staining. This data demonstrates the use of this antibody for immunohistochemistry; clinical relevance has not been evaluated.



CHC1L Antibody (N-term) (Cat. #AP6741a) flow cytometric analysis of Jurkat cells (bottom histogram) compared to a negative control cell (top histogram). FITC-conjugated goat-anti-rabbit secondary antibodies were used for the analysis.

#### **CHC1L Antibody (N-term) - Background**

RCBTB2 is a member of the RCC1-related GEF family. The N-terminal half of the amino acid sequence shows similarity to the regulator of chromosome condensation RCC1, which acts as a guanine nucleotide exchange factor (GEF) protein for the Ras-related GTPase Ran.

#### **CHC1L Antibody (N-term) - References**

Latil, A., Int. J. Cancer 99 (5), 689-696 (2002)