

CD40 (phospho Thr254) Polyclonal Antibody
Catalog # AP67311**Specification**

CD40 (phospho Thr254) Polyclonal Antibody - Product Information

| | |
|-------------------|------------------------|
| Application | WB |
| Primary Accession | P25942 |
| Reactivity | Human, Mouse |
| Host | Rabbit |
| Clonality | Polyclonal |

CD40 (phospho Thr254) Polyclonal Antibody - Additional Information**Gene ID** 958**Other Names**

CD40; TNFRSF5; Tumor necrosis factor receptor superfamily member 5; B-cell surface antigen CD40; Bp50; CD40L receptor; CDw40; CD antigen CD40

Dilution

WB~~Western Blot: 1/500 - 1/2000. ELISA: 1/5000. Not yet tested in other applications.

Format

Liquid in PBS containing 50% glycerol, 0.5% BSA and 0.09% (W/V) sodium azide.

Storage Conditions

-20°C

CD40 (phospho Thr254) Polyclonal Antibody - Protein Information**Name** CD40**Synonyms** TNFRSF5**Function**

Receptor for TNFSF5/CD40LG (PubMed: 31331973). Transduces TRAF6- and MAP3K8-mediated signals that activate ERK in macrophages and B cells, leading to induction of immunoglobulin secretion (By similarity).

Cellular Location

[Isoform I]: Cell membrane; Single-pass type I membrane protein

Tissue Location

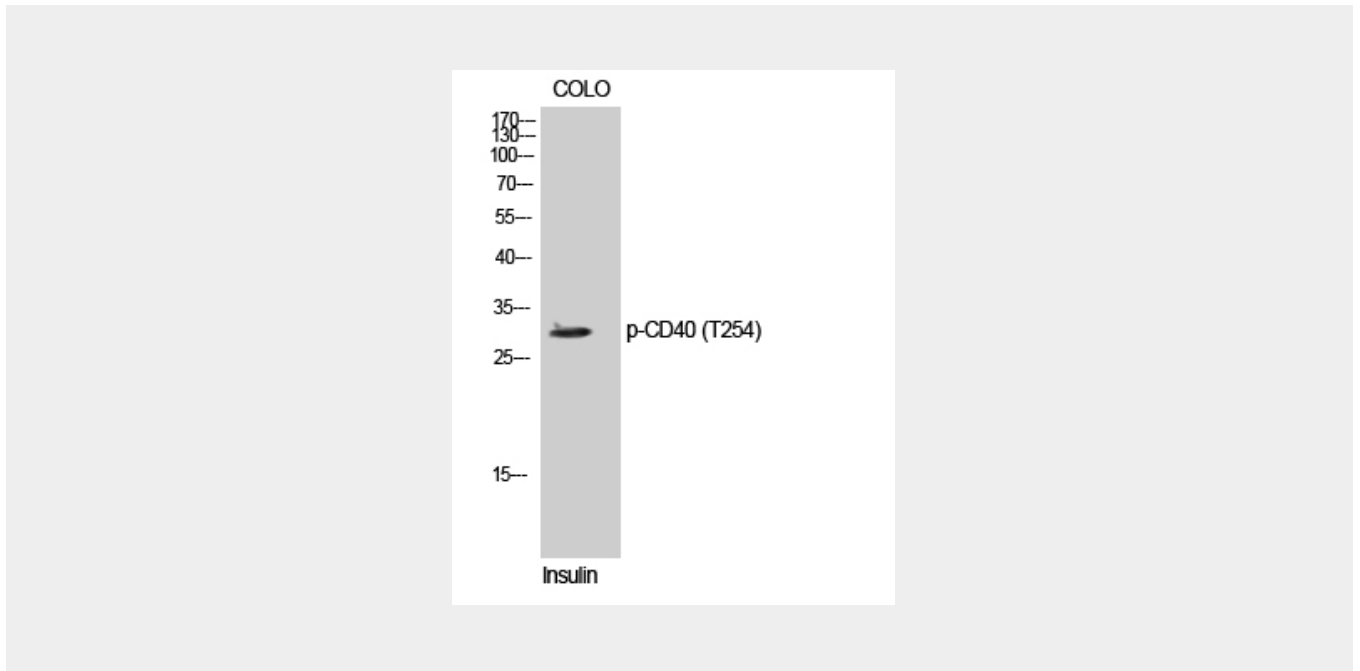
B-cells and in primary carcinomas.

CD40 (phospho Thr254) Polyclonal Antibody - Protocols

Provided below are standard protocols that you may find useful for product applications.

- [Western Blot](#)
- [Blocking Peptides](#)
- [Dot Blot](#)
- [Immunohistochemistry](#)
- [Immunofluorescence](#)
- [Immunoprecipitation](#)
- [Flow Cytometry](#)
- [Cell Culture](#)

CD40 (phospho Thr254) Polyclonal Antibody - Images



CD40 (phospho Thr254) Polyclonal Antibody - Background

Receptor for TNFSF5/CD40LG. Transduces TRAF6- and MAP3K8-mediated signals that activate ERK in macrophages and B cells, leading to induction of immunoglobulin secretion.