

EIF4B (phospho Ser422) Polyclonal Antibody
Catalog # AP67212**Specification**

EIF4B (phospho Ser422) Polyclonal Antibody - Product Information

Application	WB
Primary Accession	P23588
Reactivity	Human, Mouse
Host	Rabbit
Clonality	Polyclonal

EIF4B (phospho Ser422) Polyclonal Antibody - Additional Information**Gene ID** 1975**Other Names**

EIF4B; Eukaryotic translation initiation factor 4B; eIF-4B

Dilution

WB~~Western Blot: 1/500 - 1/2000. Immunohistochemistry: 1/100 - 1/300. Immunofluorescence: 1/200 - 1/1000. ELISA: 1/40000. Not yet tested in other applications.

Format

Liquid in PBS containing 50% glycerol, 0.5% BSA and 0.09% (W/V) sodium azide.

Storage Conditions

-20°C

EIF4B (phospho Ser422) Polyclonal Antibody - Protein Information**Name** EIF4B**Function**

Required for the binding of mRNA to ribosomes. Functions in close association with EIF4-F and EIF4-A. Binds near the 5'-terminal cap of mRNA in presence of EIF-4F and ATP. Promotes the ATPase activity and the ATP-dependent RNA unwinding activity of both EIF4-A and EIF4-F.

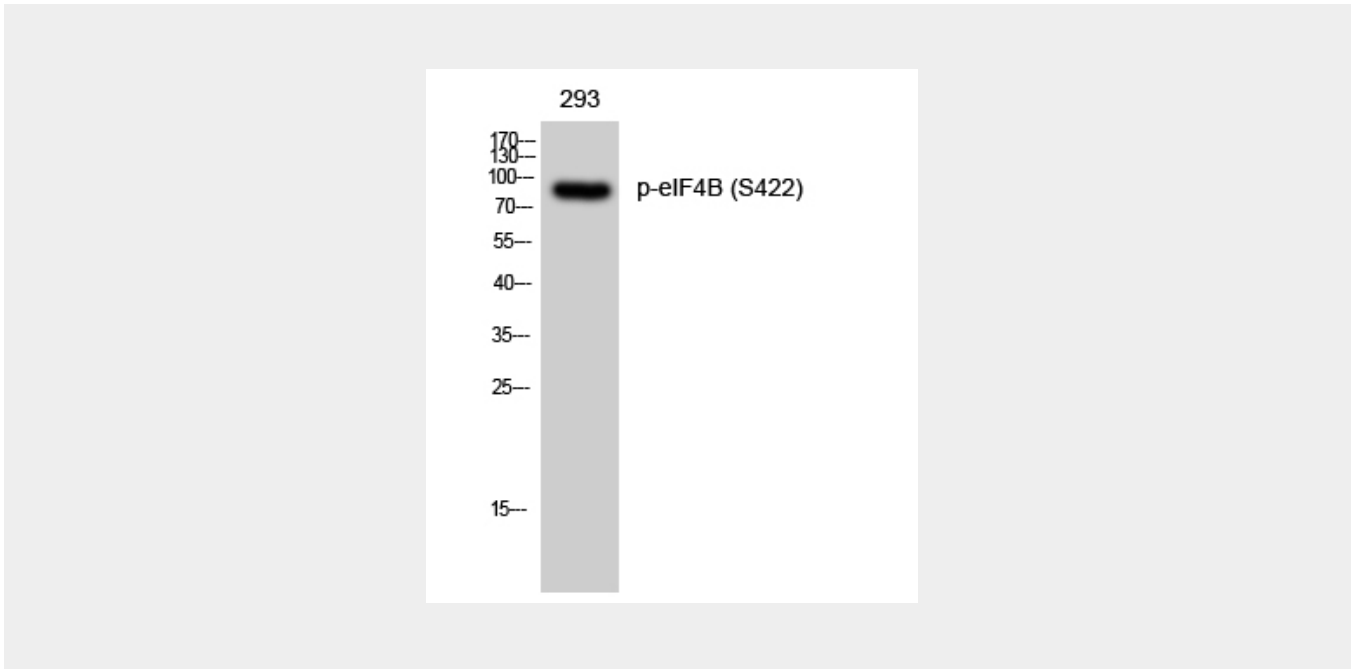
EIF4B (phospho Ser422) Polyclonal Antibody - Protocols

Provided below are standard protocols that you may find useful for product applications.

- [Western Blot](#)
- [Blocking Peptides](#)
- [Dot Blot](#)
- [Immunohistochemistry](#)
- [Immunofluorescence](#)

- [Immunoprecipitation](#)
- [Flow Cytometry](#)
- [Cell Culture](#)

eIF4B (phospho Ser422) Polyclonal Antibody - Images



eIF4B (phospho Ser422) Polyclonal Antibody - Background

Required for the binding of mRNA to ribosomes. Functions in close association with EIF4-F and EIF4-A. Binds near the 5'- terminal cap of mRNA in presence of EIF-4F and ATP. Promotes the ATPase activity and the ATP-dependent RNA unwinding activity of both EIF4-A and EIF4-F.