

MAML3 Antibody (C-term)
Purified Rabbit Polyclonal Antibody (Pab)
Catalog # AP6719b

Specification

MAML3 Antibody (C-term) - Product Information

Application	WB, IHC-P, FC,E
Primary Accession	O96JK9
Reactivity	Human
Host	Rabbit
Clonality	Polyclonal
Isotype	Rabbit IgG
Calculated MW	122293
Antigen Region	640-665

MAML3 Antibody (C-term) - Additional Information

Gene ID 55534

Other Names

Mastermind-like protein 3, Mam-3, MAML3 ([HGNC:16272](http://www.genenames.org/cgi-bin/gene_symbol_report?hgnc_id=16272))

Target/Specificity

This MAML3 antibody is generated from rabbits immunized with a KLH conjugated synthetic peptide between 640-665 amino acids from the C-terminal region of human MAML3.

Dilution

WB~~1:1000
IHC-P~~1:50~100
FC~~1:10~50

Format

Purified polyclonal antibody supplied in PBS with 0.09% (W/V) sodium azide. This antibody is prepared by Saturated Ammonium Sulfate (SAS) precipitation followed by dialysis against PBS.

Storage

Maintain refrigerated at 2-8°C for up to 2 weeks. For long term storage store at -20°C in small aliquots to prevent freeze-thaw cycles.

Precautions

MAML3 Antibody (C-term) is for research use only and not for use in diagnostic or therapeutic procedures.

MAML3 Antibody (C-term) - Protein Information

Name MAML3 ([HGNC:16272](#))

Function Acts as a transcriptional coactivator for NOTCH proteins. Has been shown to amplify NOTCH-induced transcription of HES1.

Cellular Location

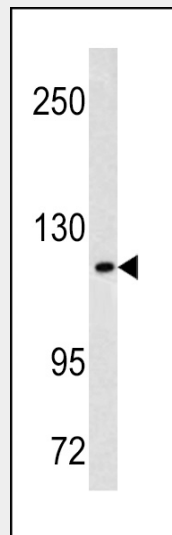
Nucleus speckle. Note=Nuclear, in a punctate manner

MAML3 Antibody (C-term) - Protocols

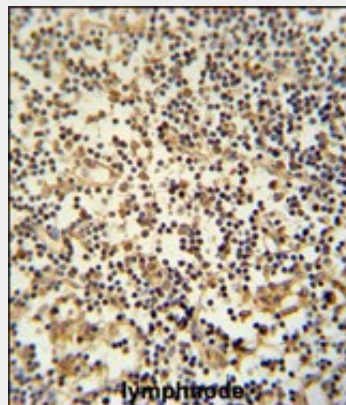
Provided below are standard protocols that you may find useful for product applications.

- [Western Blot](#)
- [Blocking Peptides](#)
- [Dot Blot](#)
- [Immunohistochemistry](#)
- [Immunofluorescence](#)
- [Immunoprecipitation](#)
- [Flow Cytometry](#)
- [Cell Culture](#)

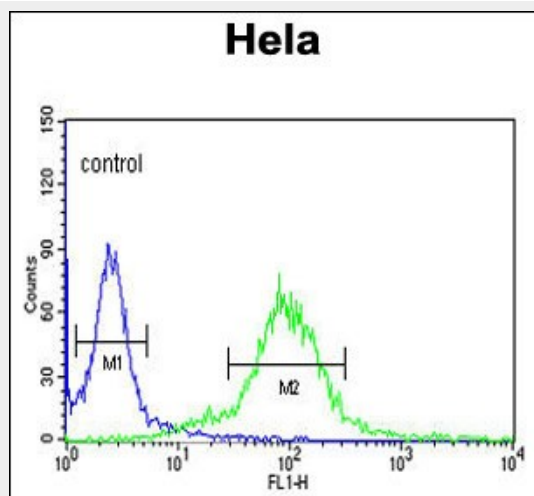
MAML3 Antibody (C-term) - Images



Western blot analysis of MAML3 antibody (C-term) (Cat. #AP6719b) in HeLa cell line lysates (35ug/lane). MAML3 (arrow) was detected using the purified Pab.



MAML3 Antibody (C-term) (Cat. #AP6719b) immunohistochemistry analysis in formalin fixed and paraffin embedded human lymphnode followed by peroxidase conjugation of the secondary antibody and DAB staining. This data demonstrates the use of the MAML3 Antibody (C-term) for immunohistochemistry. Clinical relevance has not been evaluated.



MAML3 Antibody (C-term) (Cat. #AP6719b) flow cytometric analysis of Hela cells (right histogram) compared to a negative control cell (left histogram). FITC-conjugated goat-anti-rabbit secondary antibodies were used for the analysis.

MAML3 Antibody (C-term) - Background

MAML3 acts as a transcriptional coactivator for NOTCH proteins. The protein has been shown to amplify NOTCH-induced transcription of HES1.

MAML3 Antibody (C-term) - References

Tonon, G., Nat. Genet. 33 (2), 208-213 (2003)
Lin, S.E., J. Biol. Chem. 277 (52), 50612-50620 (2002)