

**Tau (phospho Ser396) Polyclonal Antibody**  
Catalog # AP67195**Specification****Tau (phospho Ser396) Polyclonal Antibody - Product Information**

Application	IF
Primary Accession	<a href="#">P10636</a>
Reactivity	Human, Mouse, Rat
Host	Rabbit
Clonality	Polyclonal

**Tau (phospho Ser396) Polyclonal Antibody - Additional Information****Gene ID** 4137**Other Names**

MAPT; MAPTL; MTBT1; TAU; Microtubule-associated protein tau; Neurofibrillary tangle protein; Paired helical filament-tau; PHF-tau

**Dilution**

IF~IF: 1:50-200 WB 1:500-2000, IHC 1:50-300 IHC 1:50-300

**Format**

Liquid in PBS containing 50% glycerol, 0.5% BSA and 0.09% (W/V) sodium azide.

**Storage Conditions**

-20°C

**Tau (phospho Ser396) Polyclonal Antibody - Protein Information****Name** MAPT ([HGNC:6893](#))**Synonyms** MAPTL, MTBT1, TAU**Function**

Promotes microtubule assembly and stability, and might be involved in the establishment and maintenance of neuronal polarity (PubMed: [21985311](http://www.uniprot.org/citations/21985311)). The C-terminus binds axonal microtubules while the N-terminus binds neural plasma membrane components, suggesting that tau functions as a linker protein between both (PubMed: [21985311](http://www.uniprot.org/citations/21985311), PubMed: [32961270](http://www.uniprot.org/citations/32961270)). Axonal polarity is predetermined by TAU/MAPT localization (in the neuronal cell) in the domain of the cell body defined by the centrosome. The short isoforms allow plasticity of the cytoskeleton whereas the longer isoforms may preferentially play a role in its stabilization.

**Cellular Location**

Cytoplasm, cytosol. Cell membrane; Peripheral membrane protein; Cytoplasmic side. Cytoplasm,

cytoskeleton. Cell projection, axon. Cell projection, dendrite. Secreted Note=Mostly found in the axons of neurons, in the cytosol and in association with plasma membrane components (PubMed:10747907). Can be secreted; the secretion is dependent on protein unfolding and facilitated by the cargo receptor TMED10; it results in protein translocation from the cytoplasm into the ERGIC (endoplasmic reticulum- Golgi intermediate compartment) followed by vesicle entry and secretion (PubMed:32272059).

#### Tissue Location

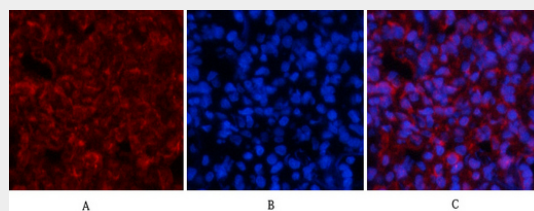
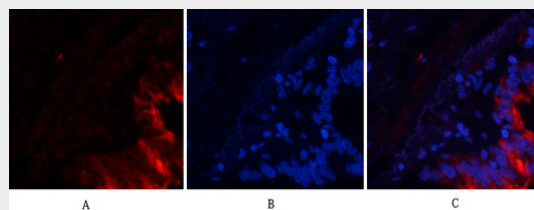
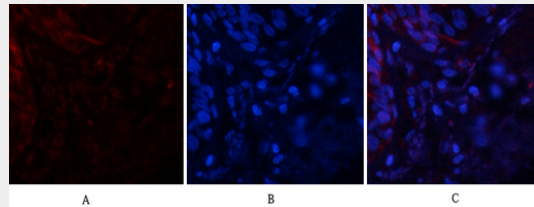
Expressed in neurons. Isoform PNS-tau is expressed in the peripheral nervous system while the others are expressed in the central nervous system

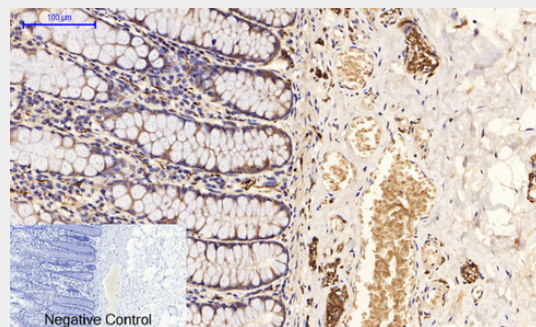
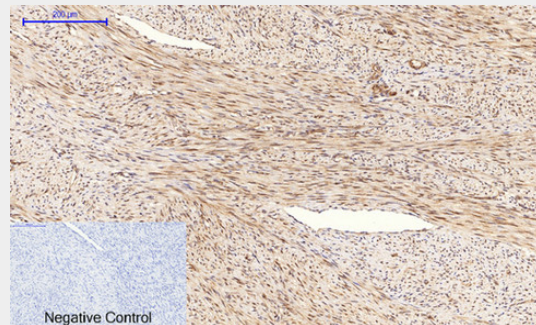
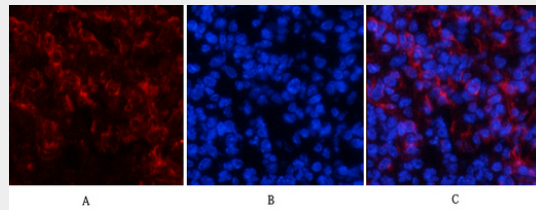
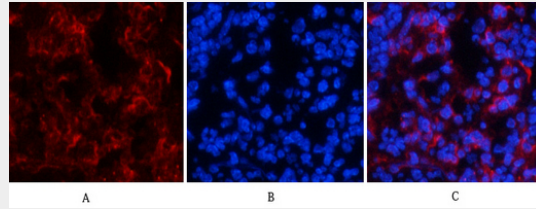
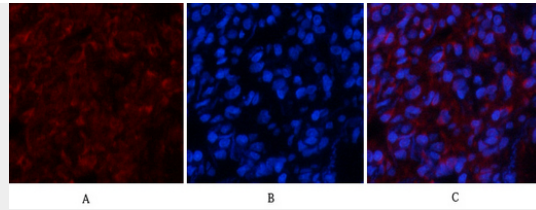
### Tau (phospho Ser396) Polyclonal Antibody - Protocols

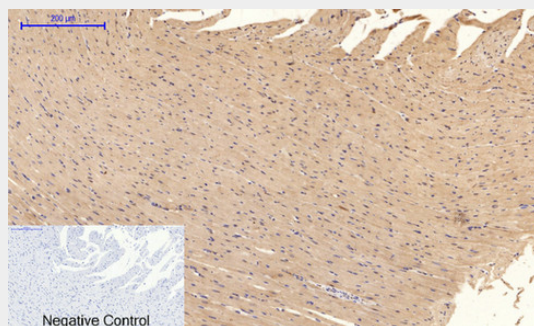
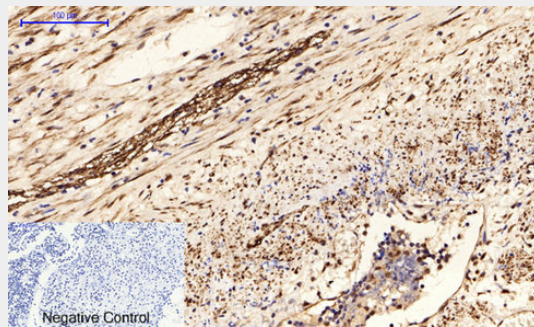
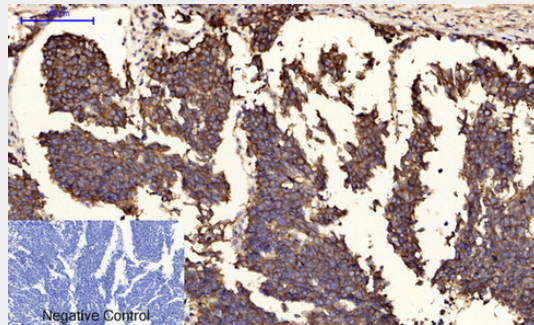
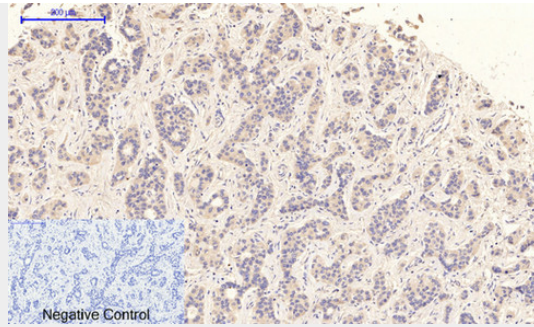
Provided below are standard protocols that you may find useful for product applications.

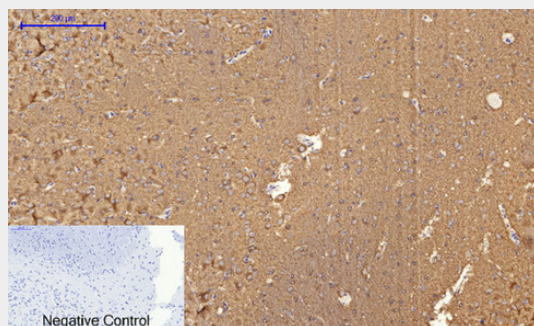
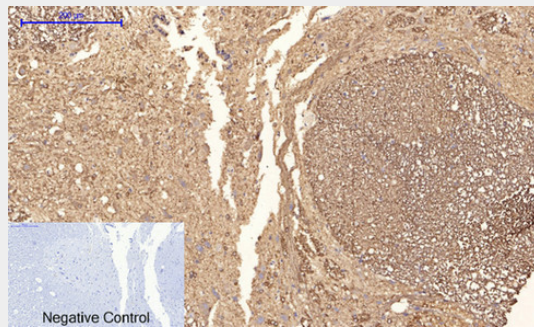
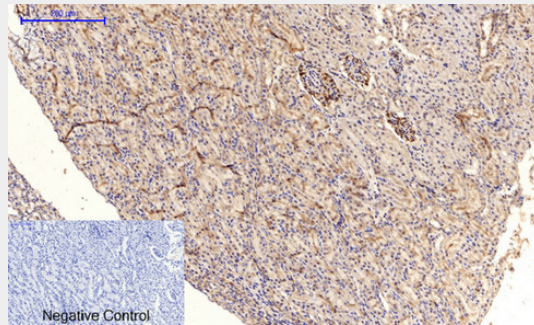
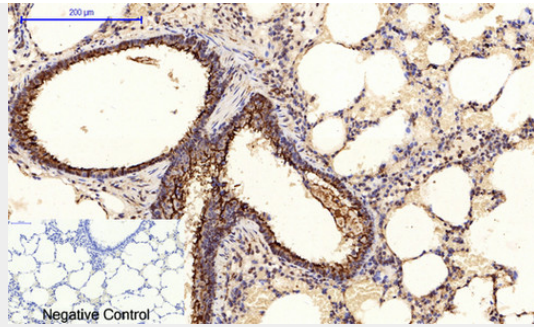
- [Western Blot](#)
- [Blocking Peptides](#)
- [Dot Blot](#)
- [Immunohistochemistry](#)
- [Immunofluorescence](#)
- [Immunoprecipitation](#)
- [Flow Cytometry](#)
- [Cell Culture](#)

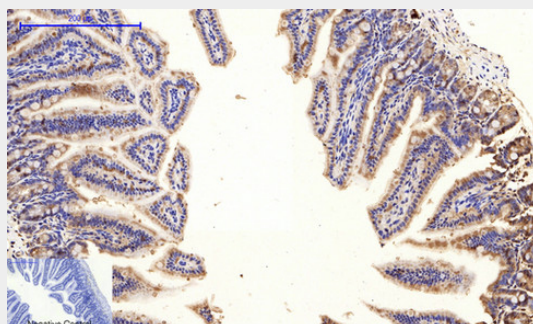
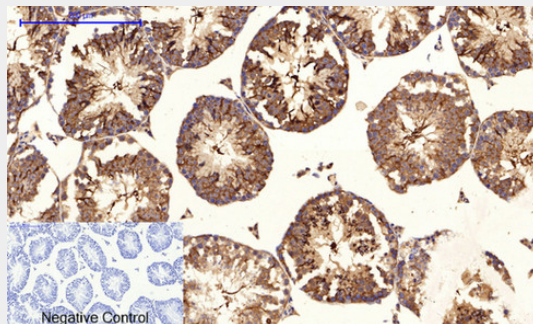
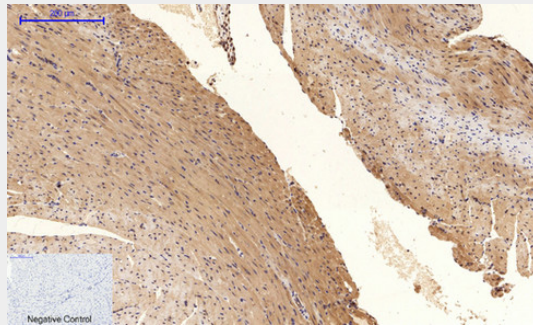
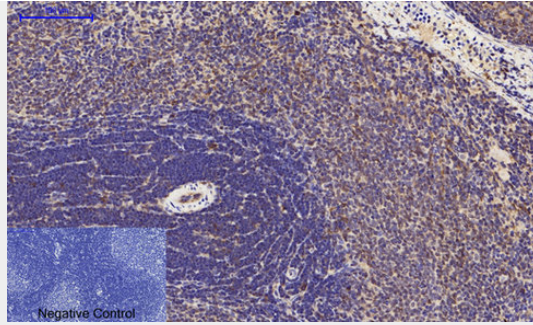
### Tau (phospho Ser396) Polyclonal Antibody - Images

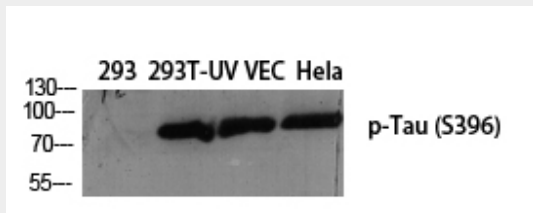
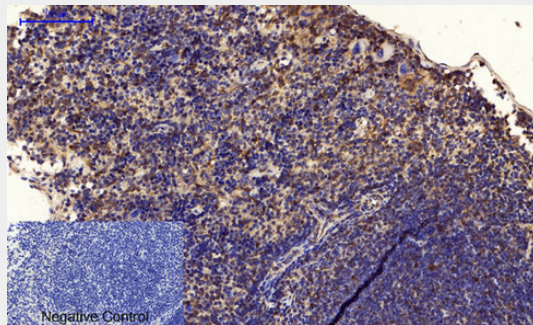
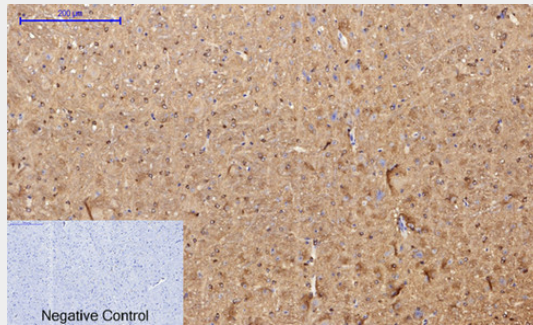
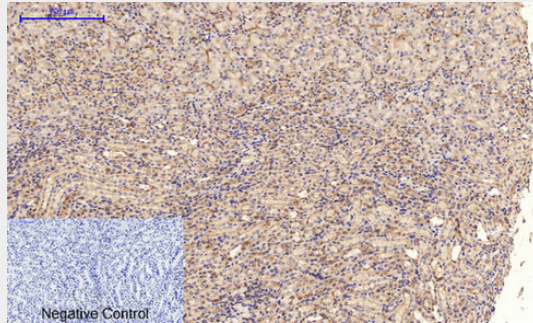
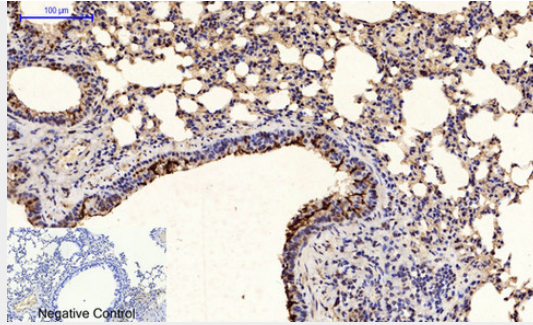


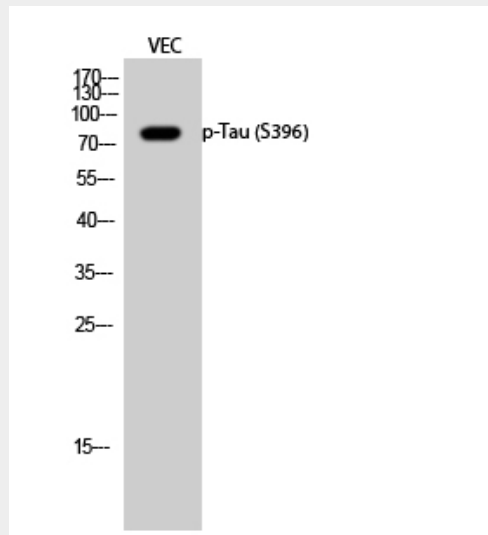












### **Tau (phospho Ser396) Polyclonal Antibody - Background**

Promotes microtubule assembly and stability, and might be involved in the establishment and maintenance of neuronal polarity. The C-terminus binds axonal microtubules while the N-terminus binds neural plasma membrane components, suggesting that tau functions as a linker protein between both. Axonal polarity is predetermined by TAU/MAPT localization (in the neuronal cell) in the domain of the cell body defined by the centrosome. The short isoforms allow plasticity of the cytoskeleton whereas the longer isoforms may preferentially play a role in its stabilization.