

**Stat6 (phospho Thr645) Polyclonal Antibody**  
Catalog # AP67187**Specification**

---

**Stat6 (phospho Thr645) Polyclonal Antibody - Product Information**

Application	WB
Primary Accession	<a href="#">P42226</a>
Reactivity	Human, Mouse, Rat
Host	Rabbit
Clonality	Polyclonal

**Stat6 (phospho Thr645) Polyclonal Antibody - Additional Information****Gene ID** 6778**Other Names**

STAT6; Signal transducer and activator of transcription 6; IL-4 Stat

**Dilution**

WB~~Western Blot: 1/500 - 1/2000. Immunohistochemistry: 1/100 - 1/300. Immunoprecipitation: 2-5 ug/mg lysate. ELISA: 1/10000. Not yet tested in other applications.

**Format**

Liquid in PBS containing 50% glycerol, 0.5% BSA and 0.09% (W/V) sodium azide.

**Storage Conditions**

-20°C

**Stat6 (phospho Thr645) Polyclonal Antibody - Protein Information****Name** STAT6**Function**

Carries out a dual function: signal transduction and activation of transcription. Involved in IL4/interleukin-4- and IL3/interleukin-3-mediated signaling.

**Cellular Location**

Cytoplasm. Nucleus. Note=Translocated into the nucleus in response to phosphorylation

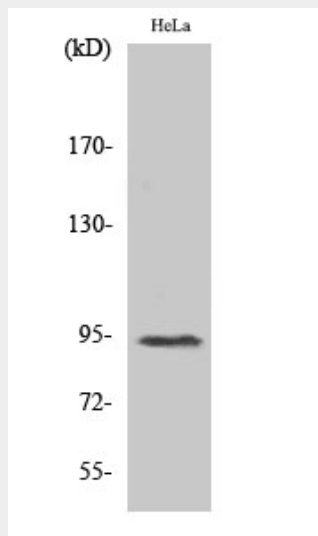
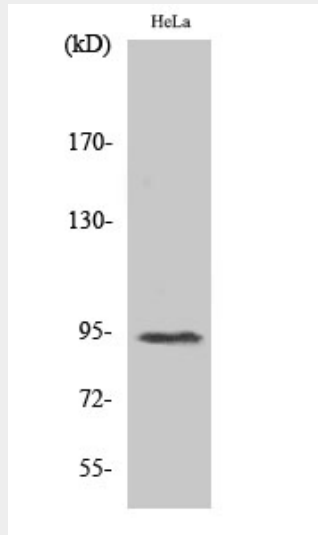
**Stat6 (phospho Thr645) Polyclonal Antibody - Protocols**

Provided below are standard protocols that you may find useful for product applications.

- [Western Blot](#)
- [Blocking Peptides](#)
- [Dot Blot](#)

- [Immunohistochemistry](#)
- [Immunofluorescence](#)
- [Immunoprecipitation](#)
- [Flow Cytometry](#)
- [Cell Culture](#)

### Stat6 (phospho Thr645) Polyclonal Antibody - Images



### Stat6 (phospho Thr645) Polyclonal Antibody - Background

Carries out a dual function: signal transduction and activation of transcription. Involved in IL4/interleukin-4- and IL3/interleukin-3-mediated signaling.