

**Stat3 (phospho Ser727) Polyclonal Antibody**  
Catalog # AP67182**Specification****Stat3 (phospho Ser727) Polyclonal Antibody - Product Information**

Application	IF
Primary Accession	<a href="#">P40763</a>
Reactivity	Human, Mouse, Rat, Monkey
Host	Rabbit
Clonality	Polyclonal

**Stat3 (phospho Ser727) Polyclonal Antibody - Additional Information**

Gene ID 6774

**Other Names**

STAT3; APRF; Signal transducer and activator of transcription 3; Acute-phase response factor

**Dilution**IF~IF: 1:50-200 Western Blot: 1/500 - 1/2000. Immunohistochemistry: 1/100 - 1/300.  
Immunoprecipitation: 2-5 ug/mg lysate. ELISA: 1/10000. Not yet tested in other applications.**Format**

Liquid in PBS containing 50% glycerol, 0.5% BSA and 0.09% (W/V) sodium azide.

**Storage Conditions**

-20°C

**Stat3 (phospho Ser727) Polyclonal Antibody - Protein Information**

Name STAT3 {ECO:0000303|PubMed:9630560, ECO:0000312|HGNC:HGNC:11364}

**Function**

Signal transducer and transcription activator that mediates cellular responses to interleukins, KITLG/SCF, LEP and other growth factors (PubMed: [10688651](http://www.uniprot.org/citations/10688651), PubMed: [12359225](http://www.uniprot.org/citations/12359225), PubMed: [12873986](http://www.uniprot.org/citations/12873986), PubMed: [15194700](http://www.uniprot.org/citations/15194700), PubMed: [15653507](http://www.uniprot.org/citations/15653507), PubMed: [16285960](http://www.uniprot.org/citations/16285960), PubMed: [17344214](http://www.uniprot.org/citations/17344214), PubMed: [18242580](http://www.uniprot.org/citations/18242580), PubMed: [18782771](http://www.uniprot.org/citations/18782771), PubMed: [22306293](http://www.uniprot.org/citations/22306293), PubMed: [23084476](http://www.uniprot.org/citations/23084476), PubMed: [28262505](http://www.uniprot.org/citations/28262505), PubMed: [32929201](http://www.uniprot.org/citations/32929201)). Once

activated, recruits coactivators, such as NCOA1 or MED1, to the promoter region of the target gene (PubMed:<a href="http://www.uniprot.org/citations/15653507" target="\_blank">15653507</a>, PubMed:<a href="http://www.uniprot.org/citations/16285960" target="\_blank">16285960</a>, PubMed:<a href="http://www.uniprot.org/citations/17344214" target="\_blank">17344214</a>, PubMed:<a href="http://www.uniprot.org/citations/18782771" target="\_blank">18782771</a>, PubMed:<a href="http://www.uniprot.org/citations/28262505" target="\_blank">28262505</a>, PubMed:<a href="http://www.uniprot.org/citations/32929201" target="\_blank">32929201</a>). May mediate cellular responses to activated FGFR1, FGFR2, FGFR3 and FGFR4 (PubMed:<a href="http://www.uniprot.org/citations/12873986" target="\_blank">12873986</a>). Upon activation of IL6ST/gp130 signaling by interleukin-6 (IL6), binds to the IL6-responsive elements identified in the promoters of various acute-phase protein genes (PubMed:<a href="http://www.uniprot.org/citations/12359225" target="\_blank">12359225</a>). Activated by IL31 through IL31RA (PubMed:<a href="http://www.uniprot.org/citations/15194700" target="\_blank">15194700</a>). Acts as a regulator of inflammatory response by regulating differentiation of naive CD4(+) T-cells into T-helper Th17 or regulatory T-cells (Treg): acetylation promotes its transcription activity and cell differentiation while deacetylation and oxidation of lysine residues by LOXL3 inhibits differentiation (PubMed:<a href="http://www.uniprot.org/citations/28065600" target="\_blank">28065600</a>, PubMed:<a href="http://www.uniprot.org/citations/28262505" target="\_blank">28262505</a>). Involved in cell cycle regulation by inducing the expression of key genes for the progression from G1 to S phase, such as CCND1 (PubMed:<a href="http://www.uniprot.org/citations/17344214" target="\_blank">17344214</a>). Mediates the effects of LEP on melanocortin production, body energy homeostasis and lactation (By similarity). May play an apoptotic role by transactivating BIRC5 expression under LEP activation (PubMed:<a href="http://www.uniprot.org/citations/18242580" target="\_blank">18242580</a>). Cytoplasmic STAT3 represses macroautophagy by inhibiting EIF2AK2/PKR activity (PubMed:<a href="http://www.uniprot.org/citations/23084476" target="\_blank">23084476</a>). Plays a crucial role in basal beta cell functions, such as regulation of insulin secretion (By similarity). Following JAK/STAT signaling activation and as part of a complex with NFATC3 and NFATC4, binds to the alpha-beta E4 promoter region of CRYAB and activates transcription in cardiomyocytes (By similarity).

### Cellular Location

Cytoplasm. Nucleus. Note=Shuttles between the nucleus and the cytoplasm. Translocated into the nucleus upon tyrosine phosphorylation and dimerization, in response to signaling by activated FGFR1, FGFR2, FGFR3 or FGFR4 (PubMed:15653507, PubMed:16285960). Constitutive nuclear presence is independent of tyrosine phosphorylation. Predominantly present in the cytoplasm without stimuli. Upon leukemia inhibitory factor (LIF) stimulation, accumulates in the nucleus. The complex composed of BART and ARL2 plays an important role in the nuclear translocation and retention of STAT3. Identified in a complex with LYN and PAG1. Translocates to the nucleus in the presence of EDN1 (By similarity). {ECO:0000250|UniProtKB:P52631, ECO:0000269|PubMed:15653507, ECO:0000269|PubMed:16285960}

### Tissue Location

Heart, brain, placenta, lung, liver, skeletal muscle, kidney and pancreas. Expressed in naive CD4(+) T cells as well as T-helper Th17, Th1 and Th2 cells (PubMed:31899195)

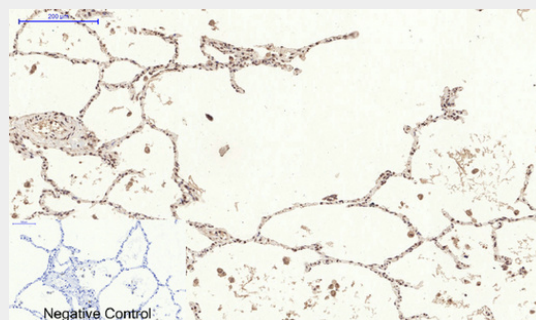
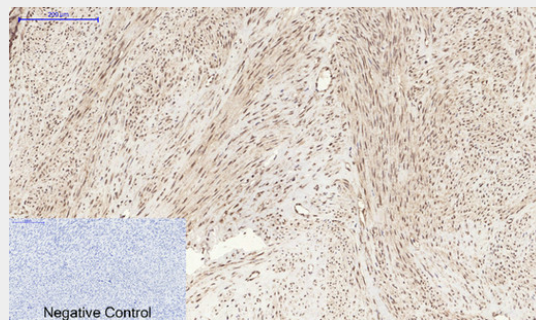
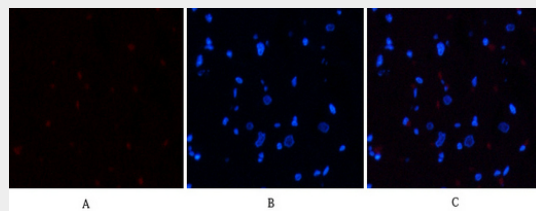
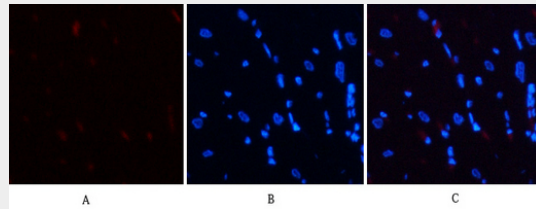
## Stat3 (phospho Ser727) Polyclonal Antibody - Protocols

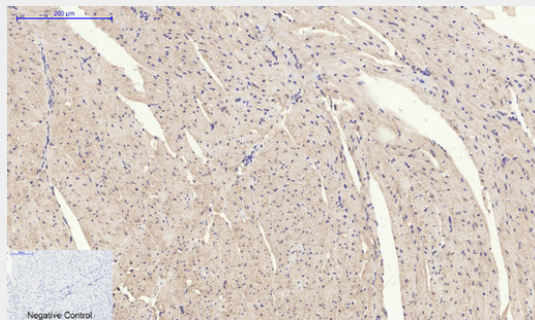
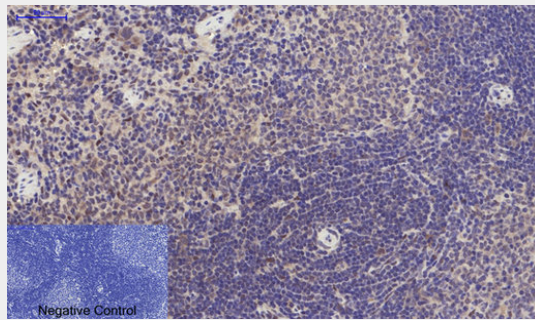
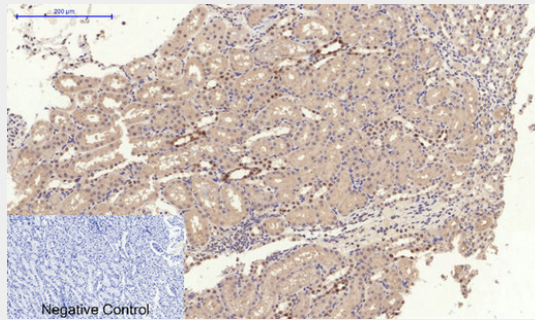
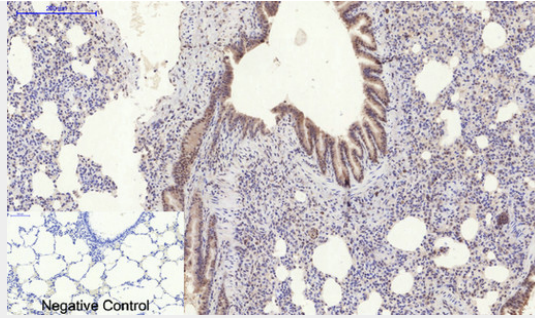
Provided below are standard protocols that you may find useful for product applications.

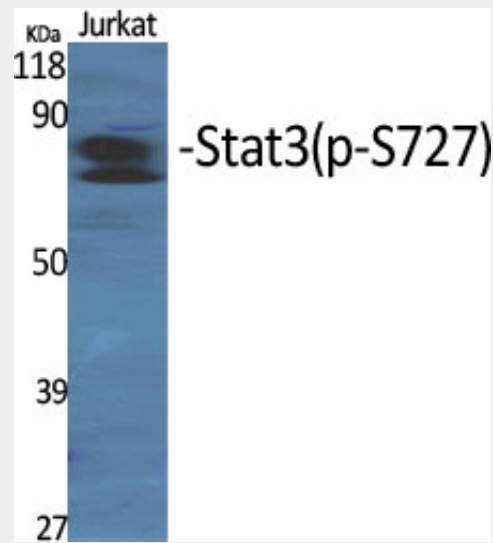
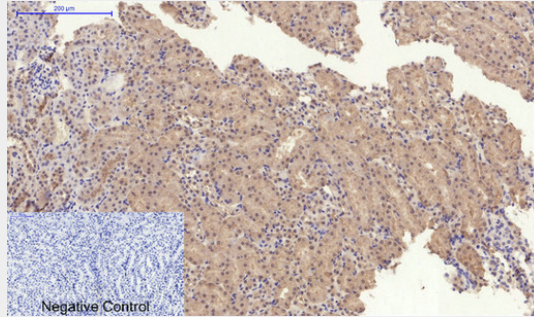
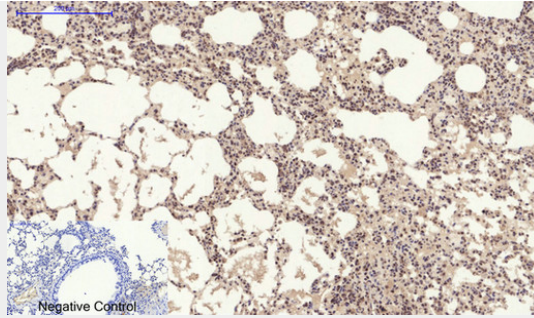
- [Western Blot](#)
- [Blocking Peptides](#)
- [Dot Blot](#)
- [Immunohistochemistry](#)

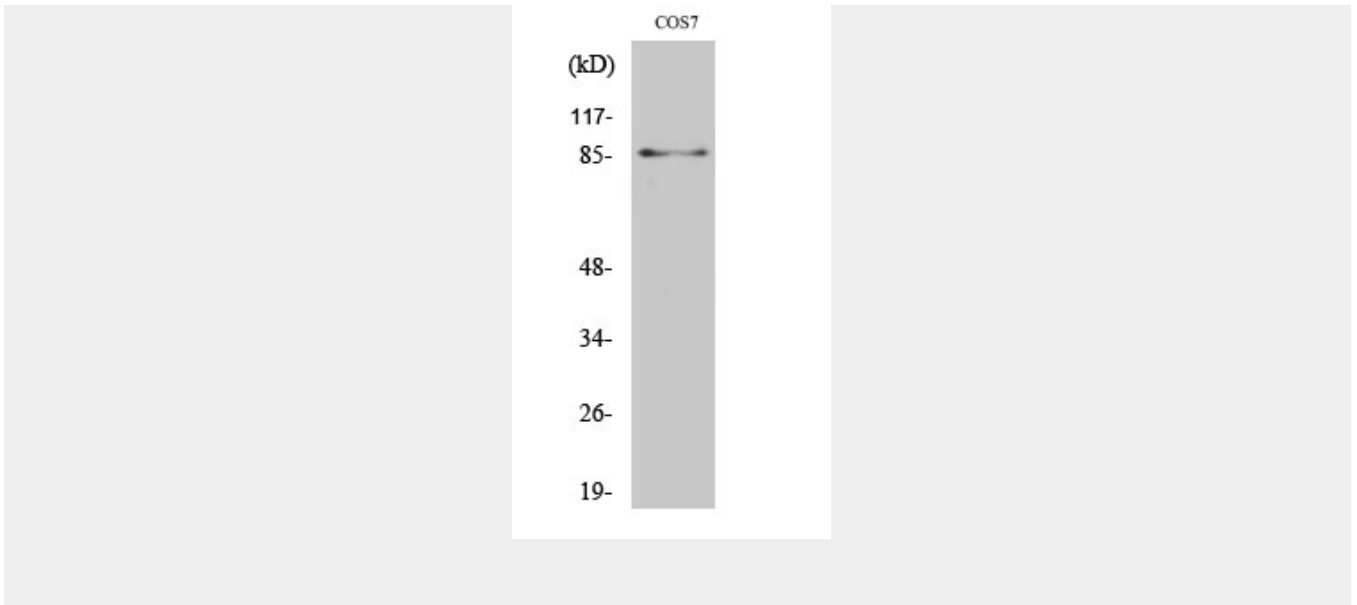
- [Immunofluorescence](#)
- [Immunoprecipitation](#)
- [Flow Cytometry](#)
- [Cell Culture](#)

### Stat3 (phospho Ser727) Polyclonal Antibody - Images









### Stat3 (phospho Ser727) Polyclonal Antibody - Background

Signal transducer and transcription activator that mediates cellular responses to interleukins, KITLG/SCF, LEP and other growth factors (PubMed:10688651, PubMed:12359225, PubMed:12873986, PubMed:15194700, PubMed:17344214, PubMed:18242580, PubMed:23084476). Once activated, recruits coactivators, such as NCOA1 or MED1, to the promoter region of the target gene (PubMed:17344214). May mediate cellular responses to activated FGFR1, FGFR2, FGFR3 and FGFR4 (PubMed:12873986). Binds to the interleukin-6 (IL-6)-responsive elements identified in the promoters of various acute-phase protein genes (PubMed:12359225). Activated by IL31 through IL31RA (PubMed:15194700). Acts as a regulator of inflammatory response by regulating differentiation of naive CD4(+) T-cells into T-helper Th17 or regulatory T-cells (Treg): deacetylation and oxidation of lysine residues by LOXL3, leads to disrupt STAT3 dimerization and inhibit its transcription activity (PubMed:28065600). Involved in cell cycle regulation by inducing the expression of key genes for the progression from G1 to S phase, such as CCND1 (PubMed:17344214). Mediates the effects of LEP on melanocortin production, body energy homeostasis and lactation (By similarity). May play an apoptotic role by transactivating BIRC5 expression under LEP activation (PubMed:18242580). Cytoplasmic STAT3 represses macroautophagy by inhibiting EIF2AK2/PKR activity (PubMed:23084476). Plays a crucial role in basal beta cell functions, such as regulation of insulin secretion (By similarity).