

## Pragmin (phospho Tyr413) Polyclonal Antibody Catalog # AP67168

### Specification

---

#### Pragmin (phospho Tyr413) Polyclonal Antibody - Product Information

Application	WB
Primary Accession	<a href="#">Q86YV5</a>
Reactivity	Human, Mouse, Rat
Host	Rabbit
Clonality	Polyclonal

#### Pragmin (phospho Tyr413) Polyclonal Antibody - Additional Information

Gene ID 157285

#### Other Names

SGK223; Tyrosine-protein kinase Sgk223; Sugen kinase 223

#### Dilution

WB~Western Blot: 1/500 - 1/2000. Immunohistochemistry: 1/100 - 1/300. ELISA: 1/10000. Not yet tested in other applications.

#### Format

Liquid in PBS containing 50% glycerol, 0.5% BSA and 0.09% (W/V) sodium azide.

#### Storage Conditions

-20°C

#### Pragmin (phospho Tyr413) Polyclonal Antibody - Protein Information

Name PRAG1 ([HGNC:25438](#))

Synonyms SGK223

#### Function

Catalytically inactive protein kinase that acts as a scaffold protein. Functions as an effector of the small GTPase RND2, which stimulates RhoA activity and inhibits NGF-induced neurite outgrowth (By similarity). Promotes Src family kinase (SFK) signaling by regulating the subcellular localization of CSK, a negative regulator of these kinases, leading to the regulation of cell morphology and motility by a CSK-dependent mechanism (By similarity). Acts as a critical coactivator of Notch signaling (By similarity).

#### Cellular Location

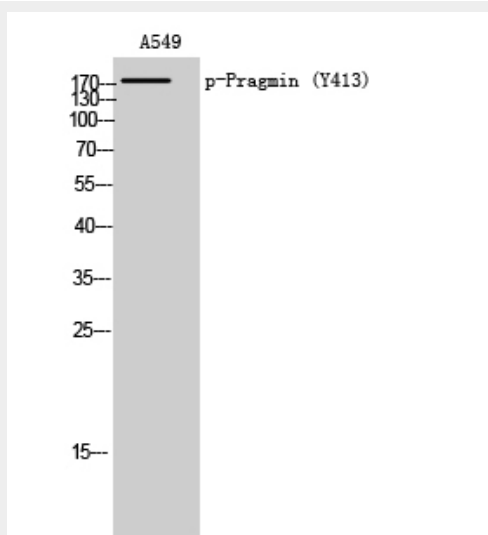
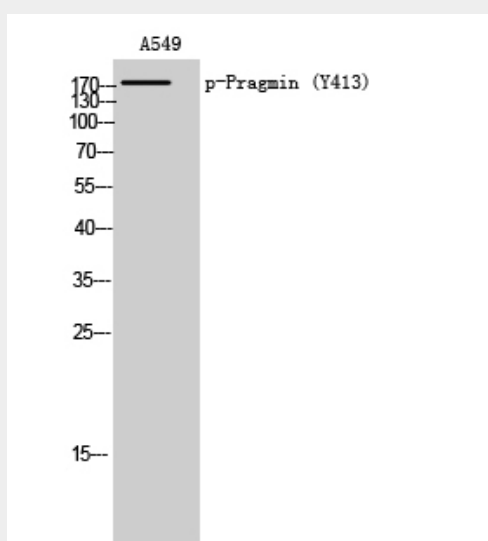
Cytoplasm {ECO:0000250|UniProtKB:D3ZMK9}. Cell junction, focal adhesion. Nucleus {ECO:0000250|UniProtKB:Q57114}. Note=Colocalized with NOTCH1 in the nucleus. {ECO:0000250|UniProtKB:Q57114}

## Pragmin (phospho Tyr413) Polyclonal Antibody - Protocols

Provided below are standard protocols that you may find useful for product applications.

- [Western Blot](#)
- [Blocking Peptides](#)
- [Dot Blot](#)
- [Immunohistochemistry](#)
- [Immunofluorescence](#)
- [Immunoprecipitation](#)
- [Flow Cytometry](#)
- [Cell Culture](#)

## Pragmin (phospho Tyr413) Polyclonal Antibody - Images



## Pragmin (phospho Tyr413) Polyclonal Antibody - Background

Catalytically inactive protein kinase that acts as a scaffold protein. Functions as an effector of the

small GTPase RND2, which stimulates RhoA activity and inhibits NGF-induced neurite outgrowth (By similarity). Promotes Src family kinase (SFK) signaling by regulating the subcellular localization of CSK, a negative regulator of these kinases, leading to the regulation of cell morphology and motility by a CSK-dependent mechanism (By similarity). Acts as a critical coactivator of Notch signaling (By similarity).