

PDLIM5 (phospho Tyr251) Polyclonal Antibody
Catalog # AP67155**Specification****PDLIM5 (phospho Tyr251) Polyclonal Antibody - Product Information**

| | |
|-------------------|------------------------|
| Application | WB |
| Primary Accession | Q96HC4 |
| Reactivity | Human |
| Host | Rabbit |
| Clonality | Polyclonal |

PDLIM5 (phospho Tyr251) Polyclonal Antibody - Additional Information**Gene ID** 10611**Other Names**

PDLIM5; ENH; L9; PDZ and LIM domain protein 5; Enigma homolog; Enigma-like PDZ and LIM domains protein

Dilution

WB~~Western Blot: 1/500 - 1/2000. ELISA: 1/10000. Not yet tested in other applications.

Format

Liquid in PBS containing 50% glycerol, 0.5% BSA and 0.09% (W/V) sodium azide.

Storage Conditions

-20°C

PDLIM5 (phospho Tyr251) Polyclonal Antibody - Protein Information**Name** PDLIM5 {ECO:0000303|PubMed:15346770, ECO:0000312|HGNC:HGNC:17468}**Function**

May play an important role in the heart development by scaffolding PKC to the Z-disk region. May play a role in the regulation of cardiomyocyte expansion. Isoforms lacking the LIM domains may negatively modulate the scaffolding activity of isoform 1. Overexpression promotes the development of heart hypertrophy. Contributes to the regulation of dendritic spine morphogenesis in neurons. May be required to restrain postsynaptic growth of excitatory synapses. Isoform 1, but not isoform 2, expression favors spine thinning and elongation.

Cellular Location

Postsynaptic density {ECO:0000250|UniProtKB:Q62920}. Presynapse {ECO:0000250|UniProtKB:Q62920}. Postsynapse {ECO:0000250|UniProtKB:Q62920}. Cytoplasm, cytosol {ECO:0000250|UniProtKB:Q62920}. Note=Detected both at presynaptic and postsynaptic sites, exclusively at excitatory synapses, but not inhibitory synapses, in hippocampal neurons {ECO:0000250|UniProtKB:Q62920}

Tissue Location

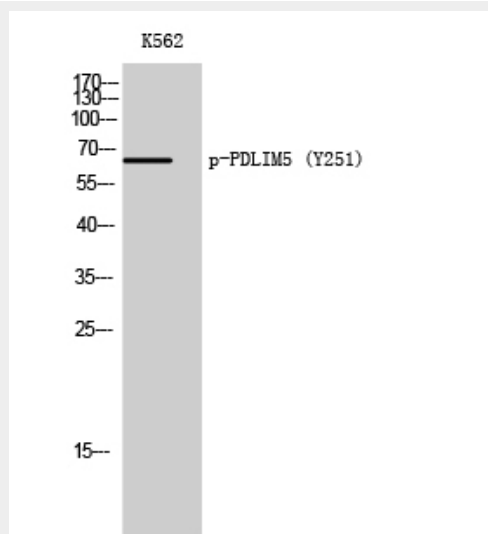
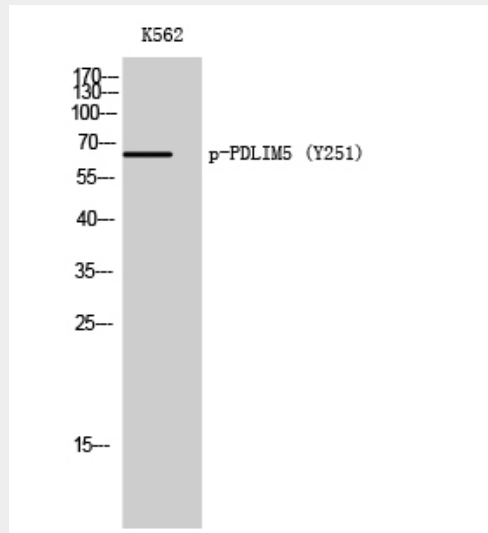
Heart and skeletal muscle specific. Expression is commonly increased in the brain of patients with bipolar disorder, schizophrenia, and major depression.

PDLIM5 (phospho Tyr251) Polyclonal Antibody - Protocols

Provided below are standard protocols that you may find useful for product applications.

- [Western Blot](#)
- [Blocking Peptides](#)
- [Dot Blot](#)
- [Immunohistochemistry](#)
- [Immunofluorescence](#)
- [Immunoprecipitation](#)
- [Flow Cytometry](#)
- [Cell Culture](#)

PDLIM5 (phospho Tyr251) Polyclonal Antibody - Images



PDLIM5 (phospho Tyr251) Polyclonal Antibody - Background

May play an important role in the heart development by scaffolding PKC to the Z-disk region. May play a role in the regulation of cardiomyocyte expansion. Overexpression promotes the development of heart hypertrophy. Contributes to the regulation of dendritic spine morphogenesis in neurons. May restrain postsynaptic growth of excitatory synapses (By similarity).