

**Paxillin (phospho Tyr88) Polyclonal Antibody**  
Catalog # AP67153**Specification**

---

**Paxillin (phospho Tyr88) Polyclonal Antibody - Product Information**

Application	WB
Primary Accession	<a href="#">P49023</a>
Reactivity	Human
Host	Rabbit
Clonality	Polyclonal

**Paxillin (phospho Tyr88) Polyclonal Antibody - Additional Information****Gene ID** 5829**Other Names**  
PXN; Paxillin**Dilution**

WB~~Western Blot: 1/500 - 1/2000. Immunohistochemistry: 1/100 - 1/300. ELISA: 1/10000. Not yet tested in other applications.

**Format**

Liquid in PBS containing 50% glycerol, 0.5% BSA and 0.09% (W/V) sodium azide.

**Storage Conditions**

-20°C

**Paxillin (phospho Tyr88) Polyclonal Antibody - Protein Information****Name** PXN**Function**

Cytoskeletal protein involved in actin-membrane attachment at sites of cell adhesion to the extracellular matrix (focal adhesion). Recruits other proteins such as TRIM15 to focal adhesion.

**Cellular Location**

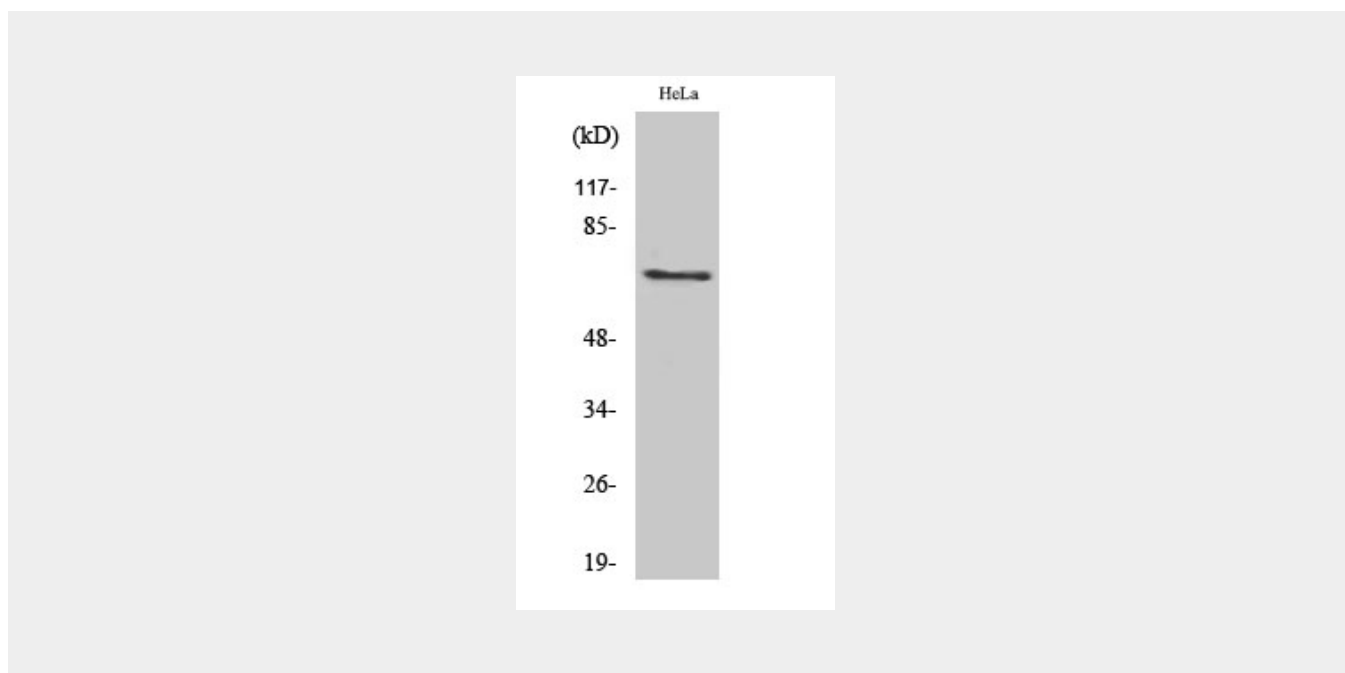
Cytoplasm, cytoskeleton. Cell junction, focal adhesion. Cytoplasm, cell cortex {ECO:0000250|UniProtKB:Q8VI36}. Note=Colocalizes with integrins at the cell periphery. Colocalize with PXN to membrane ruffles and the leading edge of migrating cells (PubMed:23128389). {ECO:0000250, ECO:0000269|PubMed:23128389}

**Paxillin (phospho Tyr88) Polyclonal Antibody - Protocols**

Provided below are standard protocols that you may find useful for product applications.

- [Western Blot](#)
- [Blocking Peptides](#)
- [Dot Blot](#)
- [Immunohistochemistry](#)
- [Immunofluorescence](#)
- [Immunoprecipitation](#)
- [Flow Cytometry](#)
- [Cell Culture](#)

### **Paxillin (phospho Tyr88) Polyclonal Antibody - Images**



### **Paxillin (phospho Tyr88) Polyclonal Antibody - Background**

Cytoskeletal protein involved in actin-membrane attachment at sites of cell adhesion to the extracellular matrix (focal adhesion).