

Paxillin (phospho Tyr31) Polyclonal Antibody
Catalog # AP67152**Specification**

Paxillin (phospho Tyr31) Polyclonal Antibody - Product Information

Application	WB
Primary Accession	P49023
Reactivity	Human, Mouse, Rat
Host	Rabbit
Clonality	Polyclonal

Paxillin (phospho Tyr31) Polyclonal Antibody - Additional Information**Gene ID** 5829**Other Names**
PXN; Paxillin**Dilution**

WB~~Western Blot: 1/500 - 1/2000. Immunohistochemistry: 1/100 - 1/300. ELISA: 1/20000. Not yet tested in other applications.

Format

Liquid in PBS containing 50% glycerol, 0.5% BSA and 0.09% (W/V) sodium azide.

Storage Conditions

-20°C

Paxillin (phospho Tyr31) Polyclonal Antibody - Protein Information**Name** PXN**Function**

Cytoskeletal protein involved in actin-membrane attachment at sites of cell adhesion to the extracellular matrix (focal adhesion). Recruits other proteins such as TRIM15 to focal adhesion.

Cellular Location

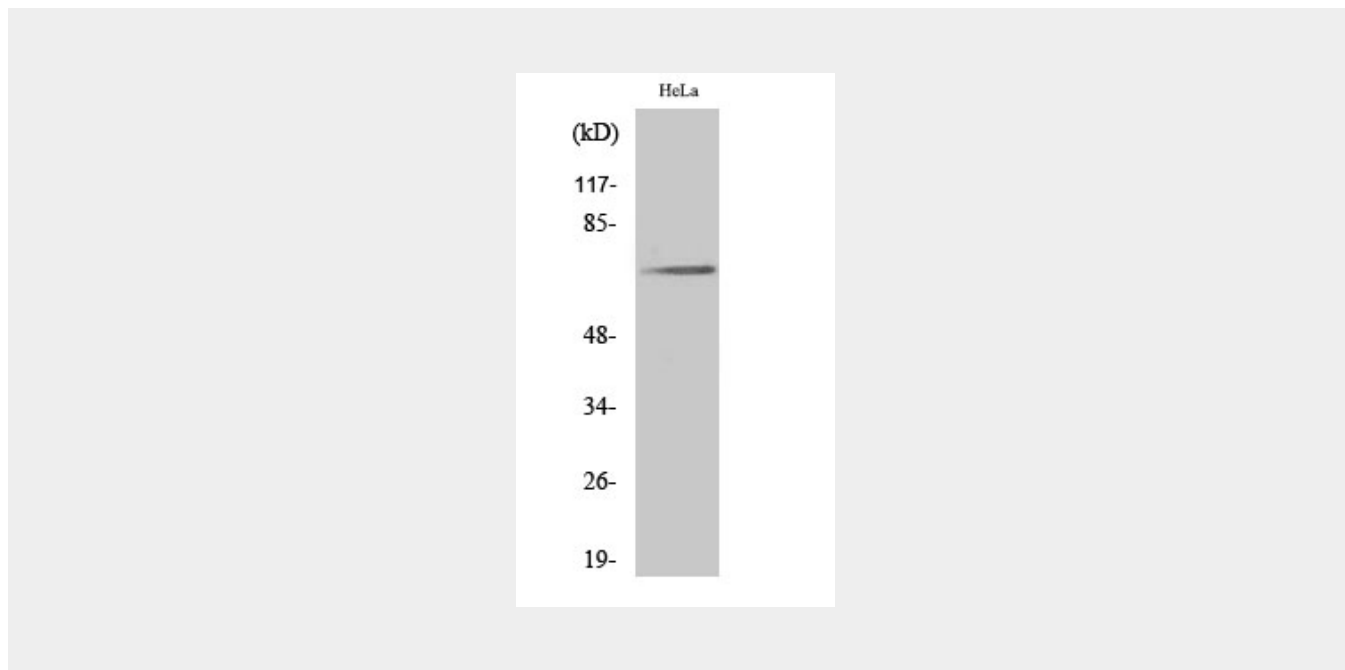
Cytoplasm, cytoskeleton. Cell junction, focal adhesion. Cytoplasm, cell cortex {ECO:0000250|UniProtKB:Q8VI36}. Note=Colocalizes with integrins at the cell periphery. Colocalize with PXN to membrane ruffles and the leading edge of migrating cells (PubMed:23128389). {ECO:0000250, ECO:0000269|PubMed:23128389}

Paxillin (phospho Tyr31) Polyclonal Antibody - Protocols

Provided below are standard protocols that you may find useful for product applications.

- [Western Blot](#)
- [Blocking Peptides](#)
- [Dot Blot](#)
- [Immunohistochemistry](#)
- [Immunofluorescence](#)
- [Immunoprecipitation](#)
- [Flow Cytometry](#)
- [Cell Culture](#)

Paxillin (phospho Tyr31) Polyclonal Antibody - Images



Paxillin (phospho Tyr31) Polyclonal Antibody - Background

Cytoskeletal protein involved in actin-membrane attachment at sites of cell adhesion to the extracellular matrix (focal adhesion).