

SERPINA7 Antibody (N-term)
Affinity Purified Rabbit Polyclonal Antibody (Pab)
Catalog # AP6714a

Specification

SERPINA7 Antibody (N-term) - Product Information

Application	WB,E
Primary Accession	P05543
Reactivity	Human
Host	Rabbit
Clonality	Polyclonal
Isotype	Rabbit IgG
Calculated MW	46325
Antigen Region	37-65

SERPINA7 Antibody (N-term) - Additional Information

Gene ID 6906

Other Names

Thyroxine-binding globulin, Serpin A7, T4-binding globulin, SERPINA7, TBG

Target/Specificity

This SERPINA7 antibody is generated from rabbits immunized with a KLH conjugated synthetic peptide between 37-65 amino acids from the N-terminal region of human SERPINA7.

Dilution

WB~~1:1000

Format

Purified polyclonal antibody supplied in PBS with 0.09% (W/V) sodium azide. This antibody is purified through a protein A column, followed by peptide affinity purification.

Storage

Maintain refrigerated at 2-8°C for up to 2 weeks. For long term storage store at -20°C in small aliquots to prevent freeze-thaw cycles.

Precautions

SERPINA7 Antibody (N-term) is for research use only and not for use in diagnostic or therapeutic procedures.

SERPINA7 Antibody (N-term) - Protein Information

Name SERPINA7

Synonyms TBG

Function Major thyroid hormone transport protein in serum.

Cellular Location

Secreted.

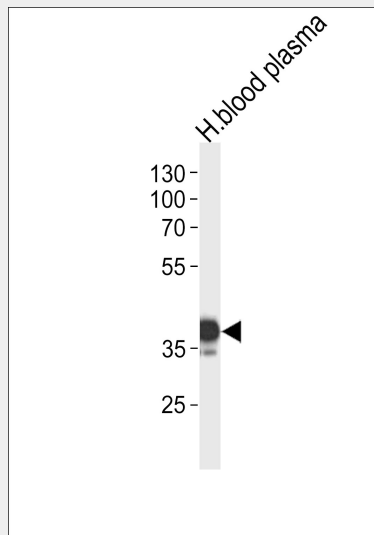
Tissue Location

Expressed by the liver and secreted in plasma.

SERPINA7 Antibody (N-term) - Protocols

Provided below are standard protocols that you may find useful for product applications.

- [Western Blot](#)
- [Blocking Peptides](#)
- [Dot Blot](#)
- [Immunohistochemistry](#)
- [Immunofluorescence](#)
- [Immunoprecipitation](#)
- [Flow Cytometry](#)
- [Cell Culture](#)

SERPINA7 Antibody (N-term) - Images

SERPINA7 Antibody (N-term) (Cat. #AP6714a) western blot analysis in human blood plasma tissue lysates (35ug/lane). This demonstrates the SERPINA7 antibody detected the SERPINA7 protein (arrow).

SERPINA7 Antibody (N-term) - Background

SERPINA7 is the major thyroid hormone transport protein in man (summarized by Mori et al., 1995 [PubMed 8530630]). Inherited abnormalities in the level of serum TBG have been classified as partial deficiency, complete deficiency, and excess. Patients are euthyroid.

SERPINA7 Antibody (N-term) - References

- Domingues, R., et al. *Endocrine* 36(1):83-86(2009)
Lacka, K., et al. *Thyroid* 17(11):1143-1146(2007)
Liu, T., et al. *J. Proteome Res.* 4(6):2070-2080(2005)
Ross, M.T., et al. *Nature* 434(7031):325-337(2005)

Anderson, N.L., et al. Mol. Cell Proteomics 3(4):311-326(2004)