

**KRT14 Antibody (Center)**  
**Purified Rabbit Polyclonal Antibody (Pab)**  
**Catalog # AP6713c**

**Specification**

---

**KRT14 Antibody (Center) - Product Information**

Application	WB, IHC-P, FC,E
Primary Accession	<a href="#">P02533</a>
Other Accession	<a href="#">Q6IFU7</a> , <a href="#">Q6IFX2</a> , <a href="#">Q6IFU8</a> , <a href="#">Q9OWL7</a> , <a href="#">Q04695</a> , <a href="#">A1L595</a> , <a href="#">Q6IFV1</a> , <a href="#">Q61781</a>
Reactivity	Human, Mouse
Predicted	Rat, Bovine
Host	Rabbit
Clonality	Polyclonal
Isotype	Rabbit IgG
Antigen Region	276-303

**KRT14 Antibody (Center) - Additional Information**

**Gene ID** 3861

**Other Names**

Keratin, type I cytoskeletal 14, Cytokeratin-14, CK-14, Keratin-14, K14, KRT14

**Target/Specificity**

This KRT14 antibody is generated from rabbits immunized with a KLH conjugated synthetic peptide between 276-303 amino acids from the Central region of human KRT14.

**Dilution**

WB~~1:2000  
IHC-P~~1:50~100  
FC~~1:10~50

**Format**

Purified polyclonal antibody supplied in PBS with 0.09% (W/V) sodium azide. This antibody is prepared by Saturated Ammonium Sulfate (SAS) precipitation followed by dialysis against PBS.

**Storage**

Maintain refrigerated at 2-8°C for up to 2 weeks. For long term storage store at -20°C in small aliquots to prevent freeze-thaw cycles.

**Precautions**

KRT14 Antibody (Center) is for research use only and not for use in diagnostic or therapeutic procedures.

**KRT14 Antibody (Center) - Protein Information**

**Name** KRT14

**Function** The nonhelical tail domain is involved in promoting KRT5- KRT14 filaments to self-organize into large bundles and enhances the mechanical properties involved in resilience of keratin intermediate filaments in vitro.

#### **Cellular Location**

Cytoplasm. Nucleus. Note=Expressed in both as a filamentous pattern.

#### **Tissue Location**

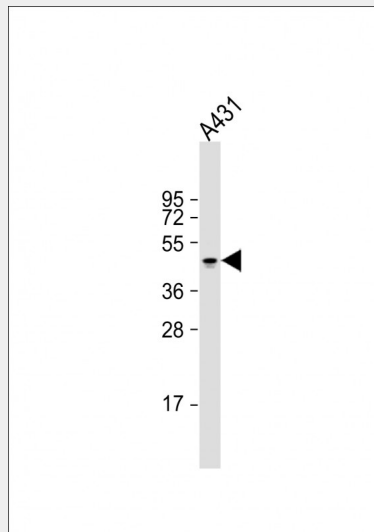
Expressed in the corneal epithelium (at protein level) (PubMed:26758872). Detected in the basal layer, lowered within the more apically located layers specifically in the stratum spinosum, stratum granulosum but is not detected in stratum corneum. Strongly expressed in the outer root sheath of anagen follicles but not in the germinative matrix, inner root sheath or hair (PubMed:9457912). Found in keratinocytes surrounding the club hair during telogen (PubMed:9457912).

### **KRT14 Antibody (Center) - Protocols**

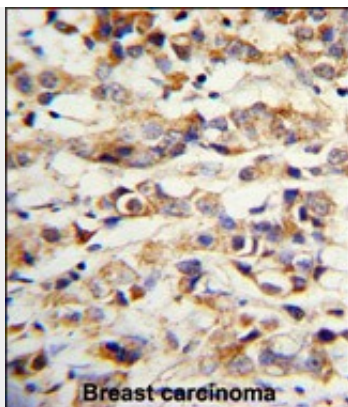
Provided below are standard protocols that you may find useful for product applications.

- [Western Blot](#)
- [Blocking Peptides](#)
- [Dot Blot](#)
- [Immunohistochemistry](#)
- [Immunofluorescence](#)
- [Immunoprecipitation](#)
- [Flow Cytometry](#)
- [Cell Culture](#)

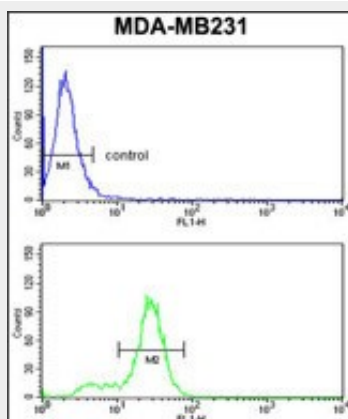
### **KRT14 Antibody (Center) - Images**



Anti-KRT14 Antibody (Center) at 1:2000 dilution + A431 whole cell lysate Lysates/proteins at 20 µg per lane. Secondary Goat Anti-Rabbit IgG, (H+L), Peroxidase conjugated at 1/10000 dilution. Predicted band size : 52 kDa Blocking/Dilution buffer: 5% NFD/MTBST.



Formalin-fixed and paraffin-embedded human breast carcinoma with KRT14 Antibody (Center), which was peroxidase-conjugated to the secondary antibody, followed by DAB staining. This data demonstrates the use of this antibody for immunohistochemistry; clinical relevance has not been evaluated.



KRT14 Antibody (Center) (Cat.#AP6713c) flow cytometry analysis of MDA-MB231 cells (bottom histogram) compared to a negative control cell (top histogram). FITC-conjugated goat-anti-rabbit secondary antibodies were used for the analysis.

#### **KRT14 Antibody (Center) - Background**

KRT14 is a member of the keratin family, the most diverse group of intermediate filaments. This protein, a type I keratin, is usually found as a heterotetramer with two keratin 5 molecules, a type II keratin. Together they form the cytoskeleton of epithelial cells.

#### **KRT14 Antibody (Center) - References**

Barcelos,A.C., J. Cutan. Pathol. 36 (6), 647-654 (2009) Romano,R.A., PLoS ONE 4 (5), E5623 (2009)