

Erbin (phospho Tyr1104) Polyclonal Antibody
Catalog # AP67031**Specification****Erbin (phospho Tyr1104) Polyclonal Antibody - Product Information**

Application	WB
Primary Accession	Q96RT1
Reactivity	Human
Host	Rabbit
Clonality	Polyclonal

Erbin (phospho Tyr1104) Polyclonal Antibody - Additional Information**Gene ID** 55914**Other Names**

ERBB2IP; ERBIN; KIAA1225; LAP2; Protein LAP2; Densin-180-like protein; ErbB2-interacting protein; Erbin

Dilution

WB~~Western Blot: 1/500 - 1/2000. ELISA: 1/10000. Not yet tested in other applications.

Format

Liquid in PBS containing 50% glycerol, 0.5% BSA and 0.09% (W/V) sodium azide.

Storage Conditions

-20°C

Erbin (phospho Tyr1104) Polyclonal Antibody - Protein Information**Name** ERBIN {ECO:0000303|PubMed:10878805}**Function**

Acts as an adapter for the receptor ERBB2, in epithelia. By binding the unphosphorylated 'Tyr-1248' of receptor ERBB2, it may contribute to stabilize this unphosphorylated state (PubMed:16203728). Inhibits NOD2-dependent NF-kappa-B signaling and pro-inflammatory cytokine secretion (PubMed:16203728).

Cellular Location

Cell junction, hemidesmosome. Nucleus membrane. Basolateral cell membrane. Note=Found in hemidesmosomes, which are cell-substrate adhesion complexes in stratified epithelia. In transfected cells, either diffusely distributed over the cytoplasm or concentrated at the basolateral membrane. Colocalizes with the adrenergic receptors, ADREN1A and ADREN1B, at the nuclear membrane of cardiac myocytes (By similarity).

Tissue Location

Highly expressed in brain, heart, kidney, muscle and stomach, followed by liver, spleen and

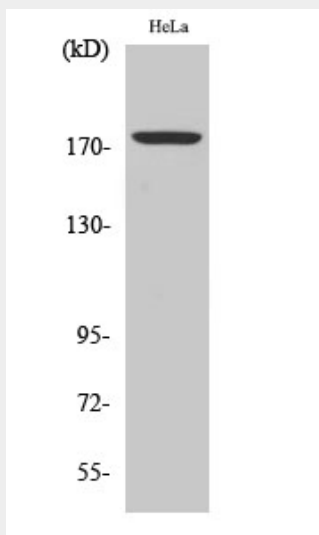
intestine

Erbin (phospho Tyr1104) Polyclonal Antibody - Protocols

Provided below are standard protocols that you may find useful for product applications.

- [Western Blot](#)
- [Blocking Peptides](#)
- [Dot Blot](#)
- [Immunohistochemistry](#)
- [Immunofluorescence](#)
- [Immunoprecipitation](#)
- [Flow Cytometry](#)
- [Cell Culture](#)

Erbin (phospho Tyr1104) Polyclonal Antibody - Images



Erbin (phospho Tyr1104) Polyclonal Antibody - Background

Acts as an adapter for the receptor ERBB2, in epithelia. By binding the unphosphorylated 'Tyr-1248' of receptor ERBB2, it may contribute to stabilize this unphosphorylated state (PubMed:16203728). Inhibits NOD2-dependent NF-kappa-B signaling and proinflammatory cytokine secretion (PubMed:16203728).