

Cyclin B1 (phospho Ser126) Polyclonal Antibody
Catalog # AP67011**Specification**

Cyclin B1 (phospho Ser126) Polyclonal Antibody - Product Information

Application	WB
Primary Accession	P14635
Reactivity	Human, Mouse, Rat
Host	Rabbit
Clonality	Polyclonal

Cyclin B1 (phospho Ser126) Polyclonal Antibody - Additional Information**Gene ID** 891**Other Names**

CCNB1; CCNB; G2/mitotic-specific cyclin-B1

Dilution

WB~~Western Blot: 1/500 - 1/2000. Immunohistochemistry: 1/100 - 1/300. ELISA: 1/5000. Not yet tested in other applications.

Format

Liquid in PBS containing 50% glycerol, 0.5% BSA and 0.09% (W/V) sodium azide.

Storage Conditions

-20°C

Cyclin B1 (phospho Ser126) Polyclonal Antibody - Protein Information**Name** CCNB1**Synonyms** CCNB**Function**

Essential for the control of the cell cycle at the G2/M (mitosis) transition.

Cellular Location

Cytoplasm. Nucleus. Cytoplasm, cytoskeleton, microtubule organizing center, centrosome

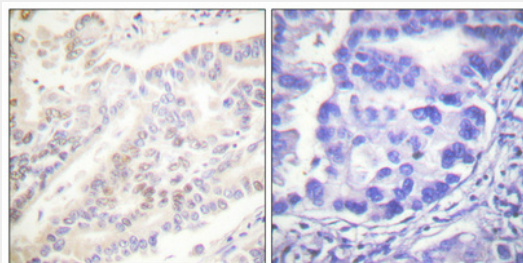
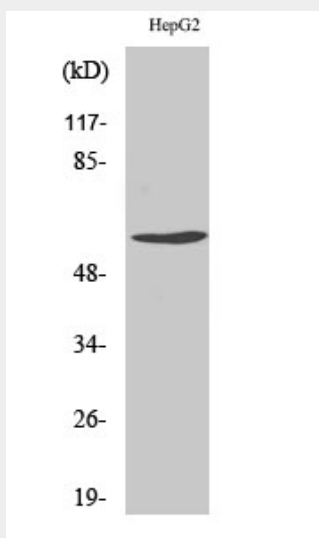
Cyclin B1 (phospho Ser126) Polyclonal Antibody - Protocols

Provided below are standard protocols that you may find useful for product applications.

- [Western Blot](#)
- [Blocking Peptides](#)

- [Dot Blot](#)
- [Immunohistochemistry](#)
- [Immunofluorescence](#)
- [Immunoprecipitation](#)
- [Flow Cytometry](#)
- [Cell Culture](#)

Cyclin B1 (phospho Ser126) Polyclonal Antibody - Images



Cyclin B1 (phospho Ser126) Polyclonal Antibody - Background

Essential for the control of the cell cycle at the G2/M (mitosis) transition.