

CREB-1 (phospho Ser133) Polyclonal Antibody
Catalog # AP67007**Specification****CREB-1 (phospho Ser133) Polyclonal Antibody - Product Information**

Application	IF
Primary Accession	P16220
Reactivity	Human, Mouse, Rat
Host	Rabbit
Clonality	Polyclonal

CREB-1 (phospho Ser133) Polyclonal Antibody - Additional Information**Gene ID** 1385**Other Names**

CREB1; Cyclic AMP-responsive element-binding protein 1; CREB-1; cAMP-responsive element-binding protein 1

Dilution

IF~IF: 1:50-200 Western Blot: 1/500 - 1/2000. Immunohistochemistry: 1/100 - 1/300. Immunoprecipitation: 2-5 ug/mg lysate. ELISA: 1/10000. Not yet tested in other applications.

Format

Liquid in PBS containing 50% glycerol, 0.5% BSA and 0.09% (W/V) sodium azide.

Storage Conditions

-20°C

CREB-1 (phospho Ser133) Polyclonal Antibody - Protein Information**Name** CREB1**Function**

Phosphorylation-dependent transcription factor that stimulates transcription upon binding to the DNA cAMP response element (CRE), a sequence present in many viral and cellular promoters (By similarity). Transcription activation is enhanced by the TORC coactivators which act independently of Ser-119 phosphorylation (PubMed:14536081). Involved in different cellular processes including the synchronization of circadian rhythmicity and the differentiation of adipose cells (By similarity). Regulates the expression of apoptotic and inflammatory response factors in cardiomyocytes in response to ERFE-mediated activation of AKT signaling (By similarity).

Cellular Location

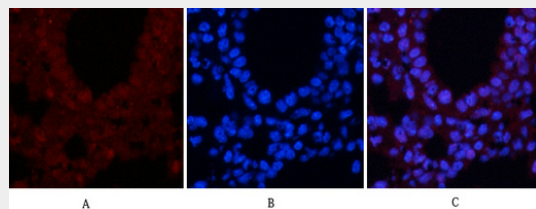
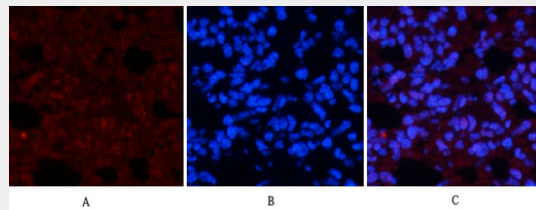
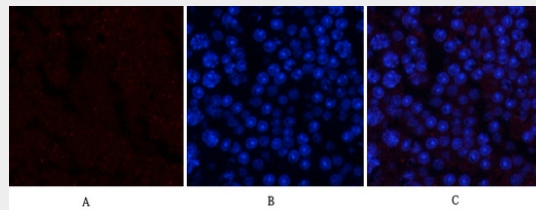
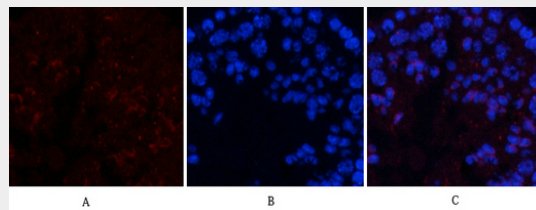
Nucleus {ECO:0000255|PROSITE-ProRule:PRU00312, ECO:0000255|PROSITE-ProRule:PRU00978, ECO:0000269|PubMed:12552083}

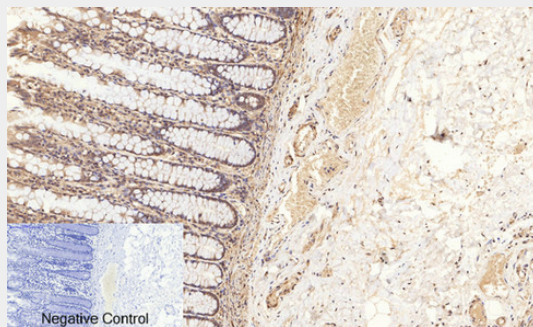
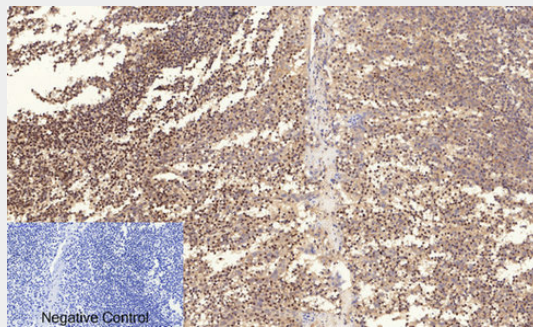
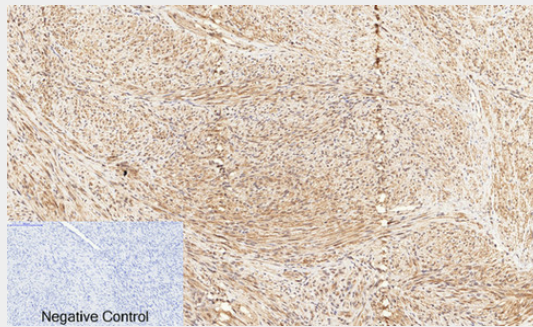
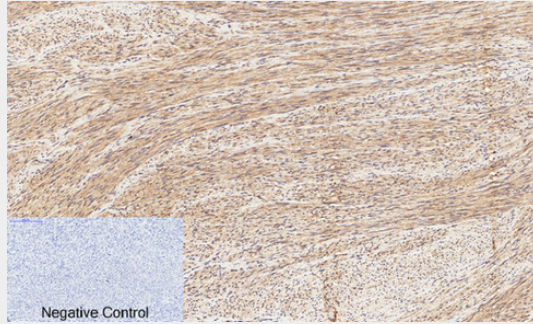
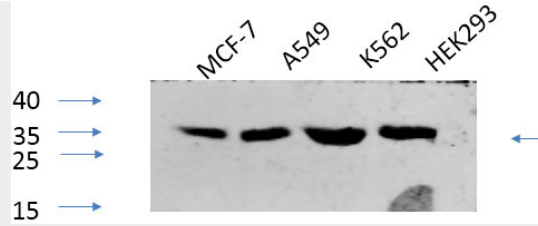
CREB-1 (phospho Ser133) Polyclonal Antibody - Protocols

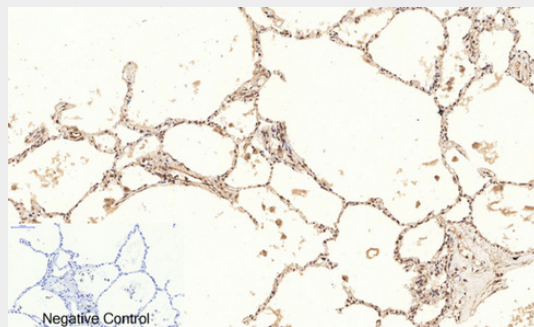
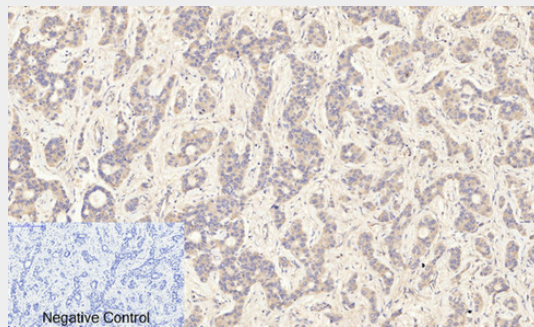
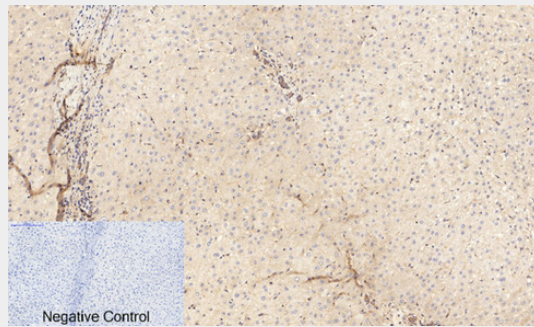
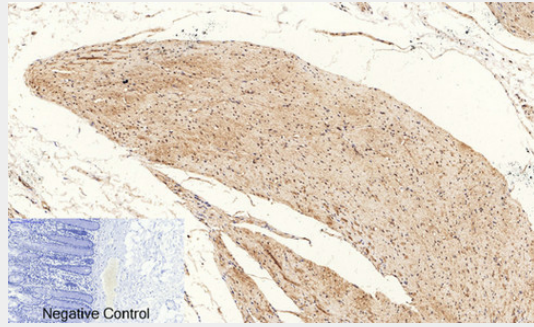
Provided below are standard protocols that you may find useful for product applications.

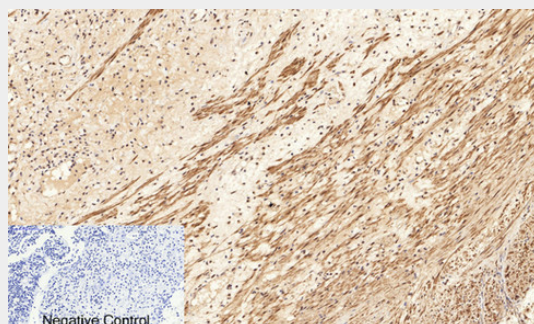
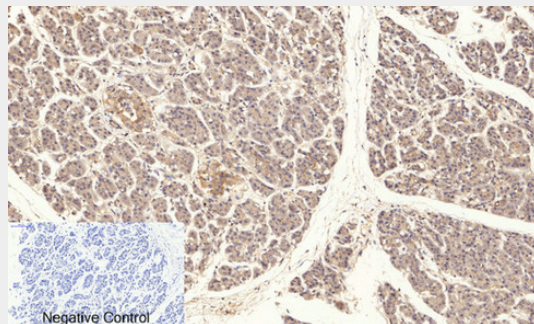
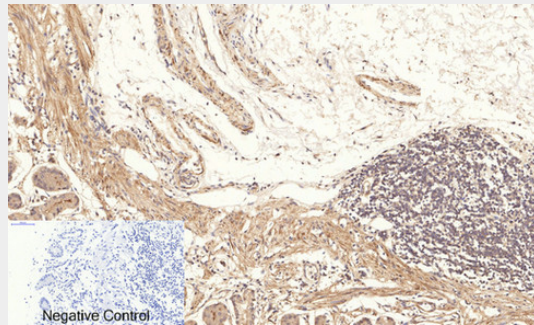
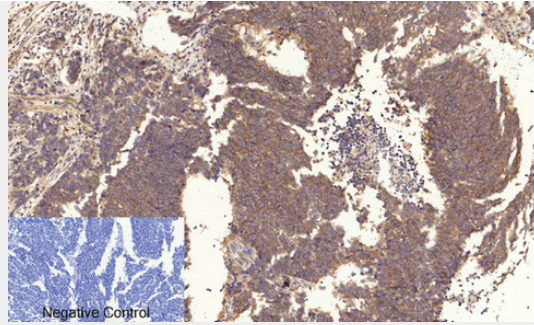
- [Western Blot](#)
- [Blocking Peptides](#)
- [Dot Blot](#)
- [Immunohistochemistry](#)
- [Immunofluorescence](#)
- [Immunoprecipitation](#)
- [Flow Cytometry](#)
- [Cell Culture](#)

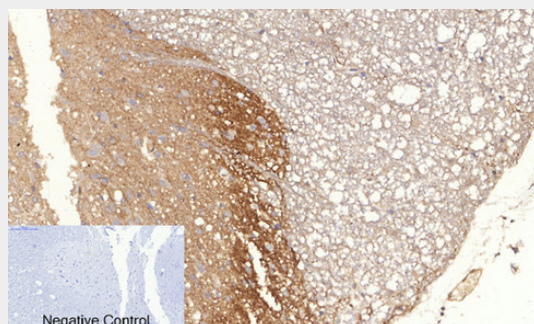
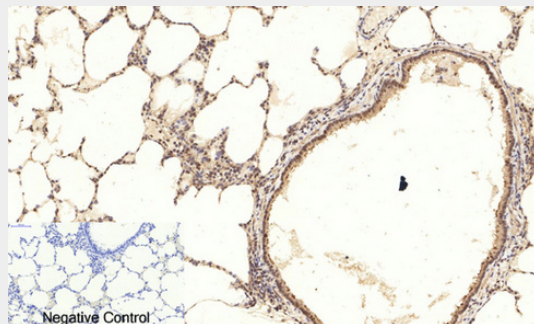
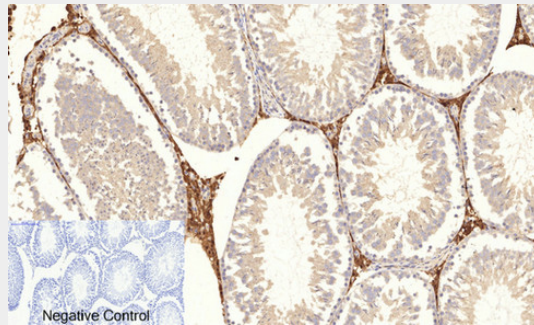
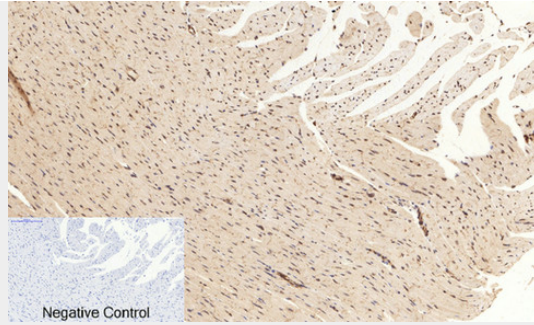
CREB-1 (phospho Ser133) Polyclonal Antibody - Images

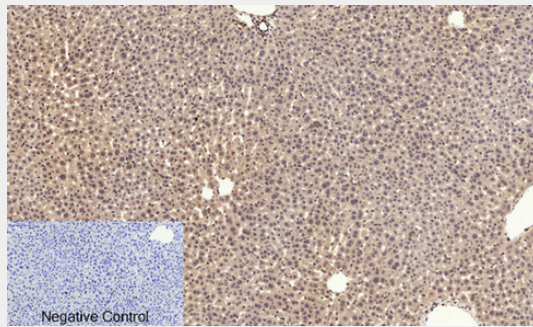
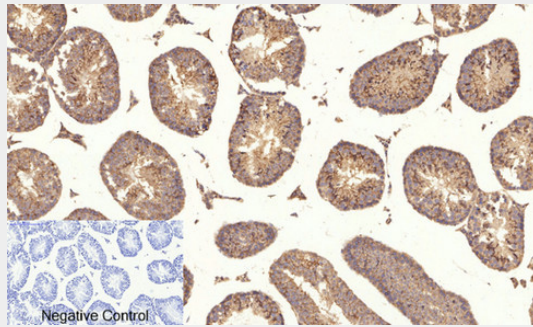
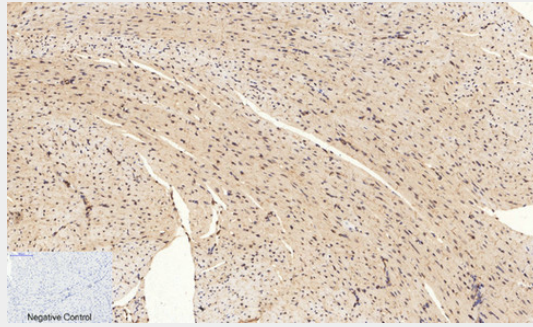
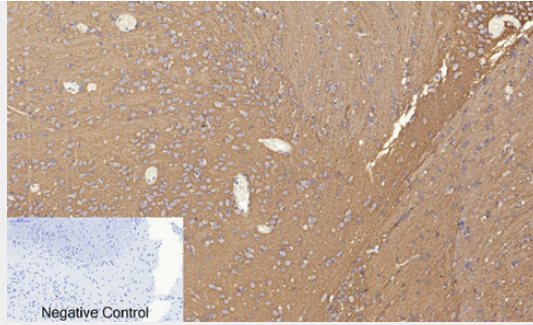


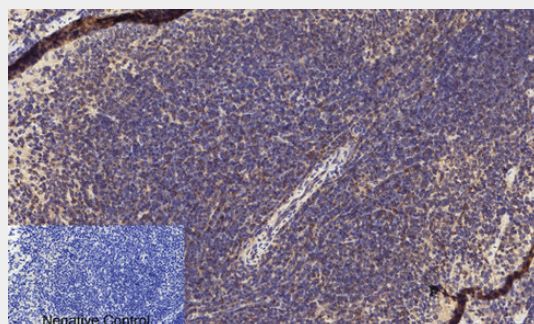
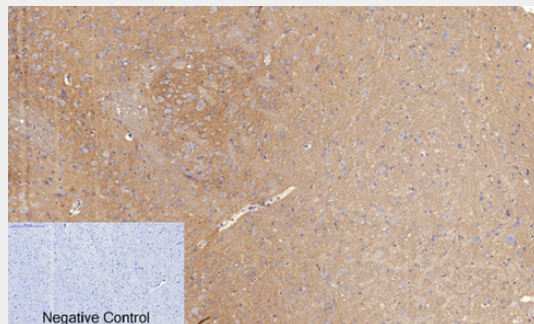
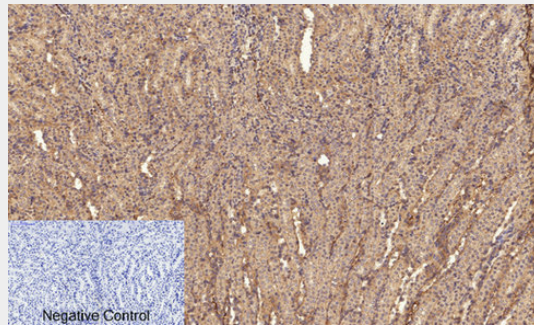
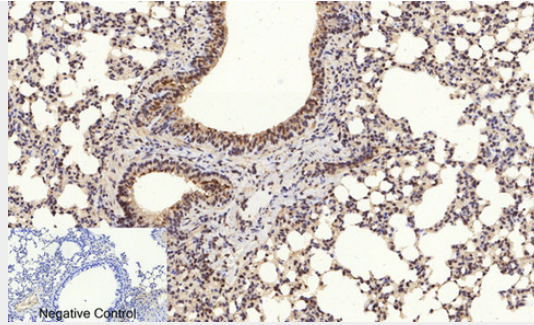


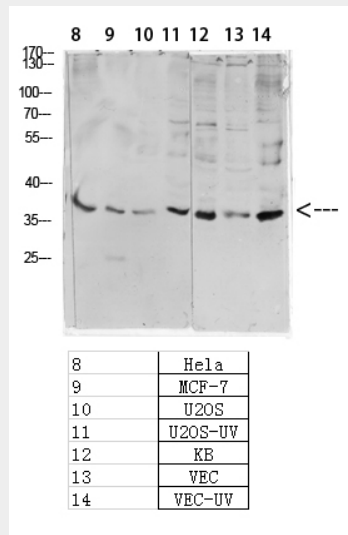
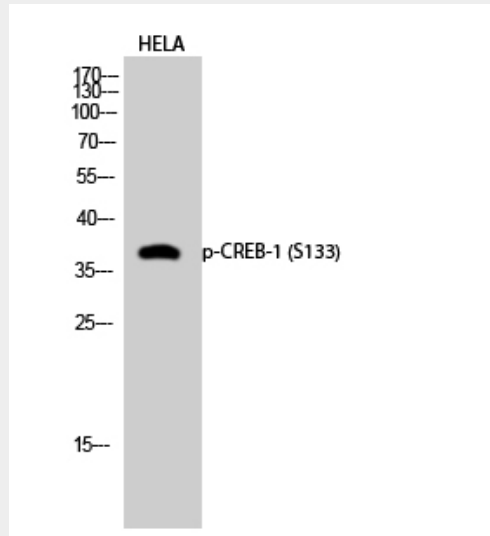
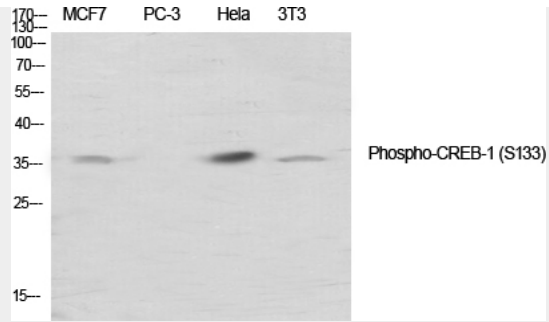


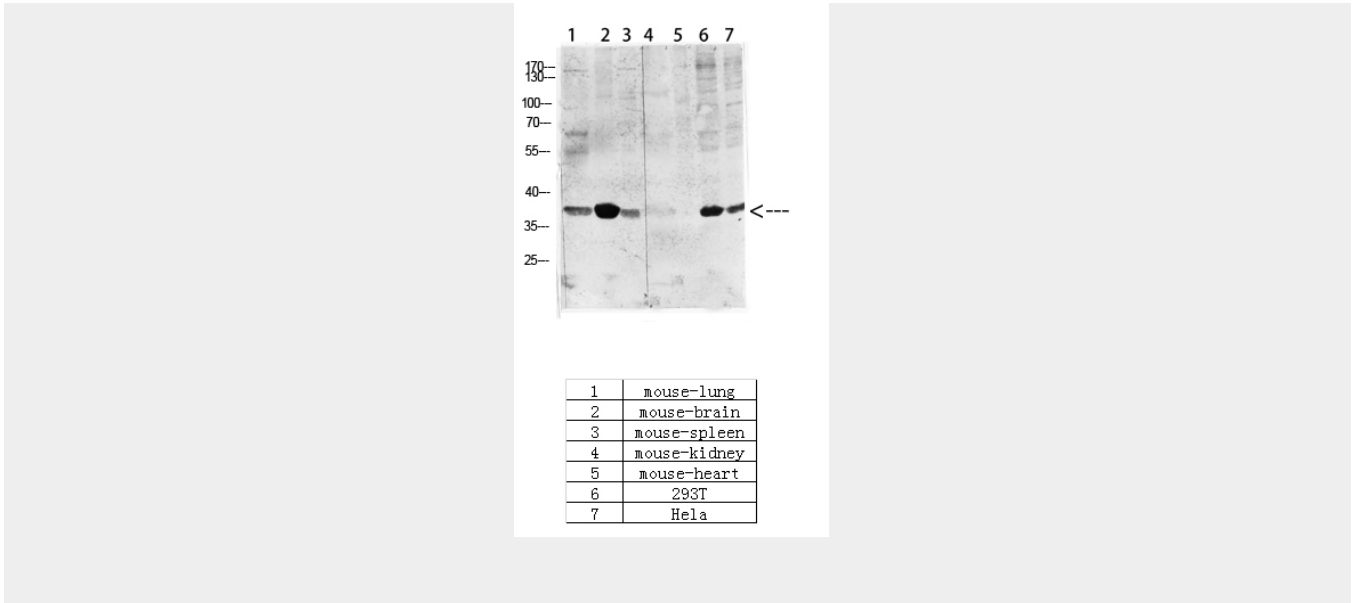












CREB-1 (phospho Ser133) Polyclonal Antibody - Background

Phosphorylation-dependent transcription factor that stimulates transcription upon binding to the DNA cAMP response element (CRE), a sequence present in many viral and cellular promoters. Transcription activation is enhanced by the TORC coactivators which act independently of Ser-133 phosphorylation. Involved in different cellular processes including the synchronization of circadian rhythmicity and the differentiation of adipose cells.